





## 3 The Rushes, Hadfield, Glossop, Derbyshire, SK13 2EU

**\*\* SEE OUR VIDEO TOUR \*\*** Standing at the head of a cul-de-sac, with a larger than average corner plot, a well maintained link-detached true bungalow, with an attached garage and offered for sale with No Onward Chain. Briefly the property, which has gas fired central heating and pvc double glazing, comprises an entrance hall, a 20ft living room with fireplace and leading through to the kitchen booth at the rear, two front bedrooms and a bathroom. Private gardens to three sides and driveway. Energy Rating D

# £335,000

### Viewing arrangements

Viewing strictly by appointment through the agent

44 High Street West, Glossop, Derbyshire, SK13 8BH 01457 858888

### Directions

From our office on High Street West proceed in a Westerly direction through the traffic lights, two roundabouts and along Dinting Vale. Continue through the next set of traffic lights and at the second turn right into Shaw Lane. Follow the road round, turn left into Green Lane, eventually left again into Higher Barn Road and then second right into The Rushes where the bungalow can be found on the left hand side.

### GROUND FLOOR

#### Entrance Hall

Pvc double glazed front door, alarm panel, access to the loft space, central heating radiator and doors leading off to:

#### Living Room

20'0 x 11'11 (max) 10'5 (min)

Pvc double glazed rear window, central heating radiator, stone fireplace with gas fire and door leading through to:

#### Kitchen

10'3 x 8'8 plus 7'7 x 3'10 (min)

Fitted Oak fronted kitchen units including base cupboards and drawers, plumbing for an automatic washing machine, work tops with an inset single drainer stainless steel sink with mixer tap, gas cooker point, Worcester gas fired combination boiler and radiator, pvc double glazed front and rear windows, pvc double glazed external rear door.

## Bedroom One

11'5 x 11'4

Pvc double glazed front window and central heating radiator.

## Bedroom Two

11'5 x 9'3

Pvc double glazed front window and central heating radiator.

## Bathroom

A coloured three piece suite including a panelled bath, close coupled wc and pedestal wash hand basin, central heating radiator, airing cupboard and pvc double glazed front window.

## OUTSIDE

### Attached Garage

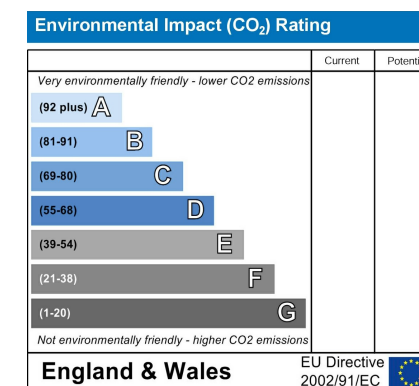
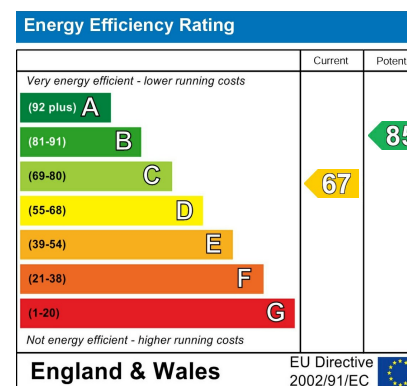
16'7 x 8'0

Up and over door, power and light, gas meter, pvc double glazed rear window and personnel door out to the rear garden.

## Gardens

The bungalow has a front garden and driveway, a side garden which leads round to the rear and all enjoying a good degree of privacy.

Our ref: Cms/cms/0820/24

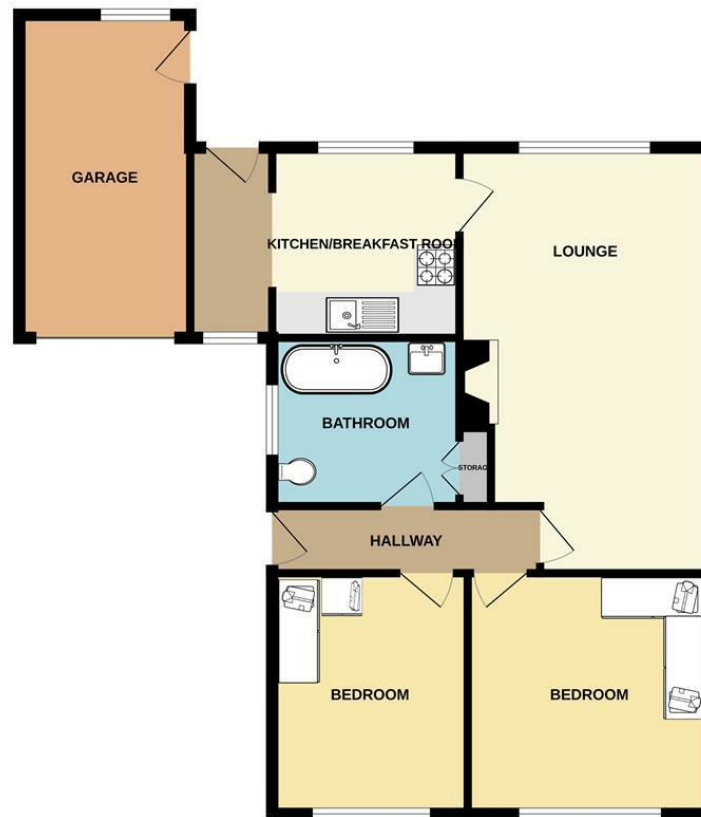








GROUND FLOOR



Whilst every attempt has been made to ensure the accuracy of the floorplan contained here, measurements of doors, windows, rooms and any other items are approximate and no responsibility is taken for any error, omission or mis-statement. This plan is for illustrative purposes only and should be used as such by any prospective purchaser. The services, systems and appliances shown have not been tested and no guarantee as to their operability or efficiency can be given.  
Made with Metropix ©2024



These particulars are believed to be accurate but they are not guaranteed and do not form a contract. Neither Jordan Fishwick nor the vendor or lessor accept any responsibility in respect of these particulars, which are not intended to be statements or representations of fact and any intending purchaser or lessee must satisfy himself by inspection or otherwise as to the correctness of each of the statements contained in these particulars. Any floorplans on this brochure are for illustrative purposes only and are not necessarily to scale.

Offices at: Chorlton, Didsbury, Disley, Hale, Glossop, Macclesfield, Manchester Deansgate, Manchester Whitworth Street, New Mills, Sale, Wilmslow and Withington

44 High Street West, Glossop, Derbyshire, SK13 8BH

01457 858888

[glossop@jordanfishwick.co.uk](mailto:glossop@jordanfishwick.co.uk)

[www.jordanfishwick.co.uk](http://www.jordanfishwick.co.uk)



