



*Jordan fishwick*

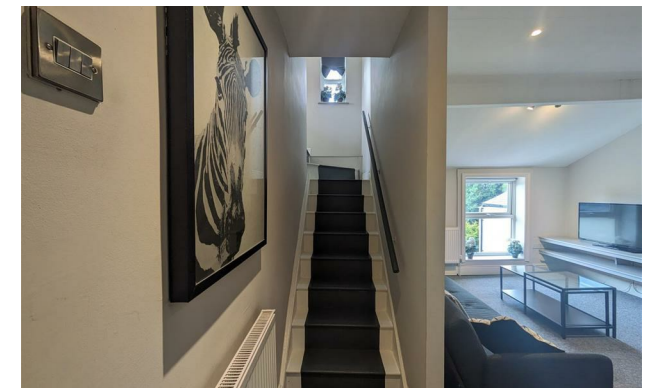
8 Oak Road, Didsbury, M20 3DA  
£1,100 Per Calendar Month





## Oak Road Manchester M20 3DA

£1,100 Per Calendar Month



### The Property

View our Virtual Tour Here - <https://youtu.be/b6WBMZ2-E1c?si=JqHj10gImKB7680d>


**\*\*\* AVAILABLE SEPTEMBER \*\*\*** A top floor duplex apartment with elevated views and forming part of an elegant Victorian conversion in a popular location on the borders of West Didsbury and Withington. Perfect for a single occupant or couple only. In outline:- Communal entrance hall and staircase to the second floor, private entrance hallway, lounge/dining room with stairs to the fitted kitchen, spacious bedroom and bathroom with modern three piece suite. In addition, there is ample residents off road parking. To view please call Didsbury on 0161 4345290

EPC Rating - D



- Available September
- One Double Bedroom
- Duplex Apartment
- Modern Kitchen & Bathroom
- Ideal for Single Occupant or Couple
- Popular Location of Withington & Didsbury
- Close to all Local Amenities
- Off Street Parking
- Council Tax Band A
- EPC Rating D



Energy Efficiency Rating		
	Current	Potential
Very energy efficient - lower running costs		
(92 plus) <b>A</b>		
(81-91) <b>B</b>		
(69-80) <b>C</b>		
(55-68) <b>D</b>	<b>59</b>	<b>60</b>
(39-54) <b>E</b>		
(21-38) <b>F</b>		
(1-20) <b>G</b>		
Not energy efficient - higher running costs		
<b>England &amp; Wales</b>	EU Directive 2002/91/EC 	





These particulars are believed to be accurate but they are not guaranteed and do not form a contract. Neither Jordan Fishwick nor the vendor or lessor accept any responsibility in respect of these particulars, which are not intended to be statements or representations of fact and any intending purchaser or lessee must satisfy himself by inspection or otherwise as to the correctness of each of the statements contained in these particulars. Any floorplans on this brochure are for illustrative purposes only and are not necessarily to scale.

Offices at: Offices at Chorlton, Didsbury, Disley, Hale, Glossop, Macclesfield, Manchester Deansgate, Manchester Whitworth Street, New Mills, Sale, Wilmslow and Withington