



jordan fishwick

WEST DIDSBURY
Georgia Avenue



Georgia Avenue, West Didsbury, M20 1LY

£190,000

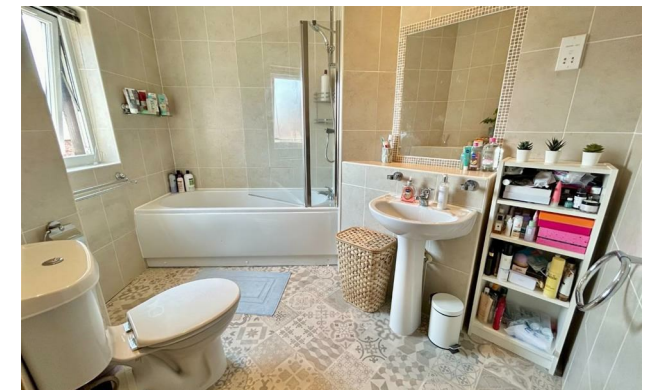


The Property

A stylish, one bedroom, second floor apartment forming part of a popular purpose built development with a great location in West Didsbury, which is just a 'short stroll' from the Metrolink and an array of cafés, bars and restaurants off Burton Road. (514 sq ft) The apartment is thoughtfully laid out with a hallway, large windows, spacious rooms and ample storage space, all of which are a rarity for modern build apartments! The accommodation in outline comprises:- Private entrance hall, open plan lounge and kitchen, one double bedroom with fitted wardrobes and a sizeable contemporary bathroom with recently fitted suite. In addition, there is uPVC double glazing and allocated parking.

Directions

M20 1LY



- Appealing second floor apartment
- 514 sq ft of stylish living space
- Close to Burton Road & The Metrolink
- Open plan living/kitchen area
- Impressive bathroom & recently fitted suite
- Generous hallway & storage space
- uPVC double glazing
- Allocated parking space

Postcode - M20 1LY

EPC Rating - C

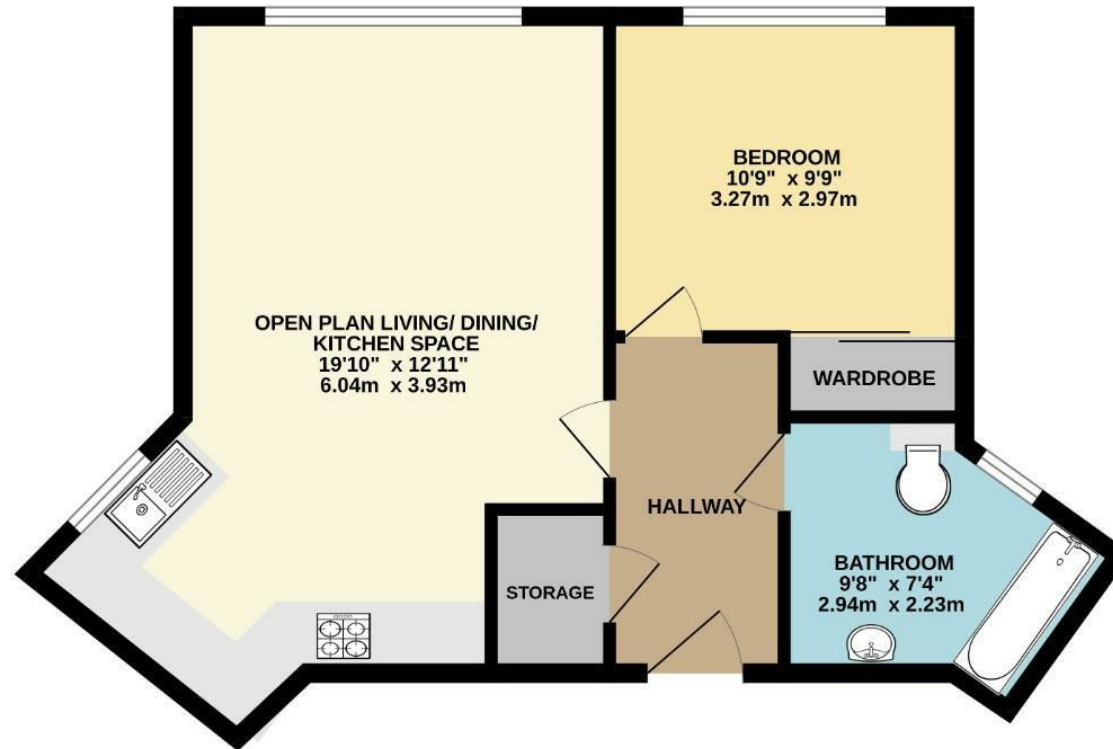
Floor Area - 514.00 sq ft

Local Authority - Manchester City Council

Council Tax - C



514 sq.ft. (47.7 sq.m.) approx.



TOTAL FLOOR AREA: 514 sq.ft. (47.7 sq.m.) approx.
Measurements are approximate. Not to scale. Illustrative purposes only.
Made with Metropix ©2024



These particulars are believed to be accurate but they are not guaranteed and do not form a contract. Neither Jordan Fishwick nor the vendor or lessor accept any responsibility in respect of these particulars, which are not intended to be statements or representations of fact and any intending purchaser or lessee must satisfy himself by inspection or otherwise as to the correctness of each of the statements contained in these particulars. Any floorplans on this brochure are for illustrative purposes only and are not necessarily to scale.

Offices also at: Wilmslow, Macclesfield, Hale, Sale, Chorlton, Glossop, Manchester & Salford

757-759 Wilmslow Road, Didsbury Village, Manchester

0161 445 4480

didsbury@jordanfishwick.co.uk
www.jordanfishwick.co.uk