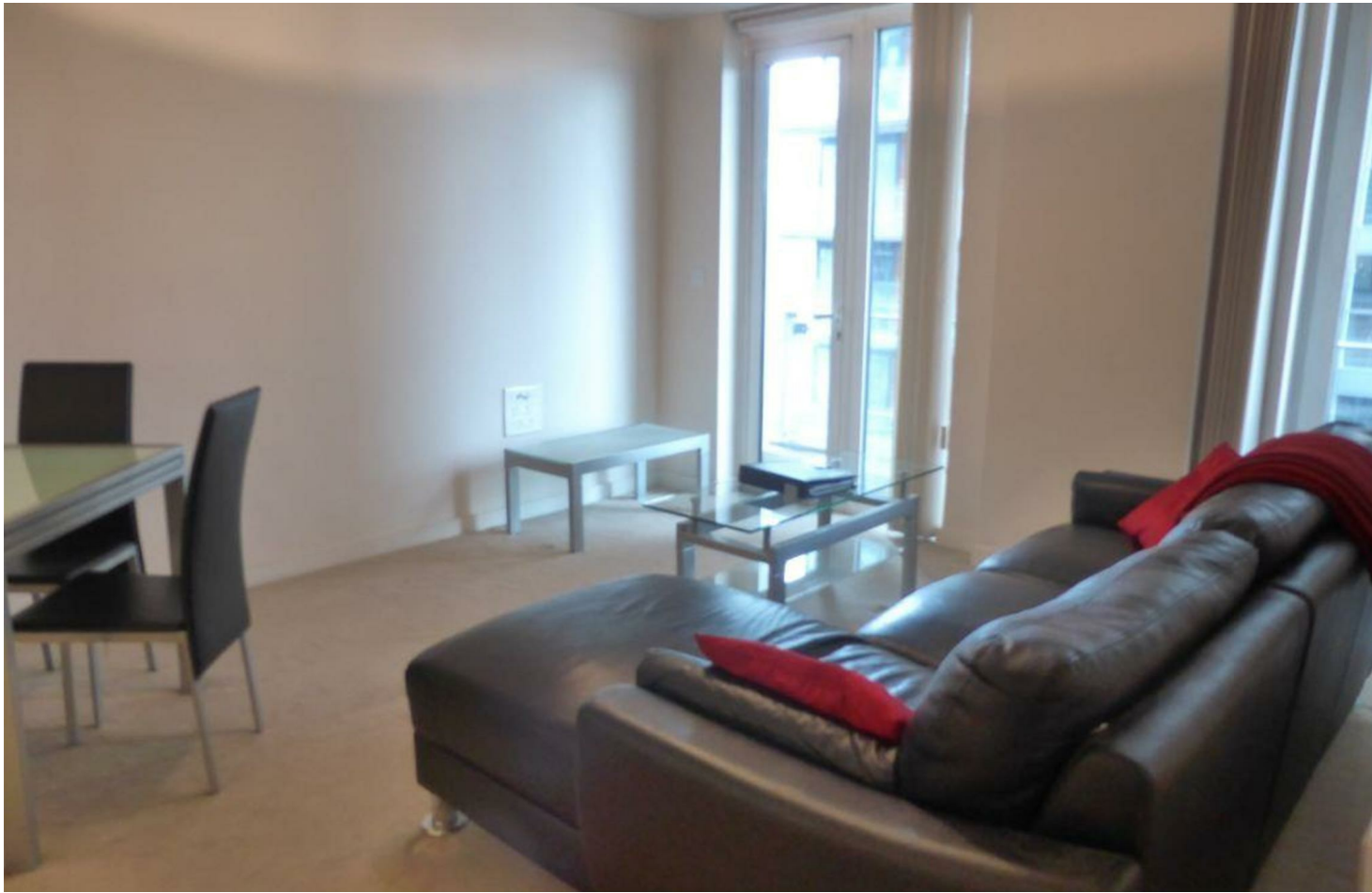




Jordan fishwick

Apt 238 Spectrum, Block 5, M3 7BT
£1,300 Per Calendar Month



Spectrum Blackfriars Road M3 7BT

£1,300 Per Calendar Month




The Property

Available Mid September. Spectrum is a well kept and maintained building just a stones throw from Deansgate and Spiningfields. Comprising of two double bedrooms, master with en-suite and an open plan living area with a good sized decked balcony overlooking the communal gardens. The apartment has a well equipped kitchen with gloss cupboards, integrated dishwasher, fridge and freezer and a washer dryer to the large storage cupboard. There is also a secure parking space and the property is furnished throughout. Council Tax Band D. £35 Water Consumption Charges. EPC Rating B.

VIDEO/ PHOTO OFFERS NOT ACCEPTED - PLEASE CALL TO BOOK A VIEWING

- Available Mid September
- Two Double Bedrooms
- 24 Hour Concierge
- Tax Band D
- EPC Rating B
- Allocated Parking
- Close to City Centre
- 4th Floor Apartment
- Extensive Balcony



Energy Efficiency Rating		
	Current	Potential
Very energy efficient - lower running costs		
(92 plus) A		
(81-91) B	81	86
(69-80) C		
(55-68) D		
(39-54) E		
(21-38) F		
(1-20) G		
Not energy efficient - higher running costs		
England & Wales	EU Directive 2002/91/EC 	





These particulars are believed to be accurate but they are not guaranteed and do not form a contract. Neither Jordan Fishwick nor the vendor or lessor accept any responsibility in respect of these particulars, which are not intended to be statements or representations of fact and any intending purchaser or lessee must satisfy himself by inspection or otherwise as to the correctness of each of the statements contained in these particulars. Any floorplans on this brochure are for illustrative purposes only and are not necessarily to scale.

Offices at: Offices at Chorlton, Didsbury, Disley, Hale, Glossop, Macclesfield, Manchester Deansgate, Manchester Whitworth Street, New Mills, Sale, Wilmslow and Withington