



Jordan fishwick

13 Marlborough Avenue, M16 0AJ
£995



Marlborough Avenue Whalley range M16 0AJ


£995



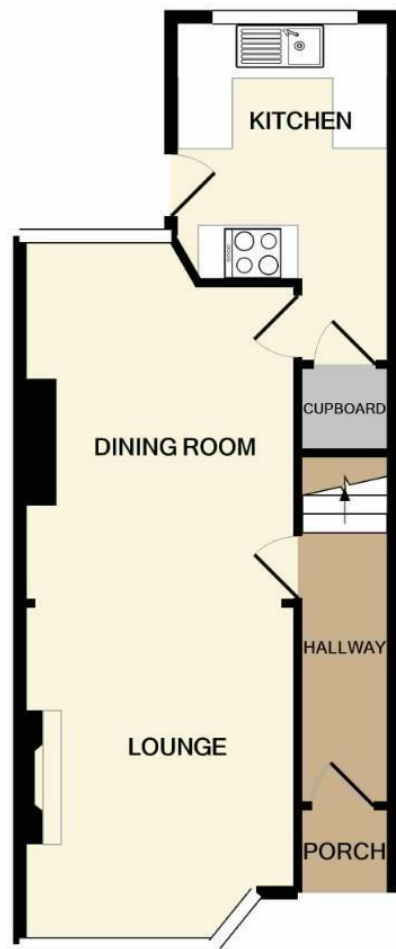
The Property

****AVAILABLE NOW****A well presented mid-terraced property located on a popular road, well placed for local amenities, the Metro and Chorlton village. Ideal for a couple or sharers , the accommodation comprises briefly: covered porch, entrance hall, lounge, dining room, fitted kitchen. To the first floor there are two double bedrooms, a study room and a bathroom with over bath shower. Gas central heating are installed. An enclosed rear court yard garden completes the specification. Viewing of this fine home is highly recommended. Unfurnished .Call 0161 393 7539.



Energy Efficiency Rating		
	Current	Potential
Very energy efficient - lower running costs		
(92 plus) A		89
(81-91) B		
(69-80) C		
(55-68) D	57	
(39-54) E		
(21-38) F		
(1-20) G		
Not energy efficient - higher running costs		
England & Wales	EU Directive 2002/91/EC 	





GROUND FLOOR



1ST FLOOR

Measurements are approximate. Not to scale. Illustrative purposes only
 Made with Metropix ©2021



These particulars are believed to be accurate but they are not guaranteed and do not form a contract. Neither Jordan Fishwick nor the vendor or lessor accept any responsibility in respect of these particulars, which are not intended to be statements or representations of fact and any intending purchaser or lessee must satisfy himself by inspection or otherwise as to the correctness of each of the statements contained in these particulars. Any floorplans on this brochure are for illustrative purposes only and are not necessarily to scale.

Offices at: Offices at Chorlton, Didsbury, Disley, Hale, Glossop, Macclesfield, Manchester Deansgate, Manchester Whitworth Street, New Mills, Sale, Wilmslow and Withington