



FOR SALE
jordan fishwick
01663 767878
www.jordanfishwick.co.uk

jordan fishwick

High Lea Road New Mills High Peak



High Lea Road New Mills High Peak SK22 3DP

£258,500



The Property

Nestled in the sought-after High Lea Road of New Mills, High Peak, this charming terraced house offers a delightful living experience. Boasting two good-sized bedrooms and a study area on the first-floor landing, this property is perfect for those seeking a cosy yet spacious home.

The house overlooks the picturesque High Lea Park, providing a serene and peaceful atmosphere. The walled frontage adds character to the property, while the lovely private rear garden, complete with a stone storage shed, offers a tranquil outdoor space to unwind or entertain guests.

Inside, the living room exudes warmth and comfort, creating an inviting space to relax after a long day. The large bright breakfast kitchen is a highlight, featuring integrated appliances that make cooking a joy. Additionally, the modern shower room adds a touch of luxury to this already impressive home.

With its convenient location and array of desirable features, this property on High Lea Road is a rare find that combines comfort, style, and practicality. Don't miss the opportunity to make this house your home in the heart of High Peak.



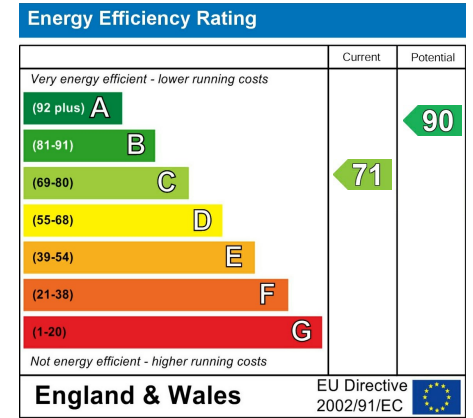
- Popular and Convenient Location Overlooking High Lea Park
- Well Presented Accommodation
- Lovely Large Breakfast Kitchen with Ample Storage and Breakfast Bar
- Two Good Sized Bedrooms
- Modern Shower Room
- Study Area on First Floor Landing
- Beautiful Private Rear Garden and Walled Frontage

Postcode SK22 3DP

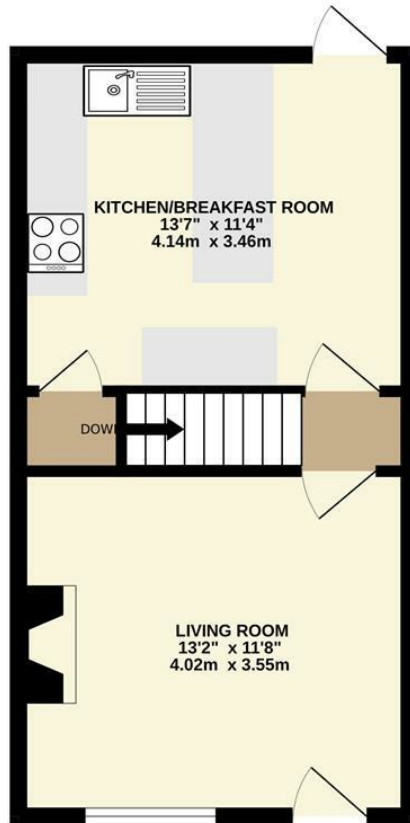
EPC Rating C

Local Authority High Peak

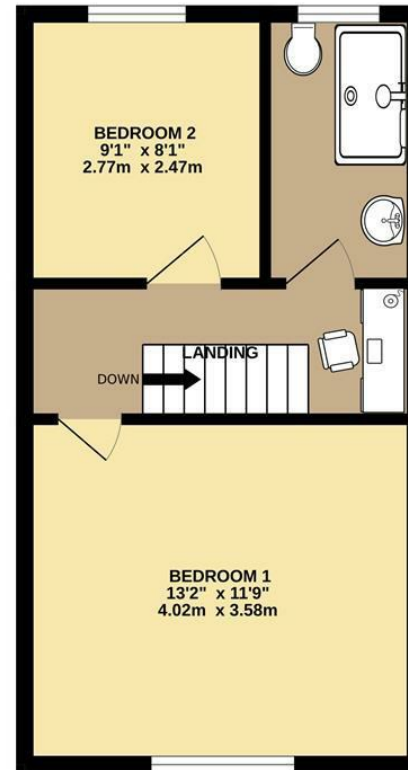
Council Tax B



GROUND FLOOR
332 sq.ft. (30.8 sq.m.) approx.



1ST FLOOR
334 sq.ft. (31.0 sq.m.) approx.



TOTAL FLOOR AREA: 666 sq.ft. (61.9 sq.m.) approx.

Whilst every attempt has been made to ensure the accuracy of the floorplan contained here, measurements of doors, windows, rooms and any other items are approximate and no responsibility is taken for any error, omission or mis-statement. This plan is for illustrative purposes only and should be used as such by any prospective purchaser. The services, systems and appliances shown have not been tested and no guarantee as to their operability or efficiency can be given.
Made with Metropix ©2024



These particulars are believed to be accurate but they are not guaranteed and do not form a contract. Neither Jordan Fishwick nor the vendor or lessor accept any responsibility in respect of these particulars, which are not intended to be statements or representations of fact and any intending purchaser or lessee must satisfy himself by inspection or otherwise as to the correctness of each of the statements contained in these particulars. Any floorplans on this brochure are for illustrative purposes only and are not necessarily to scale.

Offices at: Chorlton, Didsbury, Disley, Hale, Glossop, Macclesfield, Manchester Deansgate, Manchester Whitworth Street, New Mills, Sale, Wilmslow and Withington

2 Union Road, New Mills, High Peak, Derbyshire, SK22 3ES

01663 767878

newmills@jordanfishwick.co.uk

www.jordanfishwick.co.uk