



Jordan fishwick

6 Reeves Road, M21 8BT
£1,850 Per Calendar Month



Reeves Road Chorlton M21 8BT

£1,850 Per Calendar Month




The Property

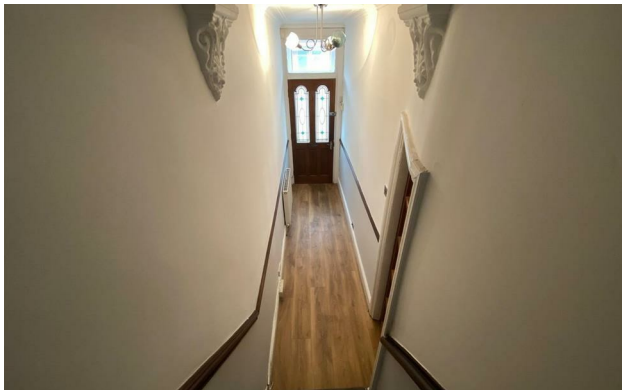
*** AVAILABLE SEPTEMBER *** A spacious and beautifully presented three double bed roomed house with study situated in the popular Beech Road area and conveniently positioned for Chorlton village and the Metrolink. The accommodation is ideal for a professional couple or growing family and briefly comprises: entrance hall, lounge, dining room, good sized dining kitchen, three double bedrooms, further single bedroom/study and a stylish bathroom. Outside there is a walled garden to the front of the property and an enclosed courtyard garden with storage shed to the rear. Unfurnished. Not available to sharers.

***** To arrange a viewing please call 0161 393 7539 *****

- Council tax band C - EPC D
- Loft Conversion
- 3 Double Bedroom & Study
- Chorlton Green & Beech road location
- 2 Reception Rooms
- Stylish Bathroom
- Available September



Energy Efficiency Rating		
	Current	Potential
Very energy efficient - lower running costs		
(92 plus) A		
(81-91) B		82
(69-80) C		
(55-68) D	58	
(39-54) E		
(21-38) F		
(1-20) G		
Not energy efficient - higher running costs		
England & Wales	EU Directive 2002/91/EC 	



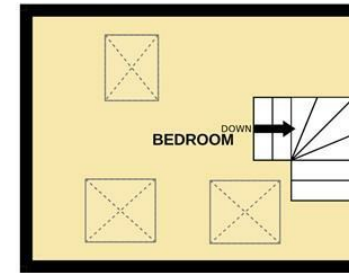
GROUND FLOOR
530 sq.ft. (49.2 sq.m.) approx.



1ST FLOOR
495 sq.ft. (46.0 sq.m.) approx.



2ND FLOOR
189 sq.ft. (17.5 sq.m.) approx.



TOTAL FLOOR AREA : 1214 sq.ft. (112.8 sq.m.) approx.

Whilst every attempt has been made to ensure the accuracy of the floorplan contained here, measurements of doors, windows, rooms and any other items are approximate and no responsibility is taken for any error, omission or mis-statement. This plan is for illustrative purposes only and should be used as such by any prospective purchaser. The services, systems and appliances shown have not been tested and no guarantee as to their operability or efficiency can be given.
Made with Metropix ©2024