



*jordan fishwick*

6 Arderne Place, Alderley Edge, SK9 7EN  
Guide Price £1,250 PCM





**FURNISHED AVAILABLE MID SEPTEMBER**

Immaculate two bedroom second floor apartment on this quiet development but centrally located for Alderley village.

Beautifully presented accommodation ideal for the professional person/couple, with gas fired heating, double glazing, curtains and blinds.

Comprises: communal hall with entry phone system, main hall, large L shaped lounge/dining room, open to fitted kitchen with gas hob, oven, washer / dryer and fridge / freezer and dishwasher, main double sized bedroom, with built in wardrobes and shower room en suite, Second single sized bedroom/study, main bathroom/wc. Allocated Parking.

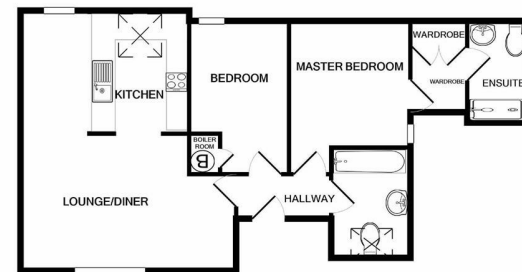
Contact Wilmslow office 01625 536300 £1250.00pcm

COUNCIL TAX D

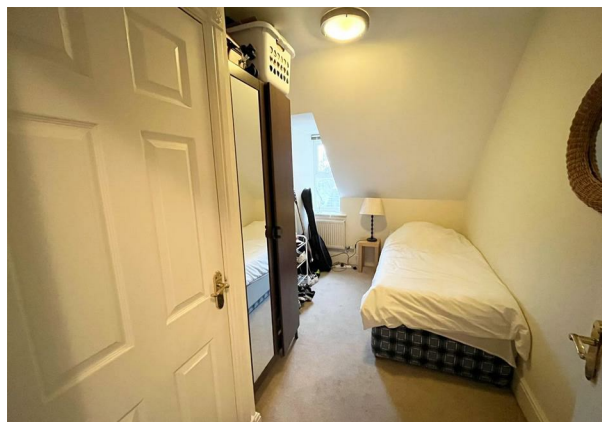
EPC C



Energy Efficiency Rating			Environmental Impact (CO <sub>2</sub> ) Rating		
Very energy efficient - lower running costs	Current	Potential	Very environmentally friendly - lower CO <sub>2</sub> emissions	Current	Potential
(92 plus) <b>A</b>			(92 plus) <b>A</b>		
(81-91) <b>B</b>			(81-91) <b>B</b>		
(69-80) <b>C</b>			(69-80) <b>C</b>		
(55-68) <b>D</b>			(55-68) <b>D</b>		
(39-54) <b>E</b>			(39-54) <b>E</b>		
(21-38) <b>F</b>			(21-38) <b>F</b>		
(1-20) <b>G</b>			(1-20) <b>G</b>		
Not energy efficient - higher running costs			Not environmentally friendly - higher CO <sub>2</sub> emissions		
<b>England &amp; Wales</b>		EU Directive 2002/91/EC	<b>England &amp; Wales</b>		EU Directive 2002/91/EC



Measurements are approximate. Not to scale. Illustrative purposes only. Made with Metropro ©2021



These particulars are believed to be accurate but they are not guaranteed and do not form a contract. Neither Jordan Fishwick nor the vendor or lessor accept any responsibility in respect of these particulars, which are not intended to be statements or representations of fact and any intending purchaser or lessee must satisfy himself by inspection or otherwise as to the correctness of each of the statements contained in these particulars. Any floorplans on this brochure are for illustrative purposes only and are not necessarily to scale.

Offices at: Chorlton, Didsbury, Disley, Hale, Glossop, Macclesfield, Manchester Deansgate, Manchester Whitworth Street, New Mills, Sale, Wilmslow and Withington

**01625 536300**

wilmslow@jordanfishwick.co.uk

www.jordanfishwick.co.uk