



*Jordan fishwick*

WILMSLOW  
Dean Drive



# Dean Drive, Wilmslow, SK9 2EX

£1,950 PCM



## The Property

AVAILABLE LATE SEPTEMBER - PART FURNISHED - VIEWING ESSENTIAL

Located to the North of Wilmslow town centre on this highly popular road is this three bedroom detached property. Within easy reach of the A34, Manchester International Airport and the motorway networks, Wilmslow and Alderley Edge are also only a short drive away.

With gardens front and rear along with great living space for the growing family this super property is sure to be a popular choice.

Currently undergoing a comprehensive programme of refurbishments to include new boiler, full redecoration, new bathrooms and kitchen this property will be available for viewings from Mid August.

Entrance hall with storage leading to lounge area with newly fitted feature gas fire place and doors through to the second large reception room with patio doors to the good sized rear garden, newly fitted dining kitchen with appliances, newly fitted downstairs WC and shower room.

To the first floor two double bedrooms, third good sized single bedroom, newly fitted bathroom with shower over bath.

Off road parking to the front and a good sized rear garden with patio area

Contact Wilmslow 01625 536300 £1950.00pcm

COUNCIL TAX E

EPC D

## Directions

SK9 2EX



Postcode - SK9 2EX

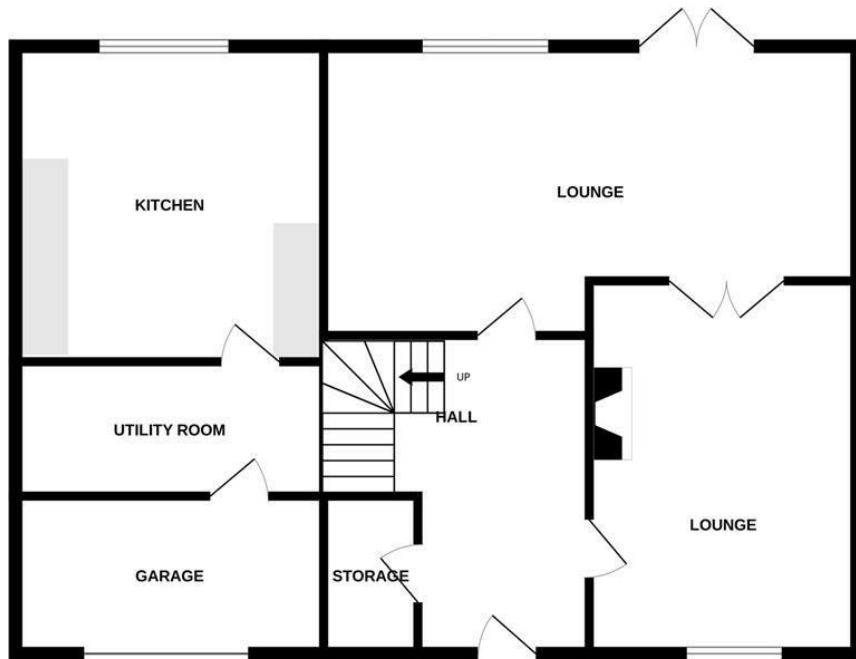
EPC Rating - D

Floor Area - sq ft

Local Authority - Cheshire East

Council Tax - E

GROUND FLOOR



1ST FLOOR



Measurements are approximate. Not to scale. Illustrative purposes only  
Made with Metropix ©2024



These particulars are believed to be accurate but they are not guaranteed and do not form a contract. Neither Jordan Fishwick nor the vendor or lessor accept any responsibility in respect of these particulars, which are not intended to be statements or representations of fact and any intending purchaser or lessee must satisfy himself by inspection or otherwise as to the correctness of each of the statements contained in these particulars. Any floorplans on this brochure are for illustrative purposes only and are not necessarily to scale.

Offices at: Chorlton, Didsbury, Disley, Hale, Glossop, Macclesfield, Manchester Deansgate, Manchester Whitworth Street, New Mills, Sale, Wilmslow and Withington

01625 536300

wilmslow@jordanfishwick.co.uk  
www.jordanfishwick.co.uk