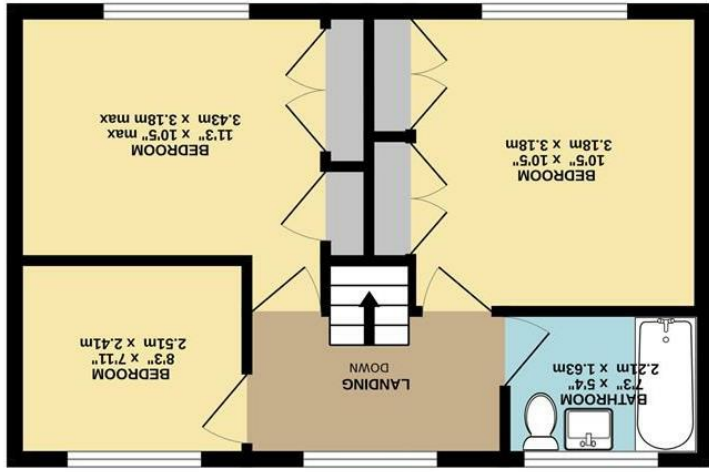
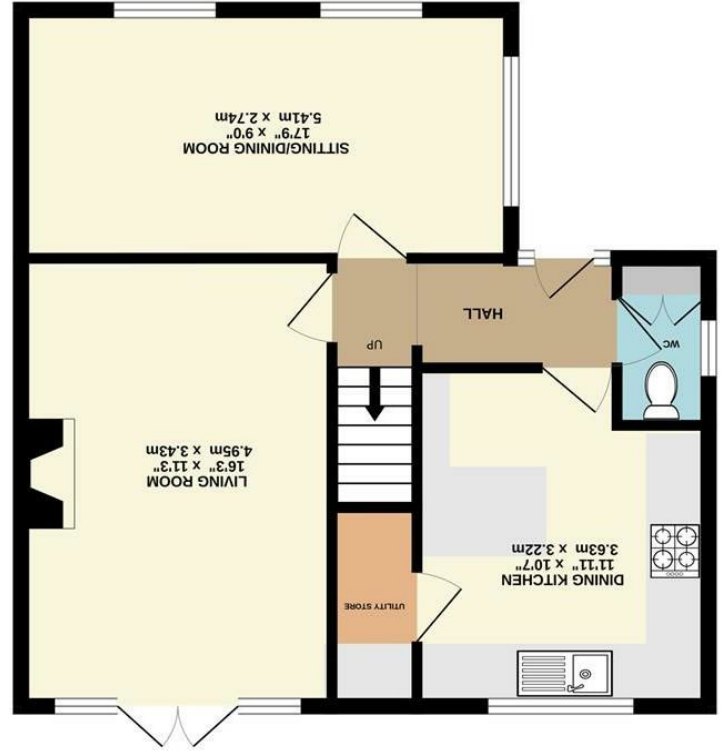


These particulars are believed to be accurate but they are not guaranteed and do not form a contract. Neither Jordan Fishwick nor the vendor or lessor accept any responsibility in respect of these particulars, which are not intended to be statements or representations of fact and any intending purchaser or lessee must satisfy himself by inspection or otherwise as to the correctness of each of the statements contained in these particulars. Any floorplans on this brochure are for illustrative purposes only and are not necessarily to scale.

Whilst every attempt has been made to ensure the accuracy of the floorplan contained here, measurements of doors, windows, rooms and other items are approximate and no responsibility is taken for any error, omission or mis-statement. This plan is for illustrative purposes only and should be used as such by any prospective purchaser. The services, systems and appliances shown have not been tested and no guarantee as to their operability or efficiency can be given.
Made with Metropix ©2024



1ST FLOOR



GROUND FLOOR



33 Godward Road, New Mills,
High Peak, SK22 3BU

£425,000



The Property

Standing in a popular, sought-after location and commanding fine rear views over New Mills, a superbly presented three bedroom detached family home. Updated and improved in recent years, this stunning property has to be seen. Generous, well maintained private gardens with a raised deck, and comprising: entrance hall, wc, re-fitted dining kitchen, utility/store, 17ft sitting/dining room, 16ft living room, three first floor bedrooms and a bathroom with a white contemporary suite. Pvc double glazing, gas central heating and block paved driveway. Viewing recommended.



- Stunning Family Home
- Sought After Location
- Three Bedrooms
- Superb Views Over New Mills
- Generous Enclosed Garden With Deck
- Block Paved Driveway
- 17FT Sitting Room Plus 16FT Living Room
- Re-Fitted Kitchen and Bathroom
- Pvc Double Glazing and Gas Central Heating
- Viewing Essential

Postcode - SK22 3BU
EPC Rating - D
Local Authority - High Peak
Council Tax - D

