



jordan fishwick

Carlton Place Hazel Grove Stockport

Carlton Place Hazel Grove Stockport SK7 6AG

£205,000



The Property

Part of a small, modern, popular development, conveniently located for all of Hazel Groves amenities, a stunning TWO DOUBLE BEDROOM first floor flat. In superb condition and offered for sale with No Chain, this delightful property would suit many types of buyers. Comprising: private first floor entrance hall with storage cupboards, 16ft living room with Juliet Balcony, re-fitted dining kitchen, two generous bedrooms and a re-fitted bathroom with separate shower. Pvc double glazing and gas central heating installed in the last few years, together with Allocated Parking. Viewing highly recommended.



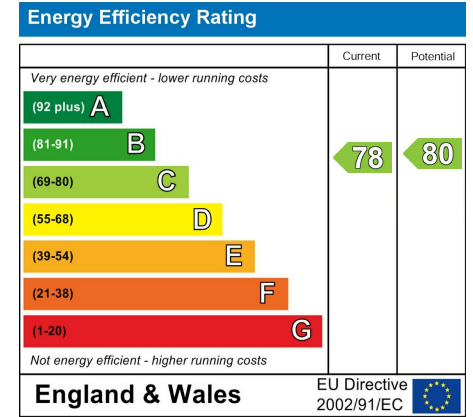
- Stunning First Floor Flat
- Two Double Bedrooms
- Immaculately Presented
- Juliet Balcony
- Allocated Parking
- Convenient Location
- Popular Modern Development
- Delightful Kitchen and Bathroom
- No Chain
- Installed in Recent Years - Pvc Double Glazing and Gas Central Heating

Postcode SK7 6AG

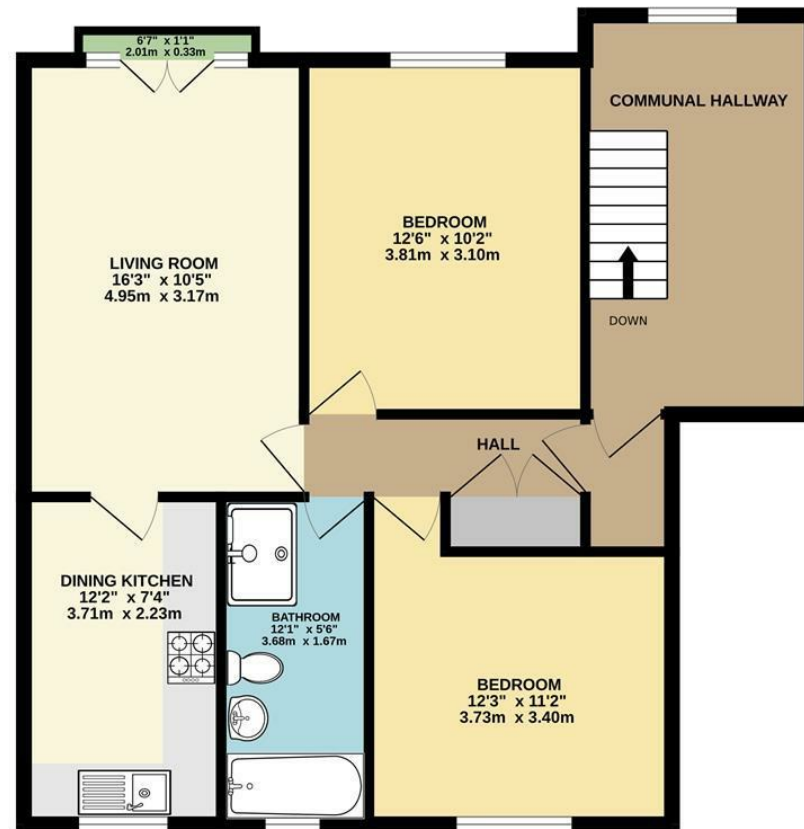
EPC Rating C

Local Authority Stockport

Council Tax C



FIRST FLOOR



Whilst every attempt has been made to ensure the accuracy of the floorplan contained here, measurements of doors, windows, rooms and any other items are approximate and no responsibility is taken for any error, omission or mis-statement. This plan is for illustrative purposes only and should be used as such by any prospective purchaser. The services, systems and appliances shown have not been tested and no guarantee as to their operability or efficiency can be given.
Made with Metropix ©2024



These particulars are believed to be accurate but they are not guaranteed and do not form a contract. Neither Jordan Fishwick nor the vendor or lessor accept any responsibility in respect of these particulars, which are not intended to be statements or representations of fact and any intending purchaser or lessee must satisfy himself by inspection or otherwise as to the correctness of each of the statements contained in these particulars. Any floorplans on this brochure are for illustrative purposes only and are not necessarily to scale.

Offices at: Chorlton, Didsbury, Disley, Hale, Glossop, Macclesfield, Manchester Deansgate, Manchester Whitworth Street, New Mills, Sale, Wilmslow and Withington

14 Market Street, Disley, Cheshire, SK12 2AA

01663 76 78 78

disley@jordanfishwick.co.uk

www.jordanfishwick.co.uk