



135 Woodhouse Lane, Manchester, M22 9WN

£1,200 Per Calendar Month

www.jordanfishwick.co.uk





Jordan Fishwick

- Available Now!
- Unfurnished
- Driveway parking
- Council Tax A
- Three Bed End of Terrace
- Well Presented
- Generous garden
- EPC Rating D

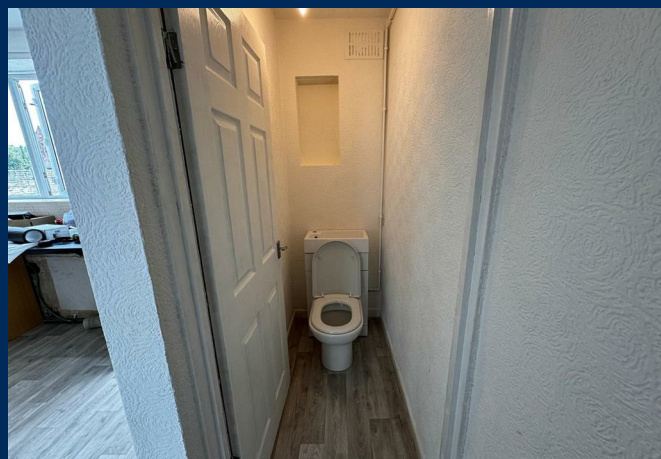
AVAILABLE NOW! Well presented three bedroom end of terrace. Over 600sqft of accommodation located close to transport links and Wythenshawe Forum.

The property briefly comprises: entrance hallway, lounge, kitchen with integrated fridge, washing machine and gas cooker. Conservatory, leading into a great size garden.

Upstairs, two double bedrooms and a great size third bedroom.

EPC Rating D. Council Tax Band A.

£1,200 Per Calendar Month





01619622828

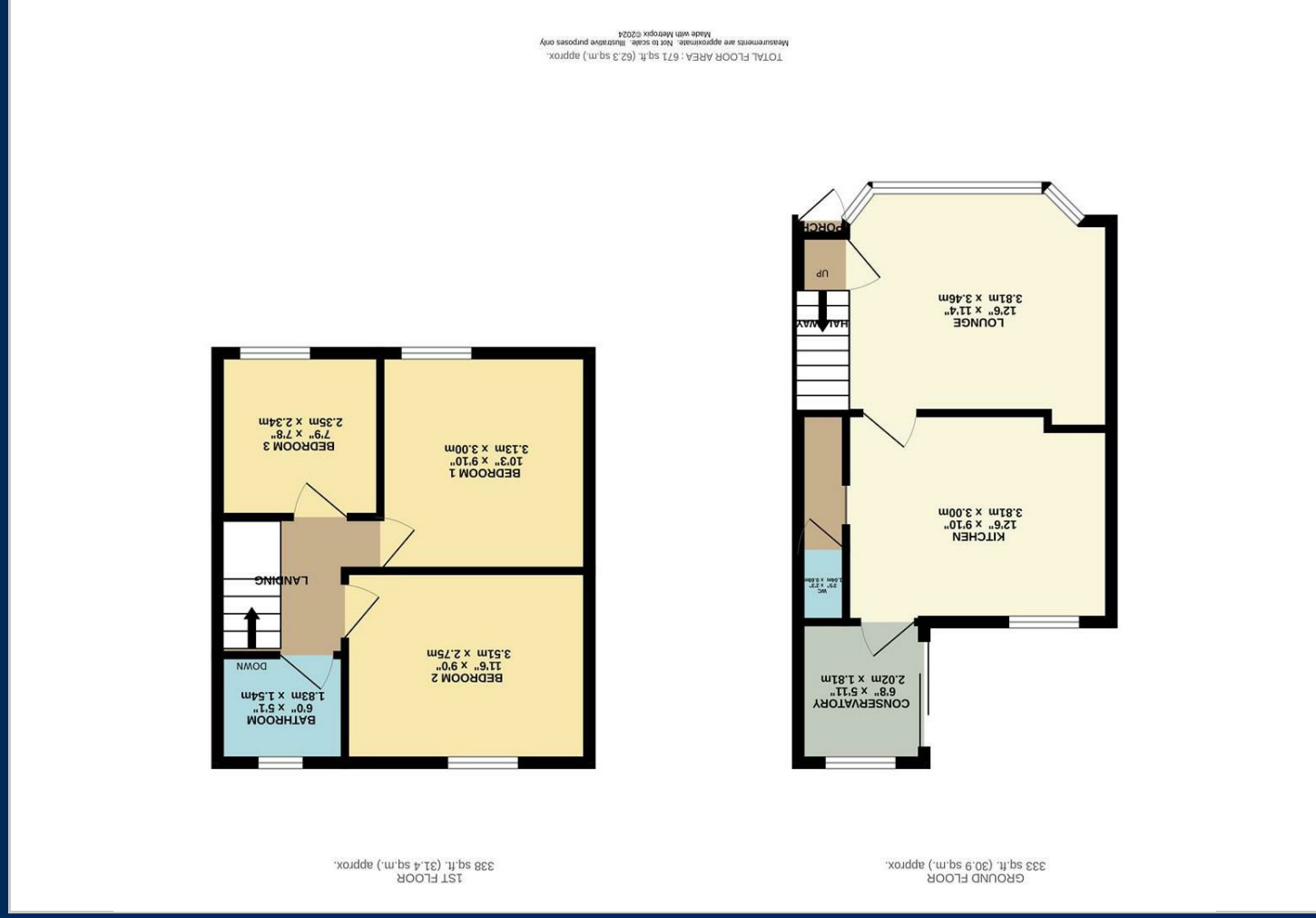
Jordan fishwick

Why take a risk?
Sell Smarter

The logo for Jordan fishwick, consisting of a large, stylized letter 'f' that is blue on the left and red on the right.

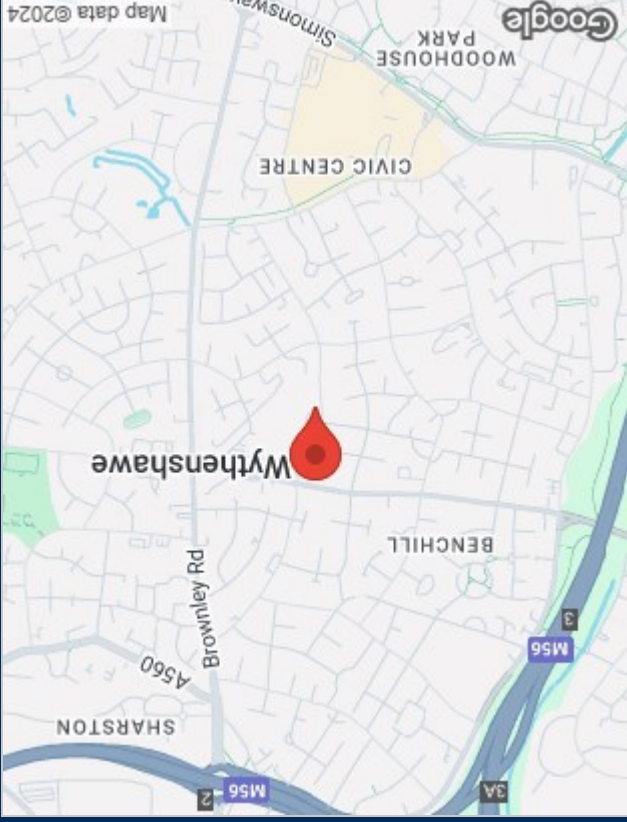


Floor Plans

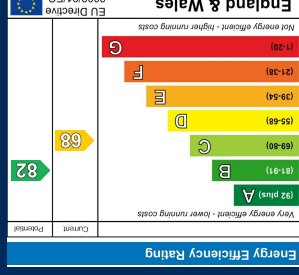


Viewing

Please contact our Sale Lettings Office on if you wish to arrange a viewing appointment for this property or require further information.



Energy Performance Graph



The particulars are set out as a general outline only for the guidance of intended purchasers or lessees, and do not constitute, any part of a contract. Nothing in these particulars shall be deemed to be a statement that the property is in good structural condition or otherwise nor that any of the services, appliances, equipment or facilities are in good working order. Purchasers should satisfy themselves in this prior to purchasing.