



*Jordan fishwick*

5 Albemarle Road, M21 9HX  
Guide Price £495,000





## Albemarle Road Chorlton M21 9HX

Guide Price £495,000



### The Property

A most attractive and very well presented period mid terraced property with EXTENDED accommodation over THREE FLOORS ideal for a young couple or family. Located on a highly regarded road in Chorlton Green, with easy access to Chorlton Ees, local shops, schools parks and the Metro. Comprises briefly: covered porch, entrance hall, lounge, family room with wood burning stove opening onto the extended fitted dining kitchen. To the first floor there are two good sized bedrooms and a large bathroom with a four piece suite in addition to a separate shower. To the second floor is a large main bedroom. Gas central heating and double glazing are installed. There is a garden area to the front of the property and a delightful private and enclosed SOUTH FACING court yard garden. Offered in excellent decorative order throughout, viewing of this fine home is highly recommended. Council Tax: C. EPC: D.



- Attractive & very well presented EXTENDED mid terraced period property
- Highly regarded & sought after Chorlton Green road
- Three double bedrooms
- Large re-fitted bathroom with separate shower
- Gas central heating & double glazing installed
- Private & enclosed SOUTH FACING rear court yard garden
- Retaining many original characteristics & features
- Excellent home for a young family or couple
- Fitted extended dining kitchen

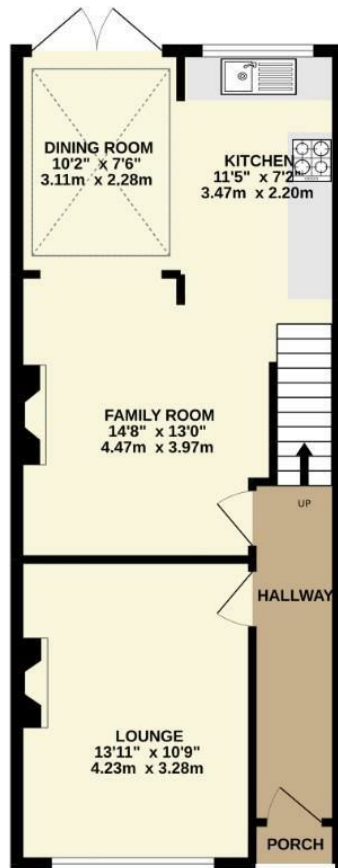


Energy Efficiency Rating		
	Current	Potential
Very energy efficient - lower running costs		
(92 plus) <b>A</b>		
(81-91) <b>B</b>		<b>82</b>
(69-80) <b>C</b>		
(55-68) <b>D</b>	<b>57</b>	
(39-54) <b>E</b>		
(21-38) <b>F</b>		
(1-20) <b>G</b>		
Not energy efficient - higher running costs		
<b>England &amp; Wales</b>	EU Directive 2002/91/EC	





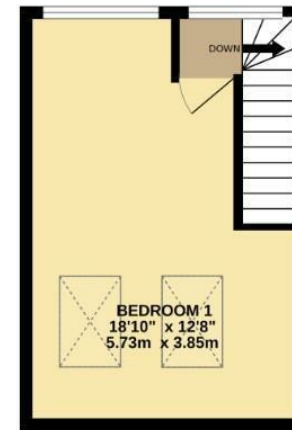
GROUND FLOOR  
535 sq.ft. (49.7 sq.m.) approx.



1ST FLOOR  
431 sq.ft. (40.0 sq.m.) approx.



2ND FLOOR  
238 sq.ft. (22.1 sq.m.) approx.



TOTAL FLOOR AREA : 1204 sq.ft. (111.8 sq.m.) approx.  
Measurements are approximate. Not to scale. Illustrative purposes only  
Made with Metropix ©2022



These particulars are believed to be accurate but they are not guaranteed and do not form a contract. Neither Jordan Fishwick nor the vendor or lessor accept any responsibility in respect of these particulars, which are not intended to be statements or representations of fact and any intending purchaser or lessee must satisfy himself by inspection or otherwise as to the correctness of each of the statements contained in these particulars. Any floorplans on this brochure are for illustrative purposes only and are not necessarily to scale.

Offices at: Chorlton, Didsbury, Disley, Hale, Glossop, Macclesfield, Manchester Deansgate, Manchester Whitworth Street, New Mills, Sale, Wilmslow and Withington