



jordan fishwick

FALLOWFIELD
Wilmslow Road



Wilmslow Road, Fallowfield, M14 6DW

£145,000

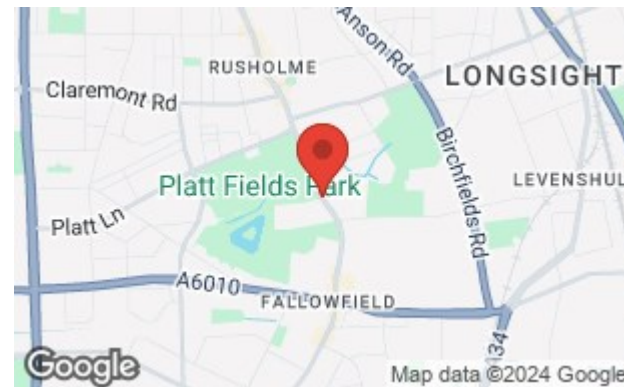


The Property

A light and spacious first floor apartment enjoying an enviable position within a purpose built development that enjoys an excellent location just off Wilmslow Road, offering easy access to the universities and Manchester City Centre. The accommodation comprises: Communal entrance, private entrance hall, large spacious lounge/dining room, through to the fitted kitchen, generous bedroom, and bathroom. Externally, there are well tended communal grounds, private residents' parking. Newly installed double glazing, electric heating and an allocated covered parking space completes the specification. Viewings highly recommended. No chain.

Directions

M14 6DW



- One bed apartment
- First floor position
- Newly installed double glazing
- Ideal first time purchase or investment
- Allocated parking
- Electric heating
- No Chain
- Opposite Plat Fields Park

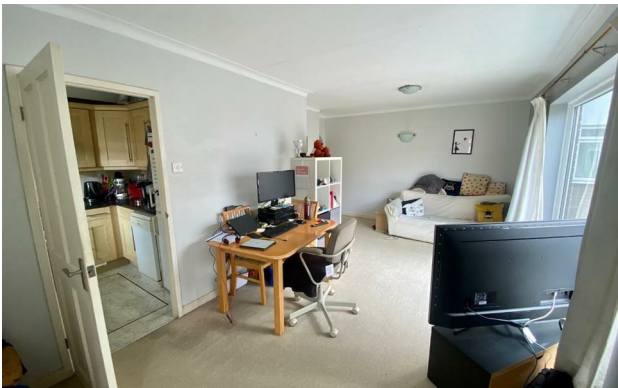
Postcode - M14 6DW

EPC Rating - E

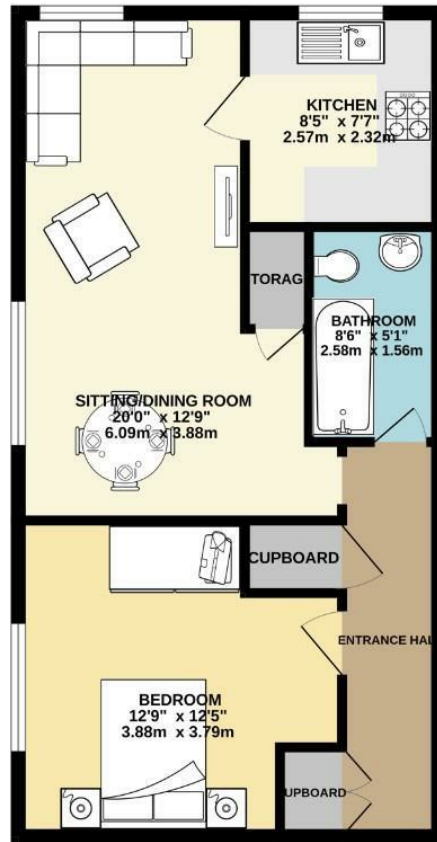
Floor Area - 537.00 sq ft

Local Authority - Manchester City council

Council Tax - A



GROUND FLOOR
537 sq.ft. (49.8 sq.m.) approx.



TOTAL FLOOR AREA: 537 sq.ft. (49.8 sq.m.) approx.
Measurements are approximate. Not to scale. Illustrative purposes only.
Made with Metropix ©2024



These particulars are believed to be accurate but they are not guaranteed and do not form a contract. Neither Jordan Fishwick nor the vendor or lessor accept any responsibility in respect of these particulars, which are not intended to be statements or representations of fact and any intending purchaser or lessee must satisfy himself by inspection or otherwise as to the correctness of each of the statements contained in these particulars. Any floorplans on this brochure are for illustrative purposes only and are not necessarily to scale.

Offices also at: Wilmslow, Macclesfield, Hale, Sale, Chorlton, Glossop, Manchester & Salford

757-759 Wilmslow Road, Didsbury Village, Manchester

0161 445 4480

didsbury@jordanfishwick.co.uk
www.jordanfishwick.co.uk