



jordan fishwick

DIDSBURY
135 Lapwing Lane



**135 Lapwing Lane,
Didsbury, M20 6US**

Guide Price £235,000



The Property

An appealing, two double bedroom, first floor apartment forming part of an attractive period conversion with original characteristics and being within a 'short stroll' of both Didsbury and West Didsbury Village, the Metrolink and Burton Road with its array of cafés, bars, restaurants & shops. In outline:- Communal entrance hall, private entrance hall, lounge/dining room with impressive dual aspect bay windows, fitted kitchen, main bedroom with private balcony off, second double bedroom and bathroom fitted with a white three-piece suite. In addition, there is gas central heating, residents parking and communal gardens. NO CHAIN.

Directions

M20 6US



- Attractive period conversion
- First floor apartment
- Two double bedrooms
- Private balcony
- Living room with dual aspect
- Feature bay windows
- Residents parking
- Gas central heating
- Ideal location
- No onward chain

Postcode - M20 6US

EPC Rating - C

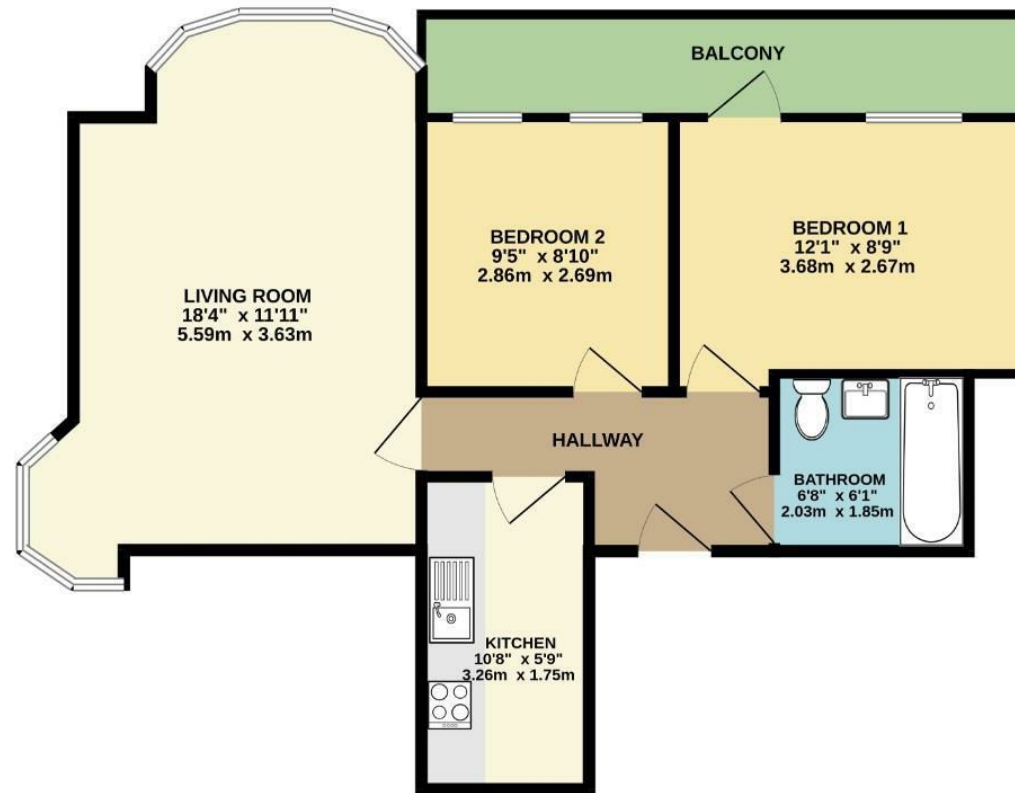
Floor Area - 556.00 sq ft

Local Authority - Manchester City Council

Council Tax - C



FIRST FLOOR
556 sq.ft. (51.7 sq.m.) approx.



TOTAL FLOOR AREA: 556 sq.ft. (51.7 sq.m.) approx.
Measurements are approximate. Not to scale. Illustrative purposes only
Made with: Metropix ©2024



These particulars are believed to be accurate but they are not guaranteed and do not form a contract. Neither Jordan Fishwick nor the vendor or lessor accept any responsibility in respect of these particulars, which are not intended to be statements or representations of fact and any intending purchaser or lessee must satisfy himself by inspection or otherwise as to the correctness of each of the statements contained in these particulars. Any floorplans on this brochure are for illustrative purposes only and are not necessarily to scale.

Offices also at: Wilmslow, Macclesfield, Hale, Sale, Chorlton, Glossop, Manchester & Salford

757-759 Wilmslow Road, Didsbury Village, Manchester

0161 445 4480

didsbury@jordanfishwick.co.uk
www.jordanfishwick.co.uk