



jordan fishwick

The Lodge, Lower Eaves Farm Chapel-En-Le-



The Lodge, Lower Eaves Farm Chapel-En-Le-Frith High Peak SK23 9UA

£575,000



The Property

Adjoining open fields with fabulous views, an imposing and beautifully presented stone built detached home. Spacious, character accommodation situated within a semi-rural location yet conveniently positioned for all the amenities of Chapel-en-le-frith including schools. Comprising: entrance hall, inner hall, living room, dining room with French doors, breakfast room, fitted kitchen, utility with wc, three first floor double bedrooms including an en-suite shower room and luxury bathroom with period suite. Gas central heating, pvc double glazing, Solar panels, open fire and wood burning stove. Private lawn gardens, ample off road parking and a great sized 22ft garage with side storage area. Viewing essential



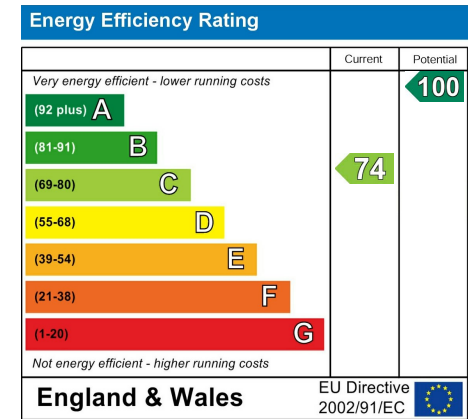
- Character Detached Stone Property
- Adjoining Open Countryside
- Three Double Bedrooms
- Semi Rural and Accessible For Amenities
- Beautifully Presented Throughout
- Ample Parking Plus 22ft Garage
- Solar Panels
- Private Lawned Gardens with Delightful Open Views
- Near to Primary and Secondary School
- Viewing Advised

Postcode SK23 9UA

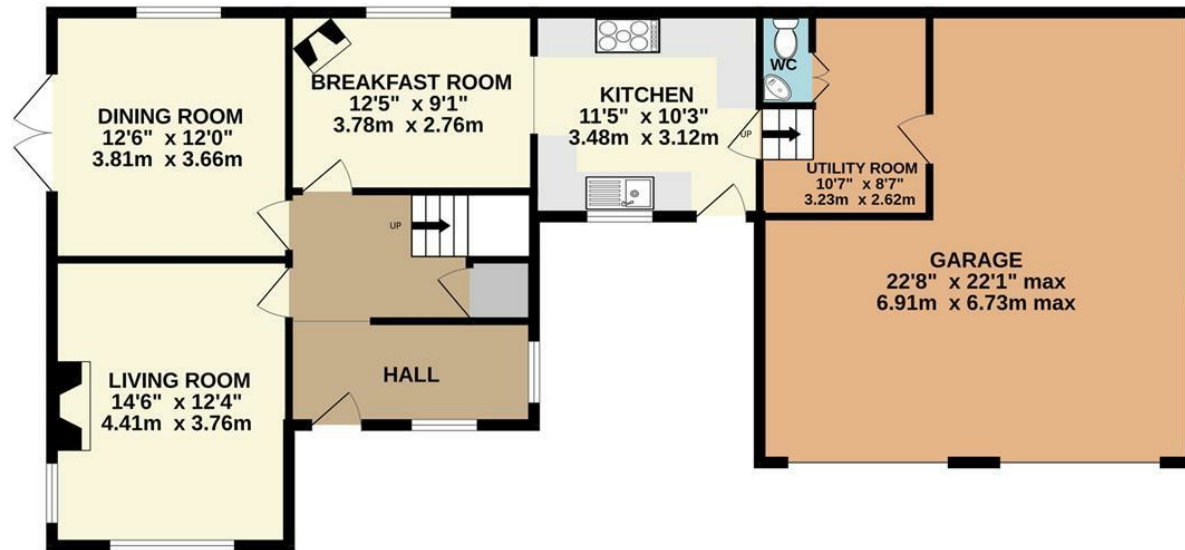
EPC Rating C

Local Authority High Peak

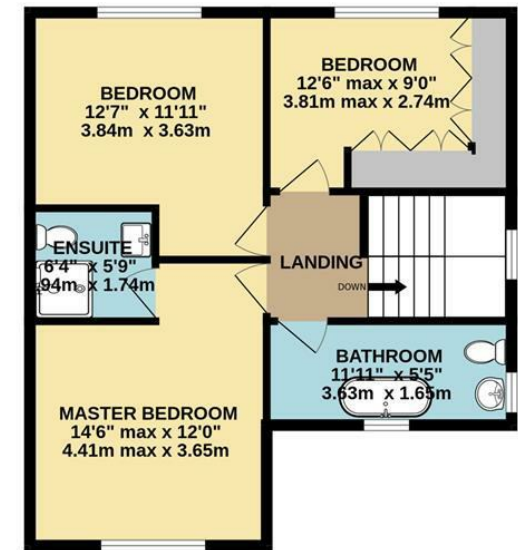
Council Tax D



GROUND FLOOR



1ST FLOOR



Whilst every attempt has been made to ensure the accuracy of the floorplan contained here, measurements of doors, windows, rooms and any other items are approximate and no responsibility is taken for any error, omission or mis-statement. This plan is for illustrative purposes only and should be used as such by any prospective purchaser. The services, systems and appliances shown have not been tested and no guarantee as to their operability or efficiency can be given.
 Made with Metropix ©2024



These particulars are believed to be accurate but they are not guaranteed and do not form a contract. Neither Jordan Fishwick nor the vendor or lessor accept any responsibility in respect of these particulars, which are not intended to be statements or representations of fact and any intending purchaser or lessee must satisfy himself by inspection or otherwise as to the correctness of each of the statements contained in these particulars. Any floorplans on this brochure are for illustrative purposes only and are not necessarily to scale.

Offices at: Chorlton, Didsbury, Disley, Hale, Glossop, Macclesfield, Manchester Deansgate, Manchester Whitworth Street, New Mills, Sale, Wilmslow and Withington

14 Market Street, Disley, Cheshire, SK12 2AA

01663 76 78 78

disley@jordanfishwick.co.uk

www.jordanfishwick.co.uk