



TO LET
jordan fishwick
lettings
01625 536 500

jordan fishwick

CHESHIRE
Barford Drive



Barford Drive, Cheshire, SK9 2GB

£1,250 PCM



The Property

PART FURNISHED AVAILABLE NOW - VIEWING HIGHLY RECOMMENDED
This extremely attractive semi detached property is located on the ever popular Villas development.
Having just undergone a full interior redecoration this two bedroom property is only a short walk to local shops and is within easy reach of the A34, Wilmslow town centre, train station and the motorway networks.
Entrance porch, through lounge dining room with laminate floor and patio doors to fully enclosed rear garden with shed, modern newly fitted kitchen with gas hob and electric oven, fridge and washer dryer.
To the first floor are two double bedrooms, one with fitted wardrobes, bathroom with shower over bath. Gas Central Heating. Fully Double Glazed. Driveway Parking
Contact Wilmslow 01625 536300 £1250.00pcm
COUNCIL TAX C
EPC C

Directions

SK9 2GB



- SEMI DETACHD
- TWO BEDROOMS
- OFF ROAD PARKING
- ENCLOSED REAR GARDEN
- CLOSE TO LOCAL SHOPS
- COUNCIL TAX C
- EPC C

Postcode - SK9 2GB

EPC Rating - C

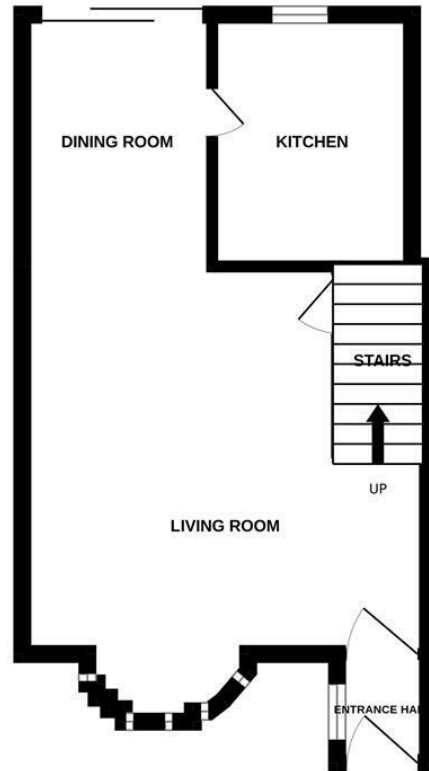
Floor Area - sq ft

Local Authority - Cheshire East Council

Council Tax - C



GROUND FLOOR



1ST FLOOR



Measurements are approximate. Not to scale. Illustrative purposes only
Made with Metropix ©2024



These particulars are believed to be accurate but they are not guaranteed and do not form a contract. Neither Jordan Fishwick nor the vendor or lessor accept any responsibility in respect of these particulars, which are not intended to be statements or representations of fact and any intending purchaser or lessee must satisfy himself by inspection or otherwise as to the correctness of each of the statements contained in these particulars. Any floorplans on this brochure are for illustrative purposes only and are not necessarily to scale.

Offices at: Chorlton, Didsbury, Disley, Hale, Glossop, Macclesfield, Manchester Deansgate, Manchester Whitworth Street, New Mills, Sale, Wilmslow and Withington

01625 536300

wilmslow@jordanfishwick.co.uk
www.jordanfishwick.co.uk