

*jordan fishwick*

757-759 Wilmslow Road  
Didsbury Village  
Manchester  
M20 6RN  
didsbury@jordanfishwick.co.uk  
0161 434 5290



Houseman Crescent, West Didsbury, Manchester,  
£1,150 Per Calendar Month





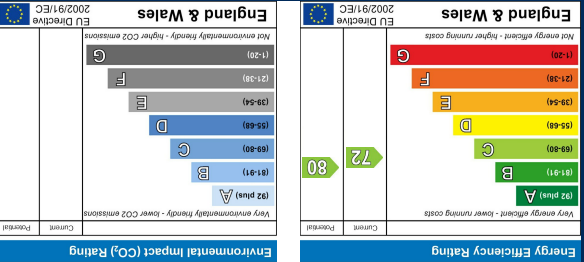
EPC Rating - C



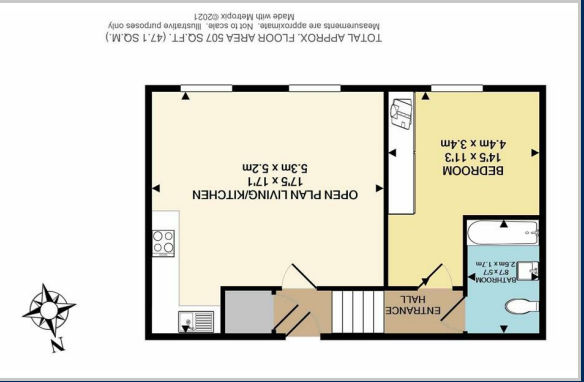
View our Virtual Tour Here - <https://youtu.be/1VFMFB3g3Xs>

\*\*\* VIEWINGS NOW FULL - PLEASE CALL TO REGISTER YOUR DETAILS \*\*\* AVAILABLE AUGUST \*\*\* A superbly presented first floor south facing apartment, with lovely views over the communal gardens. Forming part of the popular Didsbury Gate development, which is an impressive conversion of a Victorian building. It is ideally suited to a single occupant or couple only. Lying within beautifully landscaped grounds with quality fittings throughout, high ceilings and large sash windows, the living space in outline comprises:- a most impressive communal entrance with stairs and lift access to all floors, private split level entrance hall to the apartment, with storage cupboard off, open plan living/kitchen area with high ceilings, large sash windows and a modern fitted kitchen with all integrated appliances. Double bedroom with fitted furniture and the bathroom with a contemporary suite and chrome fittings. Furnished. Externally, there is also one allocated parking space within a secure gated area. To view please call Didsbury on 0161 434 5290

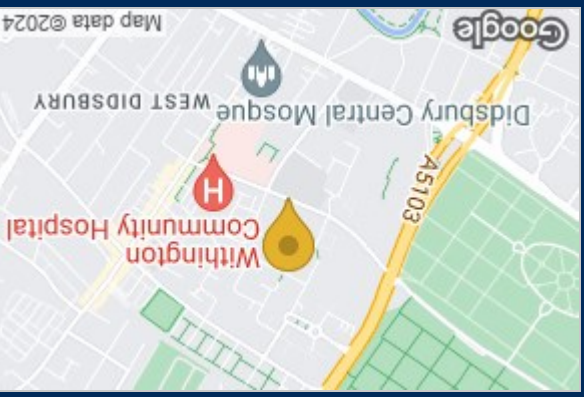
These particulars, whilst believed to be accurate are set out as a general outline only for guidance and do not constitute any part of an offer or contract. Intending purchasers should not rely on them as statements of representation of fact, but must satisfy themselves by inspection or otherwise as to their accuracy. No person in this firm's employment has the authority to make or give any representation or warranty in respect of the property.



Energy Efficiency Graph



Floor Plan



Area Map