



Jordan fishwick

How Lane Castleton Hope Valley



How Lane Castleton Hope Valley S33 8WJ

£475,000



The Property

Situated in picturesque and ever popular Castleton, adjoining and overlooking open farmland with far reaching views, a most impressive and extended, semi-detached family home. Well presented throughout with the perfect blend of open plan contemporary living and character styling including a cottage kitchen and wood burning stove. Generous south easterly facing, landscaped gardens, off road parking together with double glazing and gas central heating. Comprising: entrance hall, wc, living room open to a dining area and kitchen, light and bright garden room, four first floor bedrooms and a family bathroom. Whether you're looking for a lovely family home that ticks the boxes or something with holiday let potential in this sought after location, don't delay and book a viewing today!



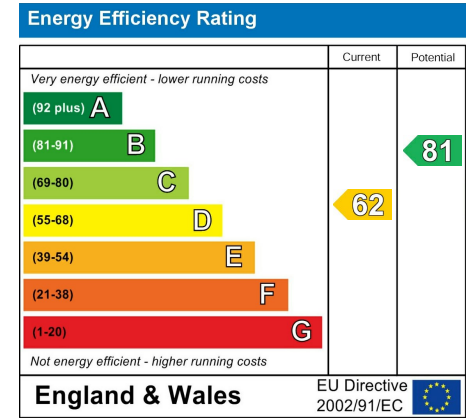
- Sought After Location In Castleton
- Convenient For Village Amenities
- Extended Open Plan Accommodation
- Four Bedroom Stone Built Semi Detached
- Landscaped Gardens and Off Road Parking
- Beautiful Views
- Adjoining Open Farmland
- Wood Burning Stove
- Cottage Style Kitchen

Postcode S33 8WJ

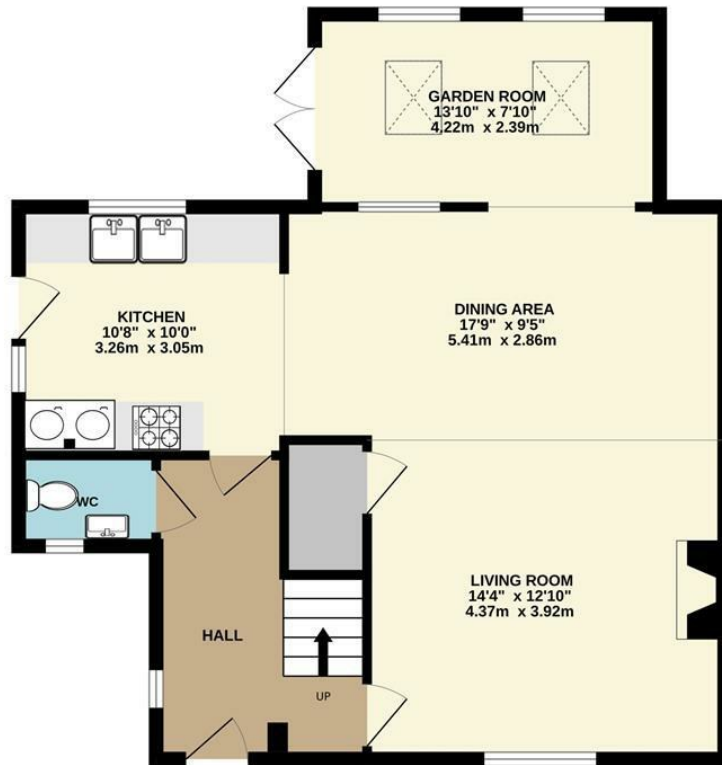
EPC Rating D

Local Authority High Peak

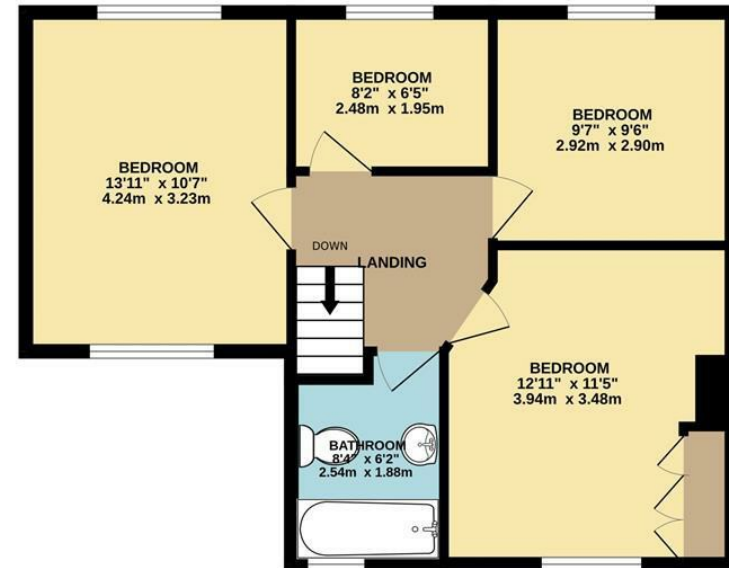
Council Tax C



GROUND FLOOR
686 sq.ft. (63.7 sq.m.) approx.



1ST FLOOR
538 sq.ft. (50.0 sq.m.) approx.



TOTAL FLOOR AREA : 1224 sq.ft. (113.7 sq.m.) approx.

Whilst every attempt has been made to ensure the accuracy of the floorplan contained here, measurements of doors, windows, rooms and any other items are approximate and no responsibility is taken for any error, omission or mis-statement. This plan is for illustrative purposes only and should be used as such by any prospective purchaser. The services, systems and appliances shown have not been tested and no guarantee as to their operability or efficiency can be given.
Made with Metropix ©2024



These particulars are believed to be accurate but they are not guaranteed and do not form a contract. Neither Jordan Fishwick nor the vendor or lessor accept any responsibility in respect of these particulars, which are not intended to be statements or representations of fact and any intending purchaser or lessee must satisfy himself by inspection or otherwise as to the correctness of each of the statements contained in these particulars. Any floorplans on this brochure are for illustrative purposes only and are not necessarily to scale.

Offices at: Chorlton, Didsbury, Disley, Hale, Glossop, Macclesfield, Manchester Deansgate, Manchester Whitworth Street, New Mills, Sale, Wilmslow and Withington

14 Market Street, Disley, Cheshire, SK12 2AA

01663 76 78 78

disley@jordanfishwick.co.uk

www.jordanfishwick.co.uk