



*Jordan fishwick*

Cheetham Hill Road  
Dukinfield



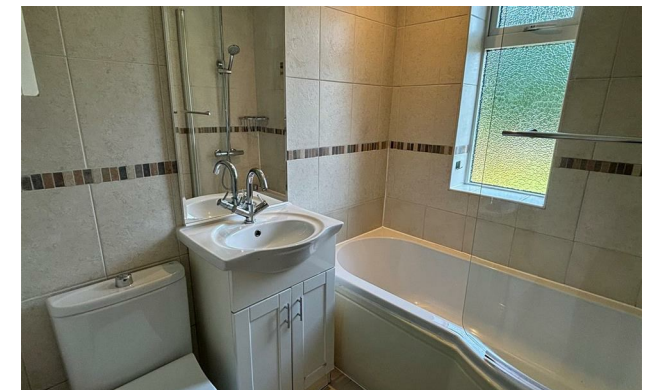
**Cheetham Hill Road  
Dukinfield SK16 5JX**  
£995 Per Calendar Month



### **The Property**

Available Now! Spacious Family Home within Dukinfield. This property is located within close distance to all local amenities, schools and transport links. Briefly comprises Entrance hall, Lounge with featured wall and fire, Modern kitchen diner, Two double bedrooms, Family bathroom and fully enclosed large lawned garden including decking and storage shed. Off road parking for two vehicles. EPC Rating D

### **Directions**



- Available Now
- Off Road parking
- Spacious lounge
- Kitchen Diner
- Council Tax A
- EPC Rating D
- Two Bedrooms
- Large Rear Garden
- Family Bathroom.

Postcode - SK16 5JX

EPC Rating - D

Floor Area - sq ft

Local Authority - Tameside

Council Tax - A





These particulars are believed to be accurate but they are not guaranteed and do not form a contract. Neither Jordan Fishwick nor the vendor or lessor accept any responsibility in respect of these particulars, which are not intended to be statements or representations of fact and any intending purchaser or lessee must satisfy himself by inspection or otherwise as to the correctness of each of the statements contained in these particulars. Any floorplans on this brochure are for illustrative purposes only and are not necessarily to scale.

Offices at: Offices at Chorlton, Didsbury, Disley, Hale, Glossop, Macclesfield, Manchester Deansgate, Manchester Whitworth Street, New Mills, Sale, Wilmslow and Withington

44 High Street West, Glossop, Derbyshire, SK13 8BH

**01457 858 888**

[glossop@jordanfishwick.co.uk](mailto:glossop@jordanfishwick.co.uk)  
[www.jordanfishwick.co.uk](http://www.jordanfishwick.co.uk)