



jordan fishwick

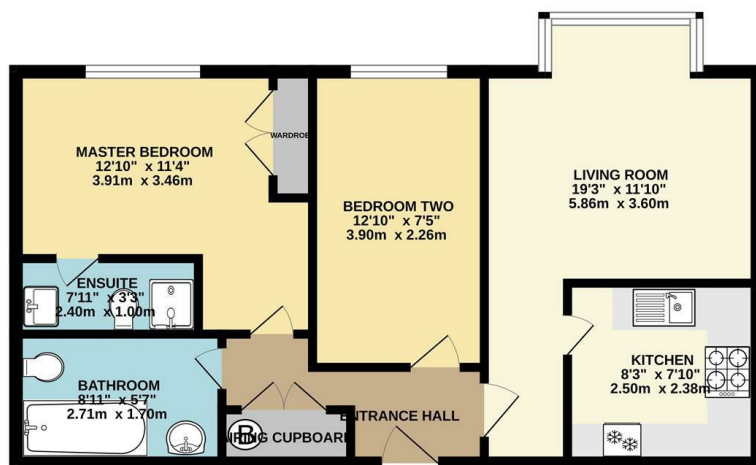
16 DEVONSHIRE COURT 7 DERBYSHIRE ROAD SOUTH SALE
Per Calendar Month £1,200 Per

16 DEVONSHIRE COURT 7 DERBYSHIRE ROAD SOUTH SALE M33 3YN

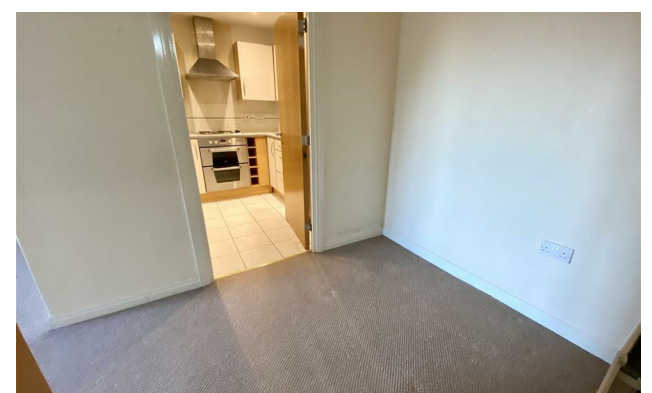
* AVAILABLE NOW* A modern, well presented TWO BED first floor apartment, with PARKING. Situated within walking distance of Sale Moor Village and Brooklands Metro Link, this property provides spacious living in a convenient location. Internal accommodation includes entrance hallway with storage, a bright living room and fully fitted kitchen with appliances. There are two double bedrooms, with an en suite off the master bedroom which are both South Facing offering natural light all day, and a family bathroom. The development sits on communal gardens and offers lift facilities and underground parking for residents. Property is warmed by central heating. EPC Rating B. Council Tax Band D. Unfurnished with White Goods.



GROUND FLOOR
558 sq.ft. (51.9 sq.m.) approx.



TOTAL FLOOR AREA - 558 sq ft (51.9 sq.m.) approx.
Measurements are approximate. Not to scale. Illustrative purposes only.
Made with Metropix (2023)



- Large First Floor Apartment
- Two Double Bedrooms & Two Bathrooms
- Available Now
- Fully Fitted Kitchen Integrated White Goods
- Underground Parking
- Lift Facilities
- Unfurnished
- EPC Rating B
- Management Company Do Not Allow Pets

Energy Efficiency Rating		Environmental Impact (CO ₂) Rating	
Current	Potential	Current	Potential
83	84	1	1

Energy Efficiency Rating: A (92 plus), B (81-91), C (69-80), D (55-68), E (39-54), F (21-38), G (1-20).
Environmental Impact (CO₂) Rating: A (92 plus), B (81-91), C (69-80), D (55-68), E (39-54), F (21-38), G (1-20).