



jordan fishwick

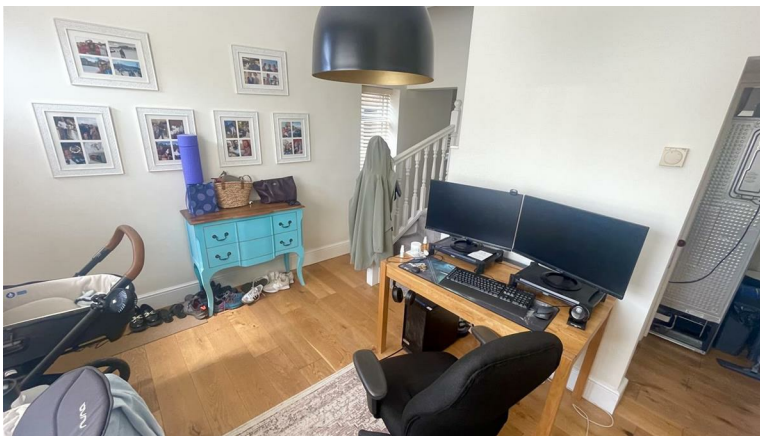
68 ALTRINCHAM ROAD WILMSLOW SK9 5NG
Guide Price £465,950

68 ALTRINCHAM ROAD WILMSLOW SK9 5NG

Take a look into this beautifully presented three bedroom semi detached home, located centrally in Wilmslow town centre. Wilmslow offers many amenities which include bars, cafes, restaurants and parks. The property also benefits from being conveniently positioned for Wilmslow train station which is only a short walk away. Internally the ground floor accommodation offers two reception rooms creating great space and sociable opportunities, a modern fitted kitchen with island unit and some integrated appliances. The first floor provides three bedrooms, two of which are generously sized double rooms and a modern styled family bathroom with comprises a white three piece suite. The property also offers additional cellar space which currently serves purpose for washing facilities. Externally the property benefits from one off road parking space and garden area with summer house to the very rear. Pictures shown reflect pre-tenancy and current. VIEWINGS ESSENTIAL.



Measurements are approximate. Not to scale. Illustrative purposes only. Made with MetreXp 12/2024



- Excellent Location
- Three Bedroom
- Semi-Detached
- Modernised Open Plan Kitchen / Living Area
- Stylish Three Piece Suite Bathroom
- Off Road Parking
- Garden Space to Rear

Energy Efficiency Rating		Environmental Impact (CO ₂) Rating			
Very energy efficient - lower running costs	Current	Potential	Very environmentally friendly - lower CO ₂ emissions	Current	Potential
(92 plus) A			(92 plus) A		
(81-91) B			(81-91) B		
(69-80) C			(69-80) C		
(55-68) D			(55-68) D		
(39-54) E			(39-54) E		
(21-38) F			(21-38) F		
(1-20) G			(1-20) G		
Not energy efficient - higher running costs			Not environmentally friendly - higher CO ₂ emissions		
England & Wales		EU Directive 2002/91/EC	England & Wales		EU Directive 2002/91/EC
		84		1	1
		53			