



Jordan fishwick

Apt 3710 Beetham Tower, 301 Deansgate,
£1,800 Per Calendar Month



Beetham Tower Manchester M3 4LU

£1,800 Per Calendar Month




The Property

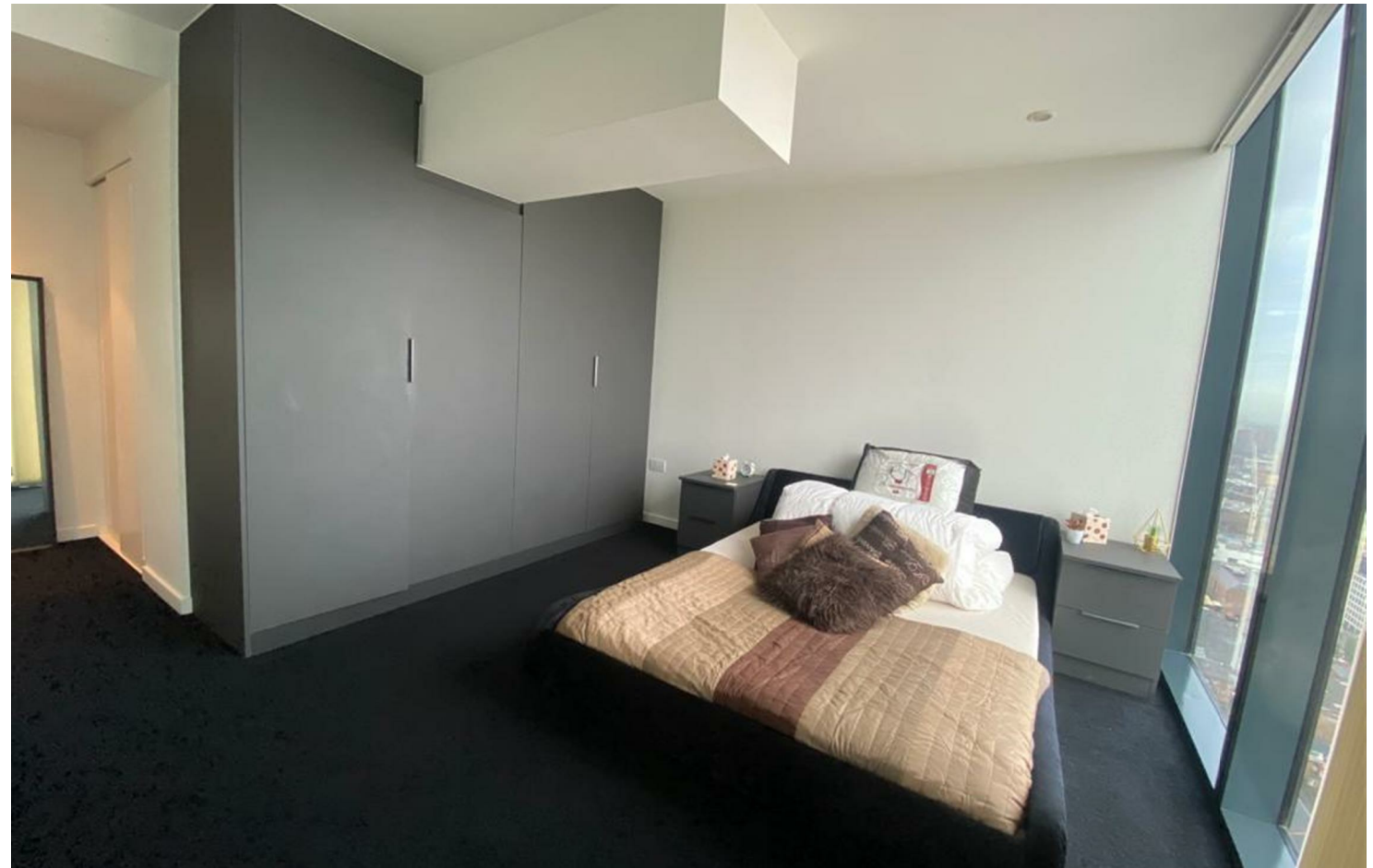
Available Late August! Fantastic opportunity to rent in Manchester's most prestigious location. With breath-taking views from the 37th floor over the City coming as standard, you won't fail to be impressed here. Entrance hall with ample storage, spacious living room with floor to ceiling windows, plasma television and luxury furniture, dining area and excellent fitted kitchen with oven, hob, dishwasher, washer/dryer and microwave. Both bedrooms have spectacular views with the master having fitted wardrobes and en-suite shower. Separate bathroom with shower. Furnished. No parking. No pets. Tax Band F. EPC Rating B.

VIDEO/PHOTO OFFERS NOT ACCEPTED - PLEASE BOOK AN INPERSON VIEWING

- Available Late August
- 37th Floor Apartment
- Two Bedrooms - Furnished
- Great City Views
- En-Suite & Bathroom
- EPC Rating B.
- Tax Band F
- No Parking
- 24 hour Concierge



Energy Efficiency Rating		
	Current	Potential
Very energy efficient - lower running costs		
(92 plus) A		
(81-91) B	78	80
(69-80) C		
(55-68) D		
(39-54) E		
(21-38) F		
(1-20) G		
Not energy efficient - higher running costs		
England & Wales	EU Directive 2002/91/EC 	





These particulars are believed to be accurate but they are not guaranteed and do not form a contract. Neither Jordan Fishwick nor the vendor or lessor accept any responsibility in respect of these particulars, which are not intended to be statements or representations of fact and any intending purchaser or lessee must satisfy himself by inspection or otherwise as to the correctness of each of the statements contained in these particulars. Any floorplans on this brochure are for illustrative purposes only and are not necessarily to scale.

Offices at: Offices at Chorlton, Didsbury, Disley, Hale, Glossop, Macclesfield, Manchester Deansgate, Manchester Whitworth Street, New Mills, Sale, Wilmslow and Withington