



jordan fishwick

3 Brigadier Close, Withington, M20 3BX
£825 PCM



Brigadier Close Manchester M20 3BX

£825 PCM



The Property


View our Virtual Tour Here - <https://youtu.be/ofOacN3tNgM>

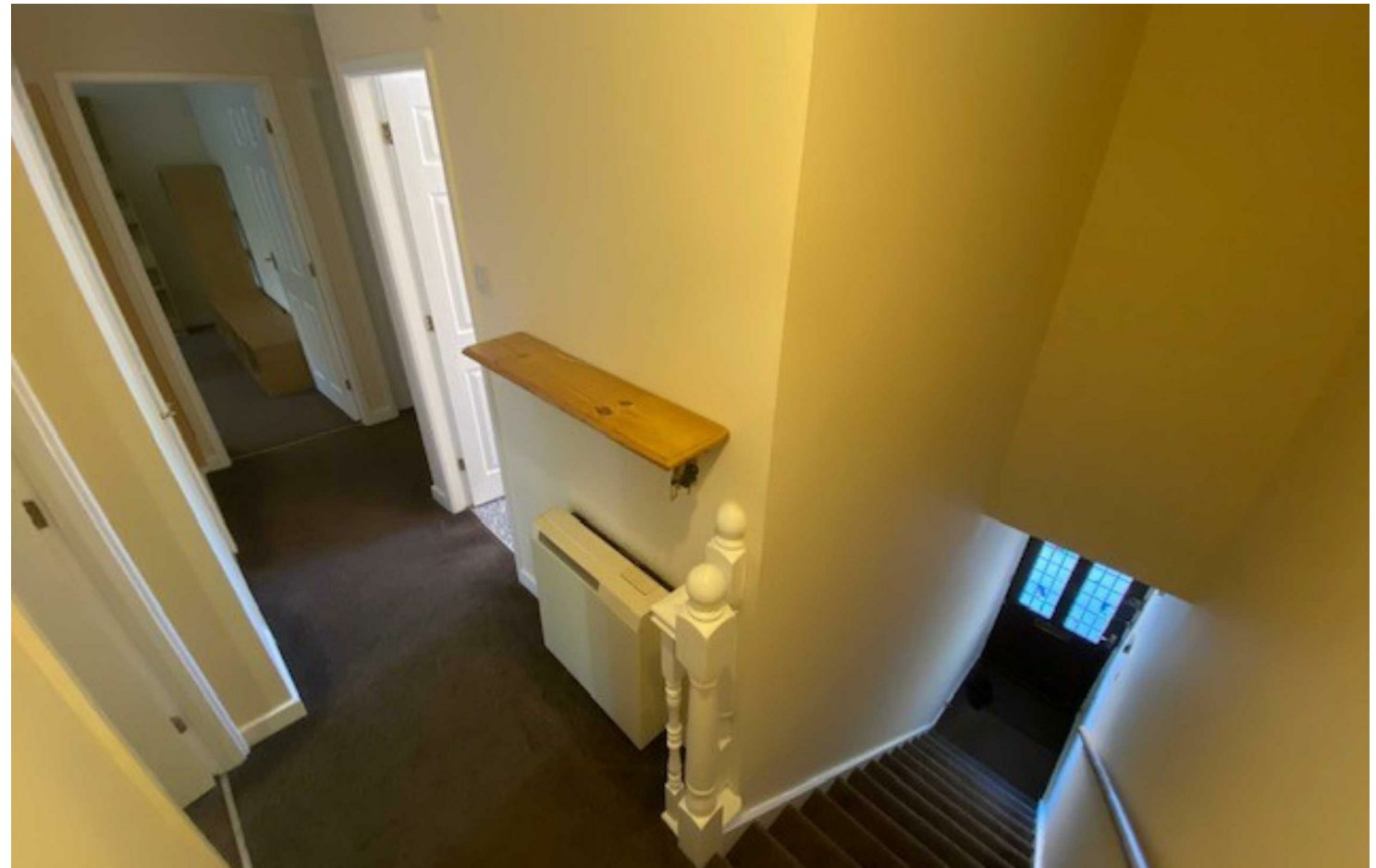
*** AVAILABLE AUGUST *** A spacious, two double bedroom, first floor apartment forming part of a popular purpose built development that enjoys an excellent location which is within easy reach of both Withington and West Didsbury Villages. Well presented throughout with the benefit of both double glazed windows and electric heating, the living space in outline comprises:- Private ground floor entrance, first floor landing with two storage cupboards, lounge/dining room, fitted kitchen, two double bedrooms and a bathroom with three piece suite. Fully Furnished. Parking. Call Withington 0161 438 2411 to arrange a viewing.

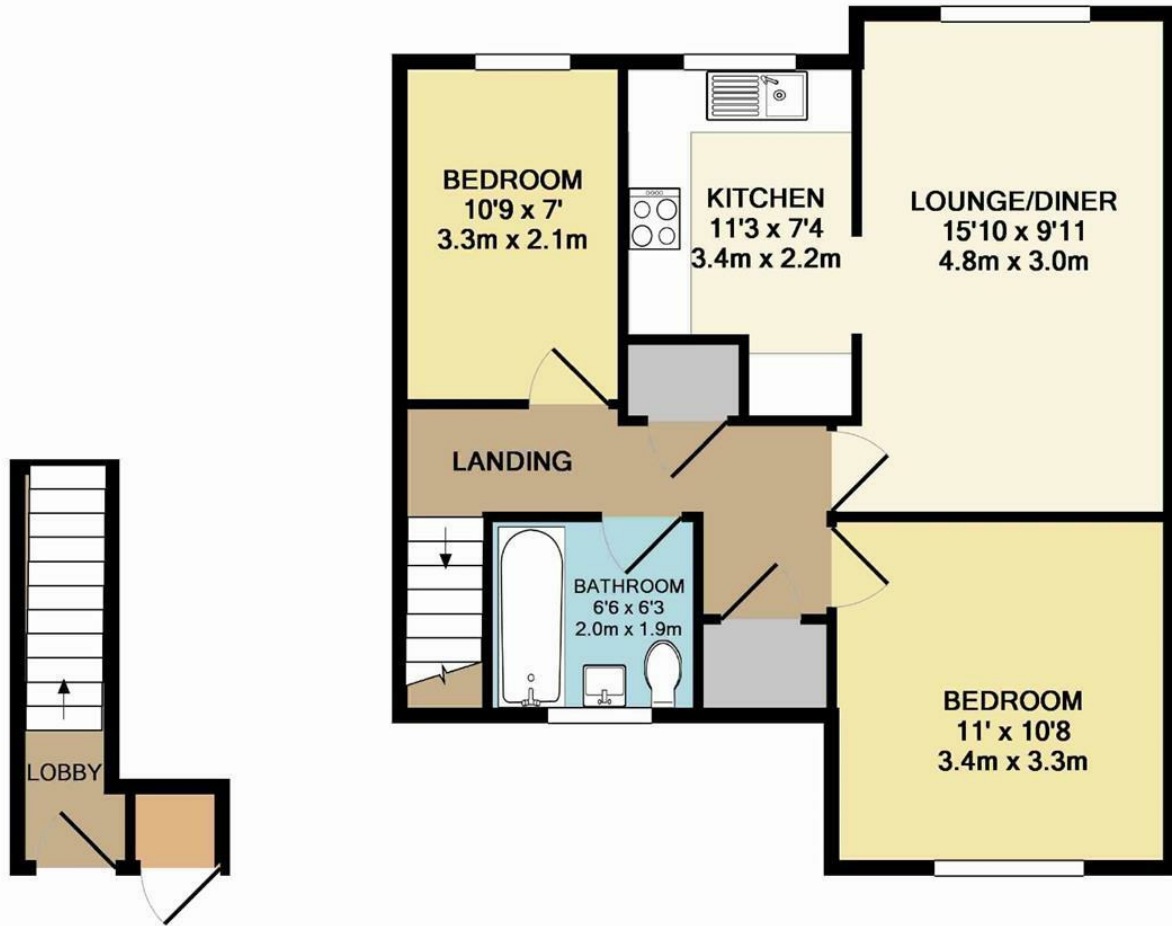
EPC Rating - C

- Available August
- Two Bedroom Apartment
- First Floor with Private Entrance
- Ideal for a Couple of Sharers
- Parking
- Fully Furnished
- Great Location



Energy Efficiency Rating		
	Current	Potential
Very energy efficient - lower running costs		
(92 plus) A		
(81-91) B		
(69-80) C	74	77
(55-68) D		
(39-54) E		
(21-38) F		
(1-20) G		
Not energy efficient - higher running costs		
England & Wales	EU Directive 2002/91/EC 	





GROUND FLOOR
APPROX. FLOOR
AREA 46 SQ.FT.
(4.3 SQ.M.)

1ST FLOOR
APPROX. FLOOR
AREA 564 SQ.FT.
(52.4 SQ.M.)

TOTAL APPROX. FLOOR AREA 610 SQ.FT. (56.7 SQ.M.)
Measurements are approximate. Not to scale. Illustrative purposes only
Made with Metropix ©2015



These particulars are believed to be accurate but they are not guaranteed and do not form a contract. Neither Jordan Fishwick nor the vendor or lessor accept any responsibility in respect of these particulars, which are not intended to be statements or representations of fact and any intending purchaser or lessee must satisfy himself by inspection or otherwise as to the correctness of each of the statements contained in these particulars. Any floorplans on this brochure are for illustrative purposes only and are not necessarily to scale.

Offices at: Offices at Chorlton, Didsbury, Disley, Hale, Glossop, Macclesfield, Manchester Deansgate, Manchester Whitworth Street, New Mills, Sale, Wilmslow and Withington