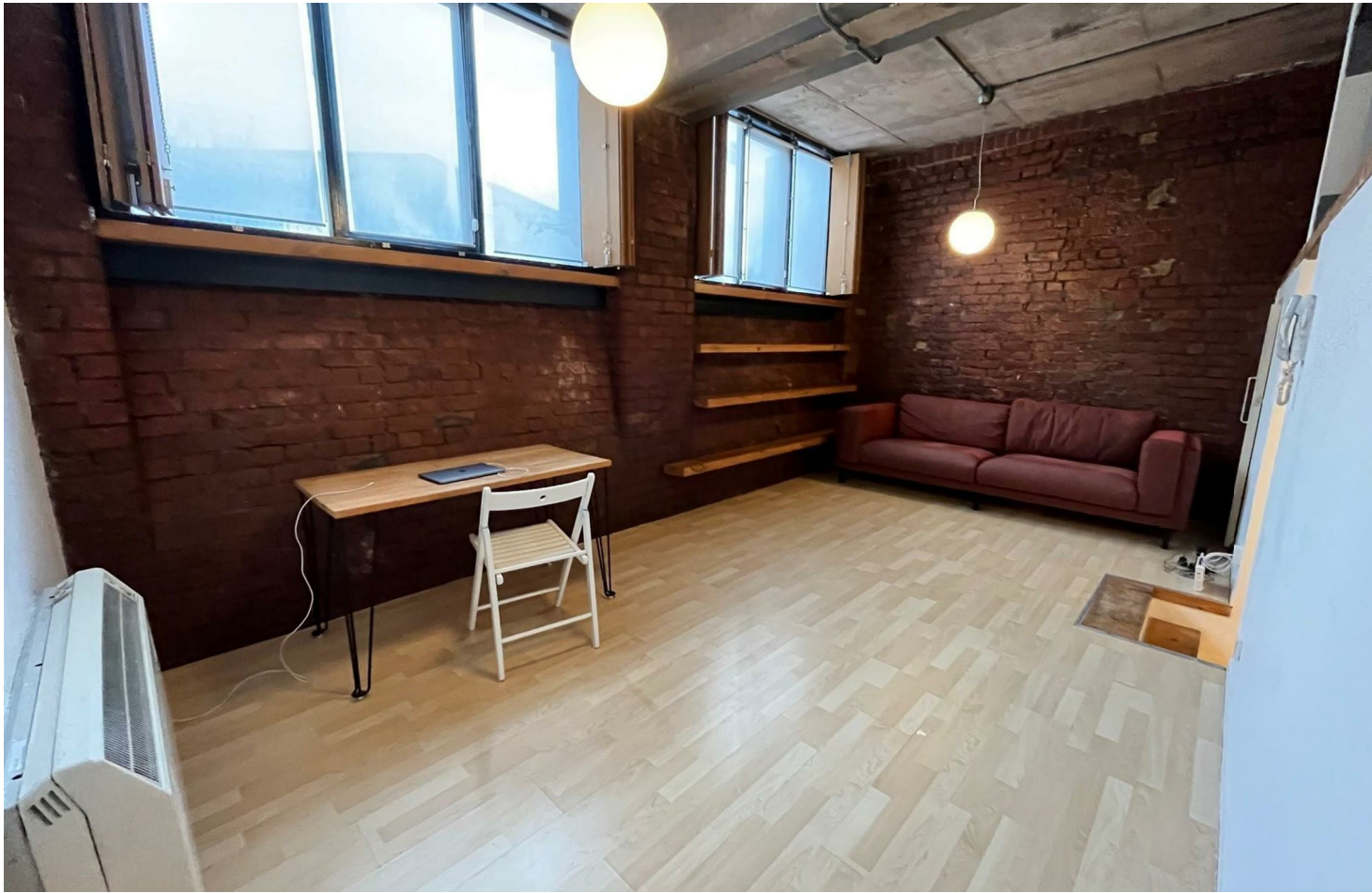




*Jordan fishwick*

Apt 16 Britannia Mills, Hulme Hall Road,  
£1,150 Per Calendar Month





## Britannia Mills Manchester M15 4LA

£1,150 Per Calendar Month



### The Property

Available Early September. Jordan Fishwick presents this large one bedroom loft conversion, located in the iconic building Britannia Mills. A ground floor apartment which has a mezzanine bedroom, fitted kitchen including oven, hob and fridge. The large living room has full height ceiling and large windows for light. The bedroom area which overlooks the living area below on one side & the Dining area on the other. Furnished. No Parking. Tax Band B. EPC Rating D. On site Gym.

REPOSIT is available for this property (alternative Zero deposit option) - ask for more information.

**\*VIDEO OFFERS NOT ACCEPTED - PLEASE BOOK AN INPERSON VIEWING\***



- Available Early September
- Large space 1 bed
- Mezzanine
- Close to the City
- EPC Rating D
- Tax Band B
- On site Gym
- No Parking
- REPOSIT (Nil Deposit) Available



Energy Efficiency Rating		
	Current	Potential
Very energy efficient - lower running costs		
(92 plus) <b>A</b>		
(81-91) <b>B</b>		
(69-80) <b>C</b>		<b>76</b>
(55-68) <b>D</b>	<b>55</b>	
(39-54) <b>E</b>		
(21-38) <b>F</b>		
(1-20) <b>G</b>		
Not energy efficient - higher running costs		
<b>England &amp; Wales</b>	EU Directive 2002/91/EC	





These particulars are believed to be accurate but they are not guaranteed and do not form a contract. Neither Jordan Fishwick nor the vendor or lessor accept any responsibility in respect of these particulars, which are not intended to be statements or representations of fact and any intending purchaser or lessee must satisfy himself by inspection or otherwise as to the correctness of each of the statements contained in these particulars. Any floorplans on this brochure are for illustrative purposes only and are not necessarily to scale.

Offices at: Offices at Chorlton, Didsbury, Disley, Hale, Glossop, Macclesfield, Manchester Deansgate, Manchester Whitworth Street, New Mills, Sale, Wilmslow and Withington