



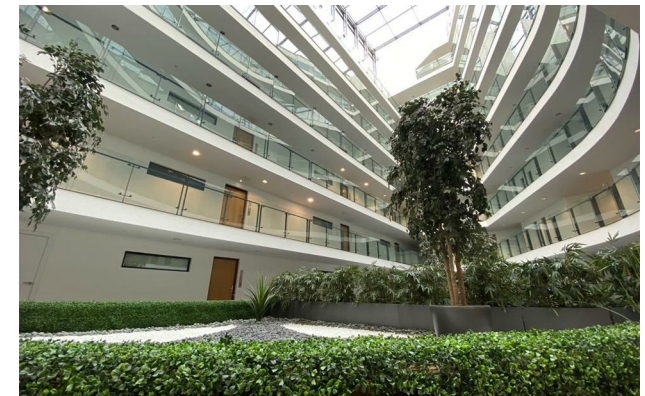
Jordan fishwick

Apt 9 Hill Quays, Block B, M15 4QW
£1,350 Per Calendar Month



Hill Quays 8 Commercial Street M15 4QW

£1,350 Per Calendar Month



The Property

Available Now. This larger than average first floor luxury apartment is located in Block B Hill Quays with added benefits of water views and balcony. Situated close to Deansgate station allowing for excellent transport links, the property comprises of; entrance hall with ample storage space, spacious living room with floor to ceiling window and open to the kitchen, with white high gloss kitchen and fitted appliances, dishwasher, washer/dryer, oven and hob. Two double sized bedrooms with the master having full en-suite shower and separate family bathroom with tiled floor and chrome heated towel rail. The property is offered Furnished. No Parking. Council Tax Band D. EPC Rating C.

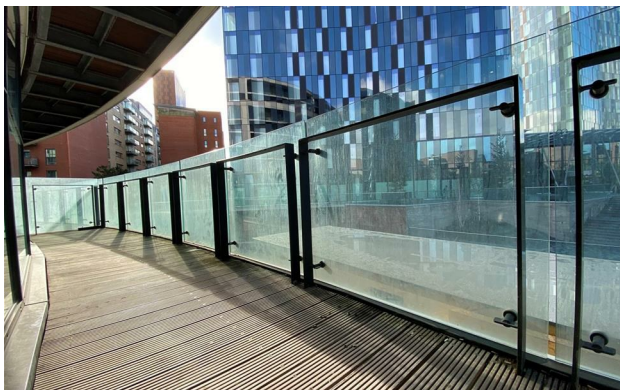
VIDEO/PHOTO OFFERS NOT ACCEPTED - PLEASE CALL TO BOOK AN IN PERSON VIEWING



- Available Now
- Furnished
- En-Suite & Bathroom
- Great Location
- Tax Band D
- EPC Rating C
- No Parking
- High Spec Throughout



Energy Efficiency Rating		
	Current	Potential
Very energy efficient - lower running costs		
(92 plus) A		
(81-91) B		
(69-80) C	80	86
(55-68) D		
(39-54) E		
(21-38) F		
(1-20) G		
Not energy efficient - higher running costs		
England & Wales	EU Directive 2002/91/EC	





These particulars are believed to be accurate but they are not guaranteed and do not form a contract. Neither Jordan Fishwick nor the vendor or lessor accept any responsibility in respect of these particulars, which are not intended to be statements or representations of fact and any intending purchaser or lessee must satisfy himself by inspection or otherwise as to the correctness of each of the statements contained in these particulars. Any floorplans on this brochure are for illustrative purposes only and are not necessarily to scale.

Offices at: Offices at Chorlton, Didsbury, Disley, Hale, Glossop, Macclesfield, Manchester Deansgate, Manchester Whitworth Street, New Mills, Sale, Wilmslow and Withington