



jordan fishwick

Parkway New Mills High Peak

Parkway New Mills High Peak SK22 4DU

£425,000



The Property

Arranged over three floors and located in a popular established development on the edge of New Mills, an extended four/five bedroom detached home. Backing onto a wooded copse, this deceptive and most versatile home has to be seen. Close to open country yet convenient for the amenities of New Mills centre and railway station. Comprising: entrance hall, living room, dining room, kitchen, lower ground floor utility, wc, store, sitting room, study/bedroom five, four first floor bedrooms (one with ensuite) and a family bathroom. Pvc double glazing, gas central heating, driveway parking, single garage/store and a beautiful decked garden with undercover seating area.




- Upto Five Bedrooms
- Arranged Over Three Floors
- Versatile Accommodation
- Wooded Backdrop
- Well Presented Throughout
- Close to Open Countryside
- Detached Family Home
- Driveway, Garage and Decked Garden
- Popular Location

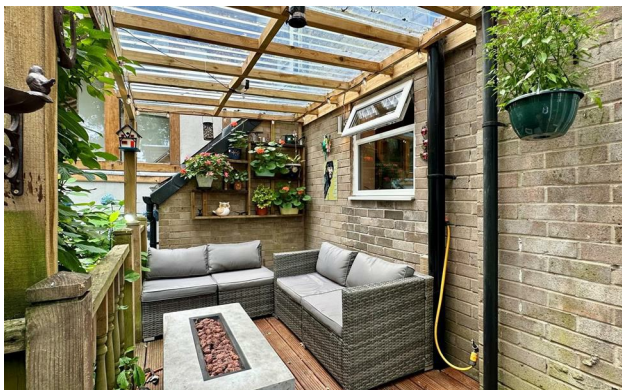
Postcode SK22 4DU

EPC Rating

Local Authority High Peak

Council Tax D

Energy Efficiency Rating		Current	Potential
Very energy efficient - lower running costs			
(92 plus)	A		
(81-91)	B		
(69-80)	C		
(55-68)	D		
(39-54)	E		
(21-38)	F		
(1-20)	G		
Not energy efficient - higher running costs			
England & Wales		EU Directive 2002/91/EC 	



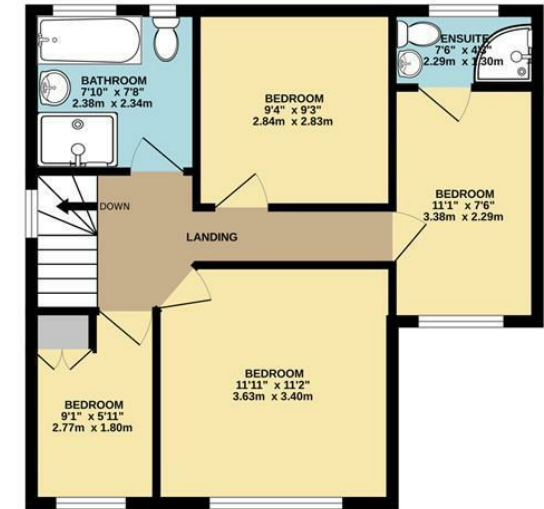
BASEMENT



GROUND FLOOR



1ST FLOOR



Whilst every attempt has been made to ensure the accuracy of the floorplan contained here, measurements of doors, windows, rooms and any other items are approximate and no responsibility is taken for any error, omission or mis-statement. This plan is for illustrative purposes only and should be used as such by any prospective purchaser. The services, systems and appliances shown have not been tested and no guarantee as to their operability or efficiency can be given.
 Made with Metropix ©2024



These particulars are believed to be accurate but they are not guaranteed and do not form a contract. Neither Jordan Fishwick nor the vendor or lessor accept any responsibility in respect of these particulars, which are not intended to be statements or representations of fact and any intending purchaser or lessee must satisfy himself by inspection or otherwise as to the correctness of each of the statements contained in these particulars. Any floorplans on this brochure are for illustrative purposes only and are not necessarily to scale.

Offices at: Chorlton, Didsbury, Disley, Hale, Glossop, Macclesfield, Manchester Deansgate, Manchester Whitworth Street, New Mills, Sale, Wilmslow and Withington

2 Union Road, New Mills, High Peak, Derbyshire, SK22 3ES

01663 767878

newmills@jordanfishwick.co.uk

www.jordanfishwick.co.uk