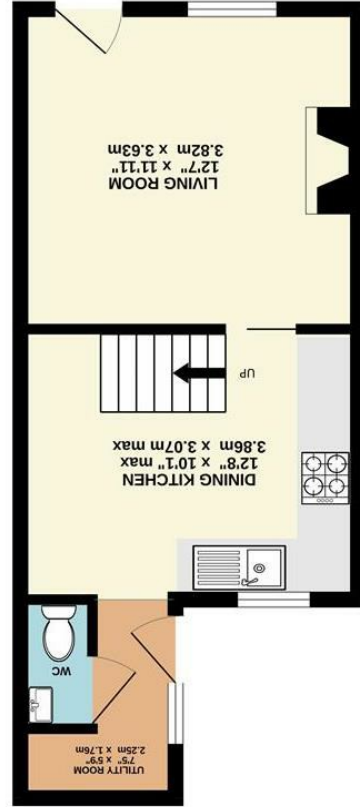


Fishwick are believed to be accurate but they are not guaranteed and do not form a contract. Neither Jordan Fishwick nor the vendor or lessor accept any responsibility in respect of these particulars, which are not intended to be statements or representations of fact and any intending purchaser or lessee must satisfy himself by inspection or otherwise as to the correctness of each of the statements contained in these particulars. Any floorplans on this brochure are for illustrative purposes only and are not necessarily to scale.

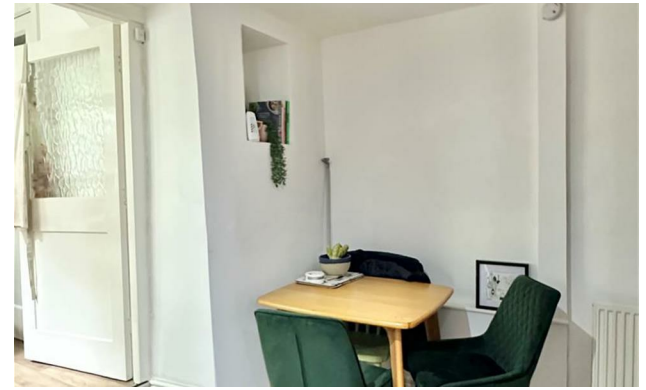
14 Market Street, Stockport, Cheshire, SK12 2AA

Whilst every attempt has been made to ensure the accuracy of the floorplans contained here, measurement of doors, windows, doors and any other items are approximate and no responsibility is taken for any errors. Readers, owners and any other parties are requested to verify the measurements and to be satisfied as to their own requirements. The floorplans are provided for illustrative purposes only and should be used as such by any prospective purchaser. The actual appearance and appearance shown here may vary and no guarantee, as to their quantity or accuracy can be given. Made with Mapbox CO2024



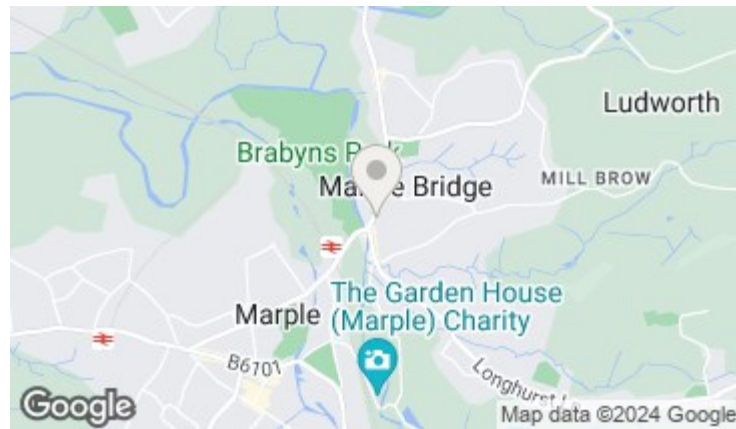
61 Lower Fold, Marple Bridge, Stockport, SK6 5DU

£1,025



The Property

Located in the heart of desirable Marple Bridge, with its array of shops, pubs and amenities, a stone built two bedroom mid terraced property. Set back from the road and boasting a generous rear garden, pvc double glazing and gas central heating. Comprising: living room, dining kitchen, utility porch, ground floor wc, two first floor bedrooms and a bathroom. Available beginning of August and Unfurnished.



- Central Marple Bridge Location
- Ideal For All Amenities
- Stone Built Mid Terrace
- Two Bedrooms
- Large Garden
- Pvc Double Glazing and Gas Central Heating
- Available Beginning of August
- Un-Furnished
- Rear Utility Area and Ground Floor WC

Postcode - SK6 5DU
EPC Rating - D
Local Authority - Stockport
Council Tax - C

