





£2,100 PCM

Features

- Located in the Heart of Hale Barns
- Executive Three Bedroom Penthouse Apartment
- Lift Access
- Undercroft Parking
- Immaculate Interior
- EPC Rating - B
- Council Tax Band F



***** AVAILABLE NOW *** EXCLUSIVE THREE BEDROOM PENTHOUSE APARTMENT IN THE HEART OF HALE BARNs.**

Only one of four this simply exquisite three bedroom two bathroom executive penthouse apartment enjoys stunning views from the living room over Ringway Golf Course and Manchester City Centre beyond. Offering every luxury, the accommodation briefly comprises: three bedrooms, master with Ensuite and a family/guest bathroom. Large open plan Lounge/ Luxury Kitchen/Diner with access to a spacious balcony offering an additional social area. The interior design is spacious, stunning and absolutely immaculate.

Other benefits include: Two allocated car parking spaces within the secure residents car park, luxury kitchen and bathroom fittings, Phone, data and aerial sockets, Oak flooring and carpets.



General information

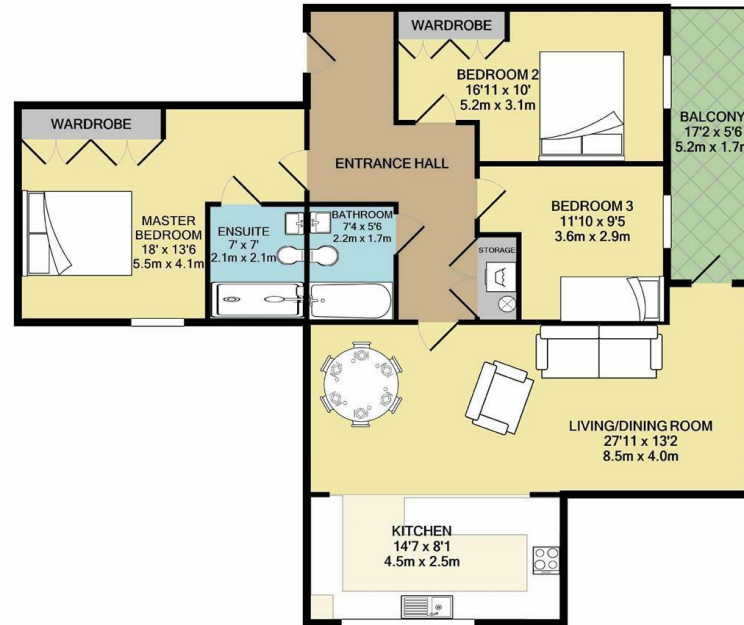
- Tax Band: F
- Sqft: 1200.00 sq ft
- Plot: acre(s)
- Bedrooms: 3
- Bathrooms: 2
- Postcode: WA15 8SP

This elegant apartment is located within the square, and has become the beating heart of Hale Barns. Call now to view - 0161 929 9797



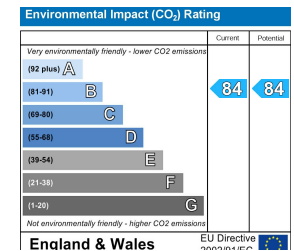
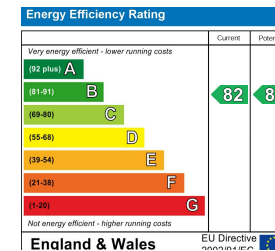






TOTAL APPROX. FLOOR AREA 1200 SQ.FT. (111.5 SQ.M.)
 Whilst every attempt has been made to ensure the accuracy of the floor plan contained here, measurements of doors, windows, rooms and any other items are approximate and no responsibility is taken for any error, omission, or mis-statement. This plan is for illustrative purposes only and should be used as such by any prospective purchaser. The services, systems and appliances shown have not been tested and no guarantee as to their operability or efficiency can be given.
 Made with Metropix ©2020

IMPORTANT: we would like to inform prospective purchasers that these sales particulars have been prepared as a general guide only. A detailed survey has not been carried out, nor the services, appliances and fittings tested. Room sizes should not be relied upon for furnishing purposes and are approximate. If floor plans are included, they are for guidance only and illustration purposes only and may not be to scale. If there are any important matters likely to affect your decision to buy, please contact us before viewing the property.



JORDAN FISHWICK
EXCLUSIVE

Jordan Fishwick
 172 Ashley Road, Altrincham, Cheshire, WA15 9SF
 0161 929 9797
 hale@jordanfishwick.co.uk
 www.jfexclusive.co.uk