



Jordan fishwick

36 Horton Road, Fallowfield, M14 7GB
£1,000 Per Calendar Month



The Property

View our Virtual Tour Here - https://youtu.be/LY1qrMPu_Ik

**** AVAILABLE SEPTEMBER **** A delightful two bedroom end terrace property, boasting stylish and modern decor throughout. The property is perfectly suited to a couple, small family or professional sharers and is ideally located within walking distance to local amenities and transport links to the City Centre. In brief, the property comprises; entrance hall, spacious front reception/dining room with space for a home office, great sized living area and a fitted kitchen with white goods. To the first floor are two double bedrooms complete with all furniture and a modern bathroom suite with shower cubicle. To the rear of the property is a decent sized yard that catches plenty of sunlight. Available fully furnished. To view and discuss the no deposit option please apply Withington 0161 438 2411.

EPC Rating - D

Horton Road Manchester M14 7GB

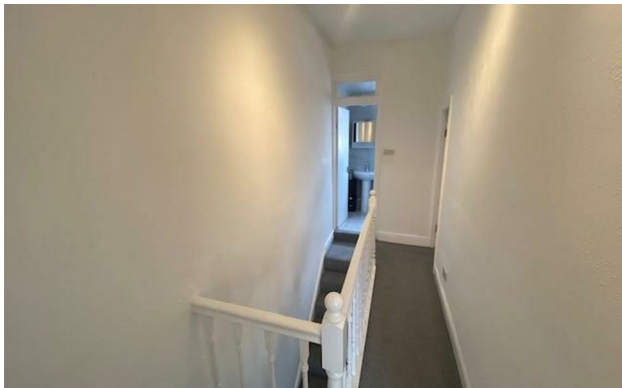
£1,000 Per Calendar Month



- Available September
- Two Double Bedrooms
- Two Reception Rooms
- Beautifully Decorated Throughout
- Fully Furnished
- Rear Garden
- Great Location
- Close to all Amenities
- On Street Parking



Energy Efficiency Rating		
	Current	Potential
Very energy efficient - lower running costs		
(92 plus) A		
(81-91) B		81
(69-80) C		
(55-68) D	57	
(39-54) E		
(21-38) F		
(1-20) G		
Not energy efficient - higher running costs		
England & Wales	EU Directive 2002/91/EC	





These particulars are believed to be accurate but they are not guaranteed and do not form a contract. Neither Jordan Fishwick nor the vendor or lessor accept any responsibility in respect of these particulars, which are not intended to be statements or representations of fact and any intending purchaser or lessee must satisfy himself by inspection or otherwise as to the correctness of each of the statements contained in these particulars. Any floorplans on this brochure are for illustrative purposes only and are not necessarily to scale.

Offices at: Offices at Chorlton, Didsbury, Disley, Hale, Glossop, Macclesfield, Manchester Deansgate, Manchester Whitworth Street, New Mills, Sale, Wilmslow and Withington