



*jordan fishwick*

**DIDSBURY**  
Westmorland Road



**Westmorland Road,  
Didsbury, M20 2TA**

**Guide Price £675,000**



## The Property

An impressive family home which has been significantly extended, with a superb south westerly facing garden backing onto open woodland and a great location which is within a short stroll of Didsbury Village. In outline :- Entrance porch, entrance hall with downstairs WC off, two separate reception rooms with double doors connecting, extended kitchen and utility on the ground floor, with the first floor giving way to three double bedrooms, two of which have direct access to a walk-out balcony and the generous family bathroom. Warmed by gas central heating, which is further complemented with uPVC double glazed windows. The property enjoys a pleasant outlook to the front, with gardens to the front and rear and a driveway providing parking for several vehicles. **\*\*No Onward Chain\*\***

## Directions

**M20 2TA**



- Impressive family home
- Significantly extended
- Delightful south westerly facing gardens
- Backing onto open woodland
- Three double bedrooms
- Lounge over 22ft & separate dining room
- Extended Kitchen
- Useful utility room & downstairs WC
- Quiet location close to the village
- No onward chain

Postcode - M20 2TA

EPC Rating - C

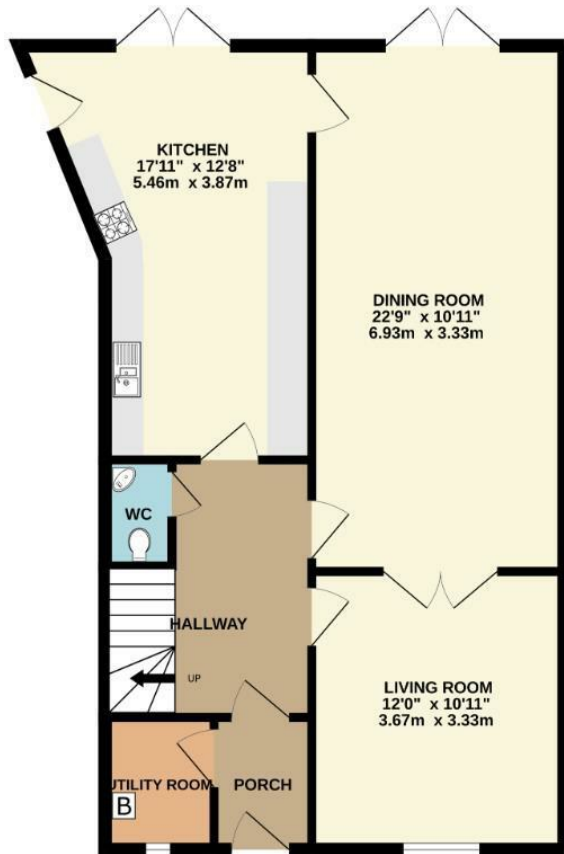
Floor Area - 1217.00 sq ft

Local Authority - Manchester City Council

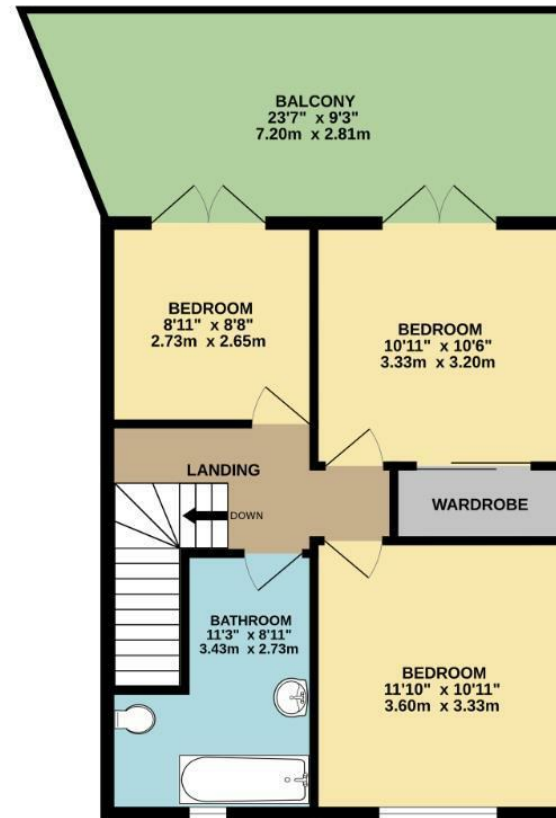
Council Tax - D



GROUND FLOOR  
709 sq.ft. (65.9 sq.m.) approx.



FIRST FLOOR  
508 sq.ft. (47.2 sq.m.) approx.



TOTAL FLOOR AREA: 1217 sq.ft. (113.1 sq.m.) approx.  
Measurements are approximate. Not to scale. Illustrative purposes only  
Made with Metropix ©2024



These particulars are believed to be accurate but they are not guaranteed and do not form a contract. Neither Jordan Fishwick nor the vendor or lessor accept any responsibility in respect of these particulars, which are not intended to be statements or representations of fact and any intending purchaser or lessee must satisfy himself by inspection or otherwise as to the correctness of each of the statements contained in these particulars. Any floorplans on this brochure are for illustrative purposes only and are not necessarily to scale.

Offices also at: Wilmslow, Macclesfield, Hale, Sale, Chorlton, Glossop, Manchester & Salford

757-759 Wilmslow Road, Didsbury Village, Manchester

0161 445 4480

didsbury@jordanfishwick.co.uk  
www.jordanfishwick.co.uk