



5 St Marys Court, Warrington, WA4 1DB

Investors Only. Rented Till February 2025 @ £900pcm

Welcome to St Marys Court in the charming town of Warrington! This delightful property boasts a spacious house with 1 reception room, perfect for entertaining guests or simply relaxing with your family. With 4 bedrooms, there's plenty of space for everyone to have their own sanctuary, and 2 bathrooms to ensure no morning queues.

Situated in a peaceful neighbourhood, this house offers a tranquil retreat from the hustle and bustle of everyday life. The property comes with parking for 1 vehicle, making it convenient for those with a car.

Whether you're looking for a new family home or a place to settle down, this house in St Marys Court is sure to tick all the boxes. Don't miss out on the opportunity to make this property your own and enjoy the comforts it has to offer.

Price £215,000

Viewing arrangements

Viewing strictly by appointment through the agent
245 Deansgate, Manchester, M3 4EN 0161 833 9499 opt 3

Entrance Hall

Cloak Room

Kitchen/Diner

15'9" x 9'4"

Living Room

15'0" x 13'5"

First Floor

Bedroom Two

14'11" x 8'9"

Bedroom Three

12'2" x 8'9"

Bedroom Four

8'7" x 6'3"

Bathroom

6'4" x 6'3"

Second Floor

Master Bedroom

20'7" x 11'11"

En-Suite

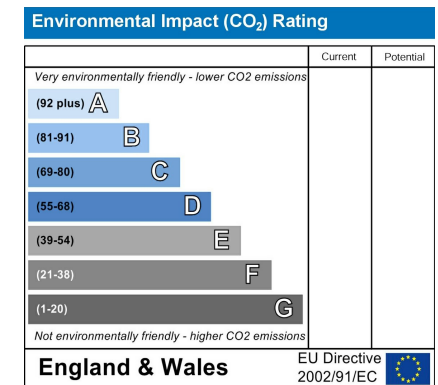
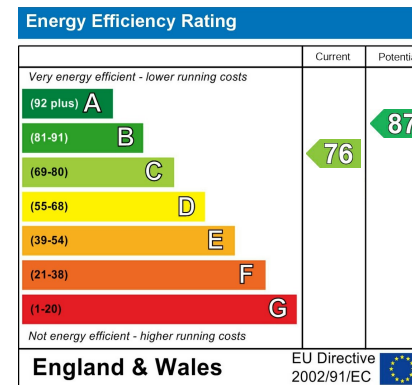
5'10" x 5'5"

Externally

Gardens and allocated parking space

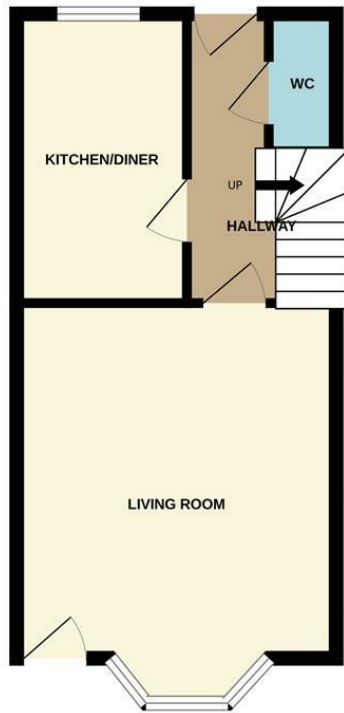
Estate Agents Act

The owner of this property is a partner of Jordan Fishwick LLP & Manchester Ltd





GROUND FLOOR



1ST FLOOR



2ND FLOOR



Measurements are approximate. Not to scale. Illustrative purposes only
Made with Metropix ©2024



These particulars are believed to be accurate but they are not guaranteed and do not form a contract. Neither Jordan Fishwick nor the vendor or lessor accept any responsibility in respect of these particulars, which are not intended to be statements or representations of fact and any intending purchaser or lessee must satisfy himself by inspection or otherwise as to the correctness of each of the statements contained in these particulars. Any floorplans on this brochure are for illustrative purposes only and are not necessarily to scale.

Offices at: Chorlton, Didsbury, Disley, Hale, Glossop, Macclesfield, Manchester Deansgate, Manchester Whitworth Street, New Mills, Sale, Wilmslow and Withington

245 Deansgate, Manchester, M3 4EN

0161 833 9499 opt 3

manchester@jordanfishwick.co.uk

www.jordanfishwick.co.uk

