

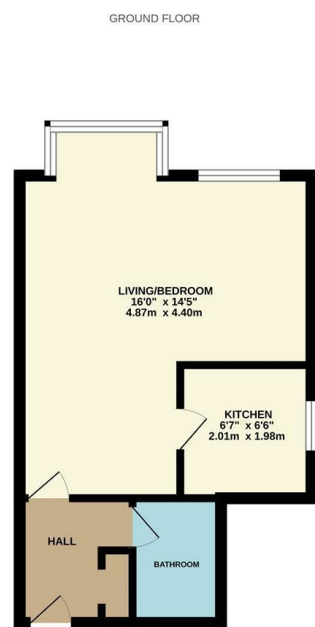


51 PINWOOD COURT BRACKENWOOD MEWS WILMSLOW SK9 2QQ

This is a ground floor studio apartment located on the ever popular Summerfield Estate in Wilmslow. A short drive from Wilmslow centre, offering a wide range of amenities, including a number of local shopping facilities, bars, restaurants. Wilmslow and Handforth train station, both within a five minute drive, offer a direct service to Manchester City centre.

Access is via a secure communal entrance, once inside the property the accommodation comprises: an entrance hallway with a useful storage area. Access to a modern shower room with large walk-in shower enclosure. There is a large open plan living room/bedroom area which receives plenty natural light from the large bay window creating an airy feel. There is also a modern kitchen located off the living space. To the exterior of the property there is a well maintained communal garden and residents parking.

This property provides an attractive and affordable option for a buyer and also an excellent investment opportunity for a buy to let landlord.



Measurements are approximate. See us again. Specialist purposes only. Made with Bentley CAD.



- Attractive Accommodation
- One Bedroom
- Studio
- Ground Floor Accommodation
- Off road parking space
- Desirable location
- Ideal first time buy or buy to let

Energy Efficiency Rating		Environmental Impact (CO ₂) Rating	
Current	Potential	Current	Potential
Very energy efficient - lower running costs		Very environmentally friendly - lower CO ₂ emissions	
(92 plus) A		(92 plus) A	
(81-91) B		(81-91) B	
(69-80) C		(69-80) C	
(55-68) D	56	(55-68) D	
(39-54) E		(39-54) E	
(21-38) F		(21-38) F	
(1-20) G		(1-20) G	
Not energy efficient - higher running costs		Not environmentally friendly - higher CO ₂ emissions	
England & Wales		England & Wales	
EU Directive 2002/91/EC		EU Directive 2002/91/EC	