



*jordan fishwick*

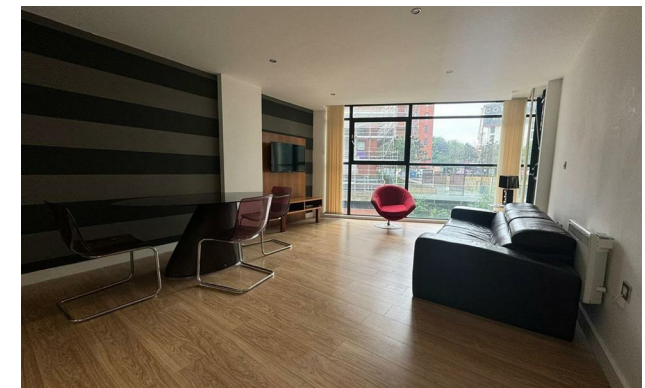
Apt 12 Hill Quays (Block B), 8 Commercial  
£1,300 Per Calendar Month





## Hill Quays (Block B) Manchester M15 4QW

£1,300 Per Calendar Month



### The Property

Available Early August! This 2nd floor luxury apartment is located in Block B Hill Quays. Hill Quays benefits from an impressive glass atrium which lights the internal corridors and ornamental garden. Entrance hall with ample storage space, spacious living room with floor to ceiling window and open to the kitchen. This comes with white high gloss kitchen and fitted appliances, dishwasher, washer/dryer, oven and hob. Two double sized bedrooms with the master having full en-suite shower and separate family bathroom with tiled floor and chrome heated towel rail. The property comes furnished. No Parking. Hill Quays also benefits from the use of a private gymnasium, sauna and steam room. Tax Band E. EPC Rating E.

\*VIDEO/ PHOTO OFFERS NOT ACCEPTED - PLEASE BOOK AN IN PERSON VIEWING\*



- Available Early August
- Two Bedroom
- Balcony
- Two Bathrooms
- Tax Band E
- EPC Rating E
- No Parking
- Close to Universities



Energy Efficiency Rating		
	Current	Potential
Very energy efficient - lower running costs		
(92 plus) <b>A</b>		
(81-91) <b>B</b>		
(69-80) <b>C</b>		<b>73</b>
(55-68) <b>D</b>		
(39-54) <b>E</b>	<b>49</b>	
(21-38) <b>F</b>		
(1-20) <b>G</b>		
Not energy efficient - higher running costs		
<b>England &amp; Wales</b>	EU Directive 2002/91/EC	





These particulars are believed to be accurate but they are not guaranteed and do not form a contract. Neither Jordan Fishwick nor the vendor or lessor accept any responsibility in respect of these particulars, which are not intended to be statements or representations of fact and any intending purchaser or lessee must satisfy himself by inspection or otherwise as to the correctness of each of the statements contained in these particulars. Any floorplans on this brochure are for illustrative purposes only and are not necessarily to scale.

Offices at: Offices at Chorlton, Didsbury, Disley, Hale, Glossop, Macclesfield, Manchester Deansgate, Manchester Whitworth Street, New Mills, Sale, Wilmslow and Withington