



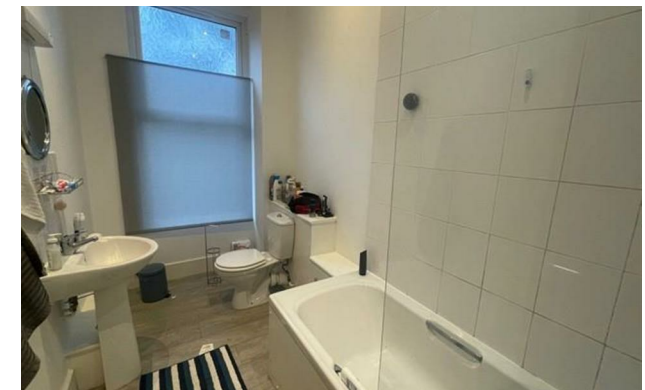
*Jordan fishwick*

380 , M20 3NA  
£3,458 Per Calendar Month



**Manchester M20 3NA**

**£3,458 Per Calendar Month**



### The Property

\*\*\* AVAILABLE JULY 2022 \*\*\* £114.00 PPPW \*\*\* CAPPED INTERNET INCLUDED \*\*\* A seven double bedroom student property for the academic year 2022/23. This duplex apartment is ideally situated in the heart of Fallowfield within walking distance of local bars, restaurants and a stone throw of the closest bus stop to the City Centre and Universities. In brief, the property comprises; entrance hall, spacious lounge with bay window, separate large kitchen/diner, two double bedrooms and a bathroom. To the upper floor are a further five double bedrooms. Fully furnished. To view apply Withington 0161 438 2411.

EPC Rating - D

- Available July 2022
- £114.00 PPPW
- Seven Double Bedrooms
- Very Large Kitchen/ Lounge
- Duplex Apartment
- Good Transport Links
- Fully Furnished



Energy Efficiency Rating		
	Current	Potential
Very energy efficient - lower running costs		
(92 plus) <b>A</b>		
(81-91) <b>B</b>		80
(69-80) <b>C</b>		
(55-68) <b>D</b>	60	
(39-54) <b>E</b>		
(21-38) <b>F</b>		
(1-20) <b>G</b>		
Not energy efficient - higher running costs		
<b>England &amp; Wales</b>	EU Directive 2002/91/EC	





These particulars are believed to be accurate but they are not guaranteed and do not form a contract. Neither Jordan Fishwick nor the vendor or lessor accept any responsibility in respect of these particulars, which are not intended to be statements or representations of fact and any intending purchaser or lessee must satisfy himself by inspection or otherwise as to the correctness of each of the statements contained in these particulars. Any floorplans on this brochure are for illustrative purposes only and are not necessarily to scale.

Offices at: Offices at Chorlton, Didsbury, Disley, Hale, Glossop, Macclesfield, Manchester Deansgate, Manchester Whitworth Street, New Mills, Sale, Wilmslow and Withington