



Jordan fishwick

DIDSBURY
Northen Grove



Northern Grove, Didsbury, M20 2NN

Offers Over £825,000



The Property

A MAGNIFICENT EXTENDED VICTORIAN semi detached family home with IMMACULATE PRESENTATION throughout with useful lower ground floor cellar rooms and retaining many ORIGINAL FEATURES, located in the HEART OF WEST DIDSBURY VILLAGE. 2411 sq ft. The accommodation reveals; entrance porch, entrance hallway, living room with a feature fireplace, stylish kitchen/diner with quartz worktops opening into the extended family room with underfloor heating and bifold doors leading to the rear garden, a utility room and downstairs WC. To the first floor: Two double bedrooms and luxury family bathroom, whilst to the second floor an additional bedroom and master bedroom suite with en suite dressing and shower room. The basement boasts an impressive living area with fitted kitchen, bathroom, and storage cupboard. Externally there is off road parking to the front with EV charging point and a low maintenance private south easterly facing garden to the rear.

Directions

M20 2NN



- Period semi detached family home
- Open plan family kitchen with bifold doors
- Four double bedrooms
- Master bed with en suite dressing & shower room
- Off road parking with EV charging point
- Located off Burton Road
- Converted cellars

Postcode - M20 2NN

EPC Rating - E

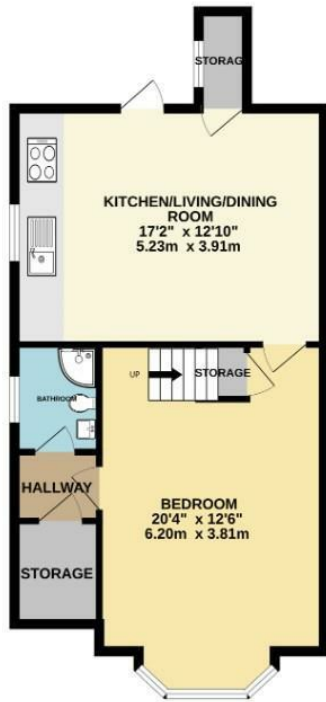
Floor Area - 2411.00 sq ft

Local Authority - Manchester City Council

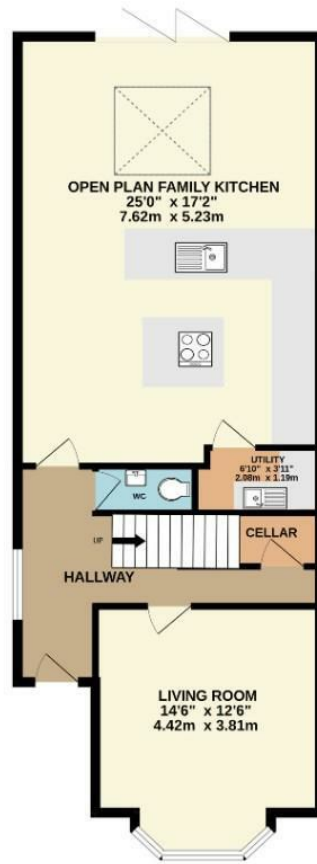
Council Tax - D



BASEMENT
595 sq.ft. (55.3 sq.m.) approx.



GROUND FLOOR
779 sq.ft. (72.3 sq.m.) approx.



1ST FLOOR
527 sq.ft. (49.0 sq.m.) approx.



2ND FLOOR
510 sq.ft. (47.4 sq.m.) approx.



TOTAL FLOOR AREA : 2411 sq.ft. (224.0 sq.m.) approx.
Measurements are approximate. Not to scale. Illustrative purposes only
Made with Metropix ©2024



These particulars are believed to be accurate but they are not guaranteed and do not form a contract. Neither Jordan Fishwick nor the vendor or lessor accept any responsibility in respect of these particulars, which are not intended to be statements or representations of fact and any intending purchaser or lessee must satisfy himself by inspection or otherwise as to the correctness of each of the statements contained in these particulars. Any floorplans on this brochure are for illustrative purposes only and are not necessarily to scale.

Offices also at: Wilmslow, Macclesfield, Hale, Sale, Chorlton, Glossop, Manchester & Salford

757-759 Wilmslow Road, Didsbury Village, Manchester

0161 445 4480

didsbury@jordanfishwick.co.uk
www.jordanfishwick.co.uk