





# 9 Hawthorn Lane, Sale, M33 5NN

This property is for sale by Modern Method of Auction powered by iamsold LTD - Starting Bid £325,000 + Reservation Fee.

Traditional three bed semi detached property with enclosed garden to the rear and large private driveway - this home has much potential and offers spacious family accommodation.

The property is within easy walking distance of Ashton-on-Mersey Village and is within the catchment area of the fantastic local schools including the ever popular Ashton-on-Mersey Secondary School.

Excellent transport links are also nearby including motorway access as well as the metrolink.

The property briefly comprises; porch, entrance hallway, open plan living/ dining room, conservatory, downstairs WC and kitchen. To the first floor there are three bedrooms and a family bathroom with four piece suite.

Externally, the property has an enclosed garden to the rear, and larger than average driveway with detached garage. CALL NOW TO VIEW!

## £325,000 By Auction

### Viewing arrangements

Viewing strictly by appointment through the agent

95-97 School Road, Sale, Cheshire, M33 7XA 0161 962 2828

### Auctioneer Comments

This property is for sale by the Modern Method of Auction. Should you view, offer or bid on the property, your information will be shared with the Auctioneer, iamsold Limited. This method of auction requires both parties to complete the transaction within 56 days of the draft contract for sale being received by the buyers solicitor (for standard Grade 1 properties). This additional time allows buyers to proceed with mortgage finance (subject to lending criteria, affordability and survey). The buyer is required to sign a reservation agreement and make payment of a non-refundable Reservation Fee. This being 4.5% of the purchase price including VAT, subject to a minimum of £6,600.00 including VAT. The Reservation Fee is paid in addition to purchase price and will be considered as part of the chargeable consideration for the property in the calculation for stamp duty liability. Buyers will be required to go through an identification verification process with iamsold and provide proof of how the purchase would be funded. This property has a Buyer Information Pack which is a collection of documents in relation to the property. The documents may not tell you everything you need to know about the property, so you are required to complete your own due diligence before bidding. A sample copy of the Reservation Agreement and terms and conditions are also

contained within this pack. The buyer will also make payment of £300 including VAT towards the preparation cost of the pack, where it has been provided by iamsold. The property is subject to an undisclosed Reserve Price with both the Reserve Price and Starting Bid being subject to change.

### Referral Arrangement

The Partner Agent and Auctioneer may recommend the services of third parties to you. Whilst these services are recommended as it is believed they will be of benefit; you are under no obligation to use any of these services and you should always consider your options before services are accepted. Where services are accepted the Auctioneer or Partner Agent may receive payment for the recommendation and you will be informed of any referral arrangement and payment prior to any services being taken by you.



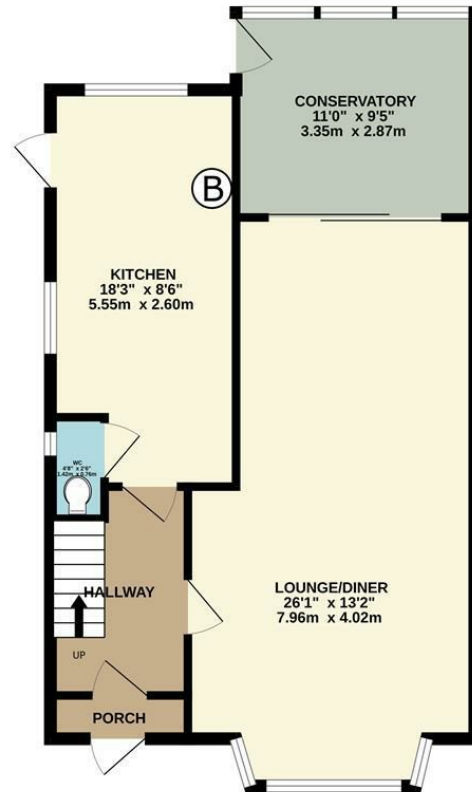
Energy Efficiency Rating		
	Current	Potential
<i>Very energy efficient - lower running costs</i>		
(92 plus) <b>A</b>		
(81-91) <b>B</b>		
(69-80) <b>C</b>		
(55-68) <b>D</b>		
(39-54) <b>E</b>		
(21-38) <b>F</b>		
(1-20) <b>G</b>		
<i>Not energy efficient - higher running costs</i>		
<b>England &amp; Wales</b>	EU Directive 2002/91/EC	

Environmental Impact (CO <sub>2</sub> ) Rating		
	Current	Potential
<i>Very environmentally friendly - lower CO<sub>2</sub> emissions</i>		
(92 plus) <b>A</b>		
(81-91) <b>B</b>		
(69-80) <b>C</b>		
(55-68) <b>D</b>		
(39-54) <b>E</b>		
(21-38) <b>F</b>		
(1-20) <b>G</b>		
<i>Not environmentally friendly - higher CO<sub>2</sub> emissions</i>		
<b>England &amp; Wales</b>	EU Directive 2002/91/EC	

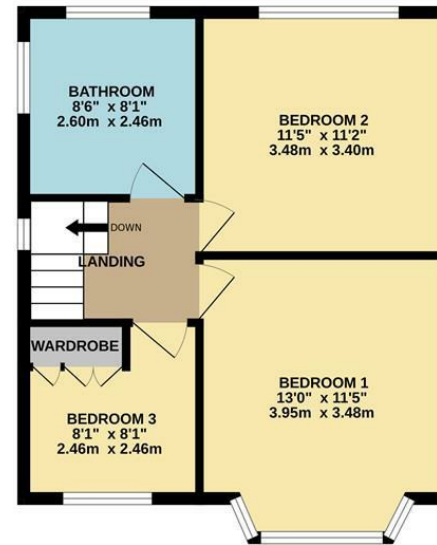




GROUND FLOOR  
638 sq.ft. (59.3 sq.m.) approx.



1ST FLOOR  
449 sq.ft. (41.7 sq.m.) approx.



TOTAL FLOOR AREA: 1087 sq.ft. (101.0 sq.m.) approx.  
Measurements are approximate. Not to scale. Illustrative purposes only.  
Made with Metropix ©2024



These particulars are believed to be accurate but they are not guaranteed and do not form a contract. Neither Jordan Fishwick nor the vendor or lessor accept any responsibility in respect of these particulars, which are not intended to be statements or representations of fact and any intending purchaser or lessee must satisfy himself by inspection or otherwise as to the correctness of each of the statements contained in these particulars. Any floorplans on this brochure are for illustrative purposes only and are not necessarily to scale.

Offices at: Chorlton, Didsbury, Disley, Hale, Glossop, Macclesfield, Manchester Deansgate, Manchester Whitworth Street, New Mills, Sale, Wilmslow and Withington

95-97 School Road, Sale, Cheshire, M33 7XA

0161 962 2828

sale@jordanfishwick.co.uk  
www.jordanfishwick.co.uk



