



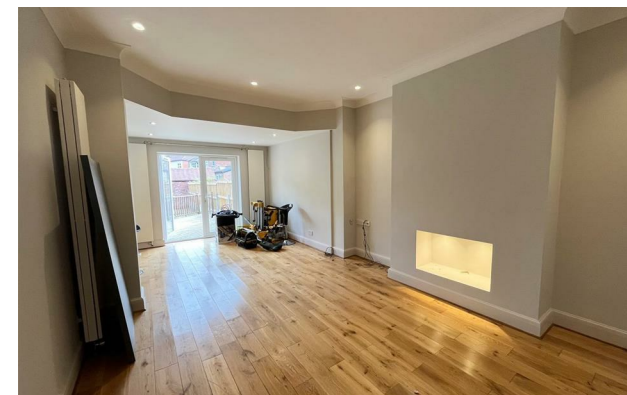
*jordan fishwick*

309 Bramhall Lane, SK3 8TE  
PCM £2,300 PCM



## Bramhall Lane Stockport SK3 8TE

£2,300 PCM



AVAILABLE EARLY SEPTEMBER PART FURNISHED - VIEWING ESSENTIAL TO APPRECIATE

This extremely spacious three bedroom semi detached is located to the South of Stockport Town Centre on the borders of Davenport Village. With the final touches of a major refurbishment being completed this fabulous family home is sure to be a popular choice for the professional family.

With gated off road parking for up to 5 cars and a sunny rear garden with patio and decked area along with a converted carpeted loft room with velux window this immaculate property offers a wealth of quality living accommodation.

Entrance porch, entrance hall with storage, downstairs WC, lounge with wood laminate effect floor and bay window, open plan family / dining room area with doors to rear garden leading to modern fitted kitchen with electric hob and oven, dishwasher, fridge freezer, washing machine and separate dryer. To the first floor two good sized double bedrooms, third spacious single bedroom, family bathroom with separate shower cubicle, converted loft with velux window.

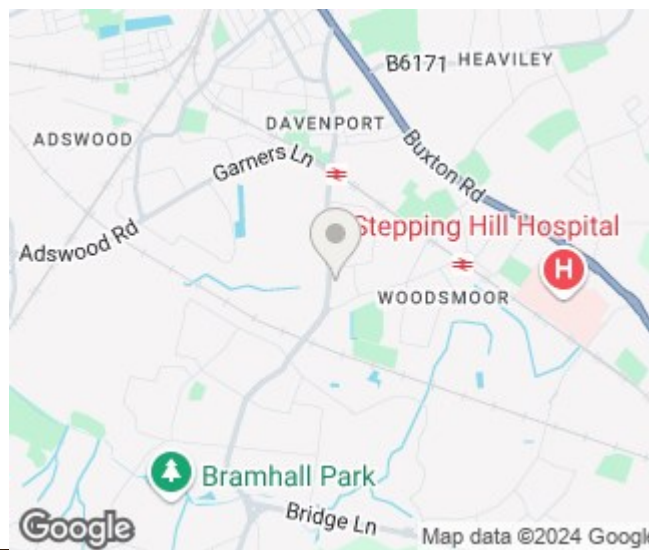
Gated off road parking to the front, attractive rear garden with patio, decked area, further gated parking for 2 cars with carport. Contact Wilmslow 01625 536300 £2300.00pcm


COUNCIL TAX D

EPC D



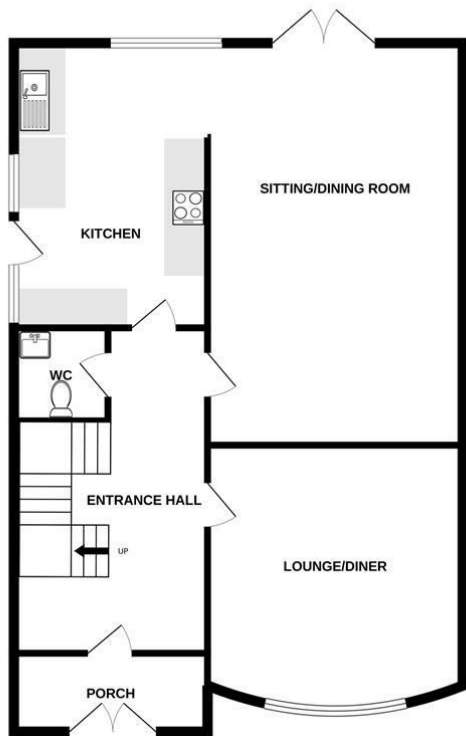
- EXCELLENT STANDARD THROUGHOUT
- SPACIOUS INTERIOR
- GOOD SIZED REAR GARDEN
- THREE BEDROOMS PLUS CONVERTED LOFT ROOM
- GATED PARKING
- EPC D
- COUNCIL TAX D



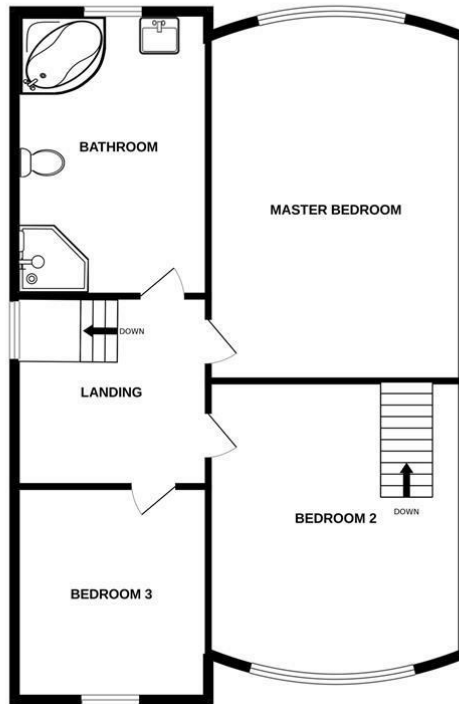
Energy Efficiency Rating		
	Current	Potential
Very energy efficient - lower running costs		
(92 plus) <b>A</b>		
(81-91) <b>B</b>		
(69-80) <b>C</b>		
(55-68) <b>D</b>	<b>64</b>	<b>70</b>
(39-54) <b>E</b>		
(21-38) <b>F</b>		
(1-20) <b>G</b>		
Not energy efficient - higher running costs		
<b>England &amp; Wales</b>	EU Directive 2002/91/EC 	



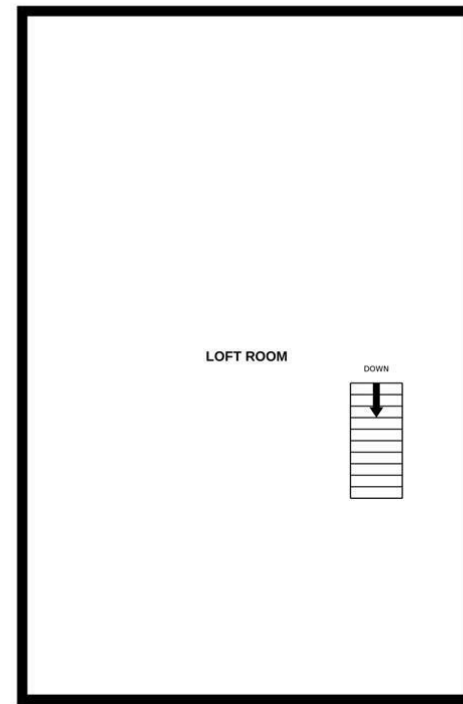
GROUND FLOOR



1ST FLOOR



2ND FLOOR



Measurements are approximate. Not to scale. Illustrative purposes only  
 Made with Metropix ©2024



These particulars are believed to be accurate but they are not guaranteed and do not form a contract. Neither Jordan Fishwick nor the vendor or lessor accept any responsibility in respect of these particulars, which are not intended to be statements or representations of fact and any intending purchaser or lessee must satisfy himself by inspection or otherwise as to the correctness of each of the statements contained in these particulars. Any floorplans on this brochure are for illustrative purposes only and are not necessarily to scale.

Offices at: Chorlton, Didsbury, Disley, Hale, Glossop, Macclesfield, Manchester Deansgate, Manchester Whitworth Street, New Mills, Sale, Wilmslow and Withington

01625 536300

wilmslow@jordanfishwick.co.uk  
 www.jordanfishwick.co.uk