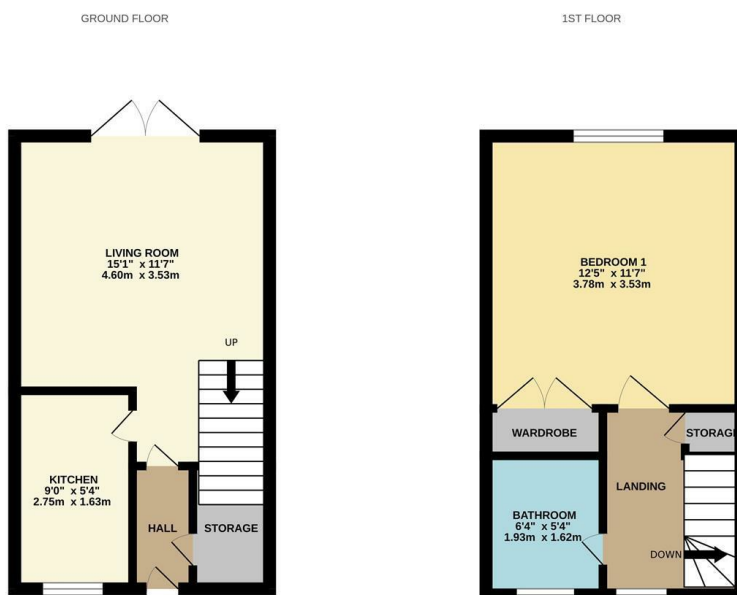


jordan fishwick

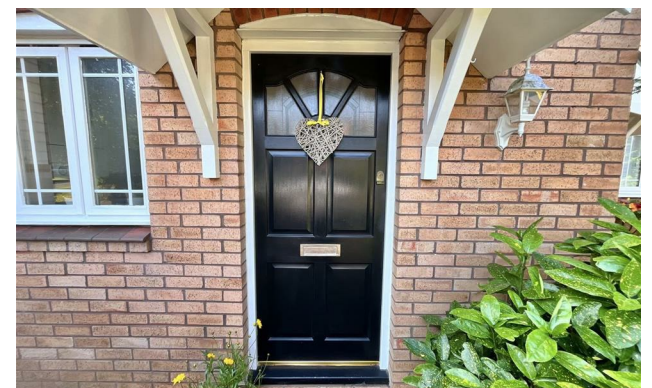
3 CHADWICK CLOSE WILMSLOW SK9 2GL
Guide Price £239,950

3 CHADWICK CLOSE WILMSLOW SK9 2GL

NO ONWARD CHAIN... A fantastic one bedroom mews property situated on a lovely cul-de-sac among the ever popular Jones Homes 'Villas' development. Inside this light and well proportioned property the accommodation comprises briefly: an entrance hallway, lounge with French doors on to the rear garden, fitted kitchen with space for appliances and to the first floor there is a good size master bedroom and fitted bathroom with a traditional white suite. This charming property is warmed by gas central heating and has double glazing. Private gated access to a good sized garden to the rear laid mainly to lawn, and a driveway to the front offering off road parking. Viewing is highly recommended.



Measurements are approximate. Not to scale. Illustrative purposes only. Made with Metrepx 12021.



- Mews property
- One bedroom
- Modern Kitchen
- Garden
- Driveway
- No chain
- Gas central heating
- Double glazed

