



Jordan fishwick

Apt 1 72 Portland Street, Manchester, M1
£1,200 Per Calendar Month



72 Portland Street M1 4GU

£1,200 Per Calendar Month



The Property

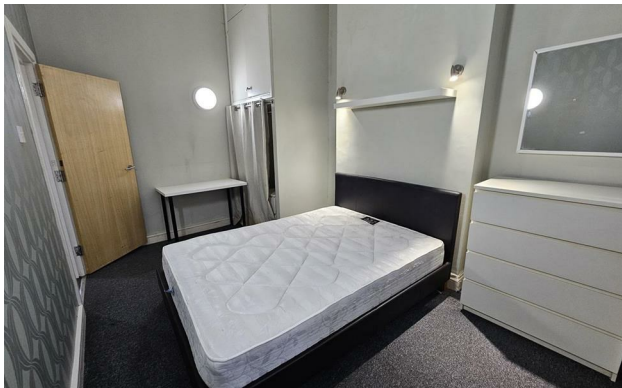
Available Early August. This first floor two bedroom apartment situated in the heart of the city boasts original period features with high ceilings and exposed beams. Accommodation comprises of entrance hall, spacious open-plan living room/ kitchen with appliances, two double bedrooms and three piece bathroom suite with shower attachment. Furnished. No parking. Located only a short walk from Market Street with it's wealth of shops and restaurants, Piccadilly Gardens, Piccadilly Station and Deansgate. 12 month minimum contracts only. Tax Band D. EPC Rating E. NO parking/ NO pets.

VIDEO/ PHOTO OFFERS NOT ACCEPTED - PLEASE CALL TO BOOK AN IN PERSON VIEWING

- Available Early August
- First Floor - Two Bedrooms
- Furnished
- Central location
- EPC Rating E
- Council Tax Band D
- No Parking
- Close to Piccadilly
- No Pets



Energy Efficiency Rating		
	Current	Potential
Very energy efficient - lower running costs		
(92 plus) A		
(81-91) B		
(69-80) C		72
(55-68) D		
(39-54) E	41	
(21-38) F		
(1-20) G		
Not energy efficient - higher running costs		
England & Wales	EU Directive 2002/91/EC	





These particulars are believed to be accurate but they are not guaranteed and do not form a contract. Neither Jordan Fishwick nor the vendor or lessor accept any responsibility in respect of these particulars, which are not intended to be statements or representations of fact and any intending purchaser or lessee must satisfy himself by inspection or otherwise as to the correctness of each of the statements contained in these particulars. Any floorplans on this brochure are for illustrative purposes only and are not necessarily to scale.

Offices at: Offices at Chorlton, Didsbury, Disley, Hale, Glossop, Macclesfield, Manchester Deansgate, Manchester Whitworth Street, New Mills, Sale, Wilmslow and Withington