



jordan fishwick

Station Road New Mills High Peak

Station Road New Mills High Peak SK22 3JB

£125,000



The Property

Nestled in the heart of Station Road, New Mills, High Peak, this charming terraced house offers a perfect blend of comfort and convenience. Recently refurbished, this property boasts one bedroom, ideal for a cosy retreat or a starter home.

As you step inside, you are greeted by a welcoming living/kitchen room with laminate flooring, creating a modern and easy-to-maintain space. The staircase leads you to the first floor where you'll find the well-appointed shower room off the bedroom with a white suite.

The location of this property is truly unbeatable offering stunning forward views over The Torrs. Whether you're looking for a holiday let to unwind and relax or a first home to start your journey, this property caters to all your needs. Its proximity to the train station and the array of shops in New Mills makes everyday living a breeze.

Offering no onward chain, don't miss out on the opportunity to own this delightful little property.



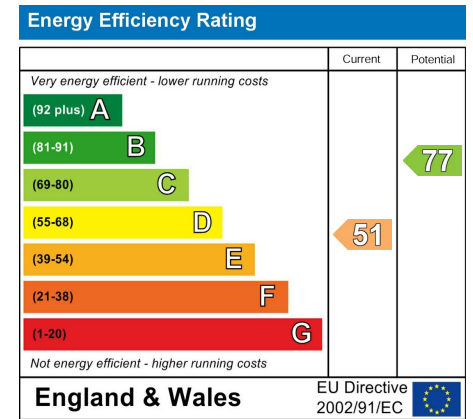
- Convenient Location for New Mills Amenities
- Great Holiday Let or First Home
- Refurbished Throughout
- One Bedroom and Combined Kitchen/Living Space
- Stunning Forward Views Over The Torrs
- Energy Rating E Council Tax A
- No Onward Chain
- Low Running Costs

Postcode SK22 3JB

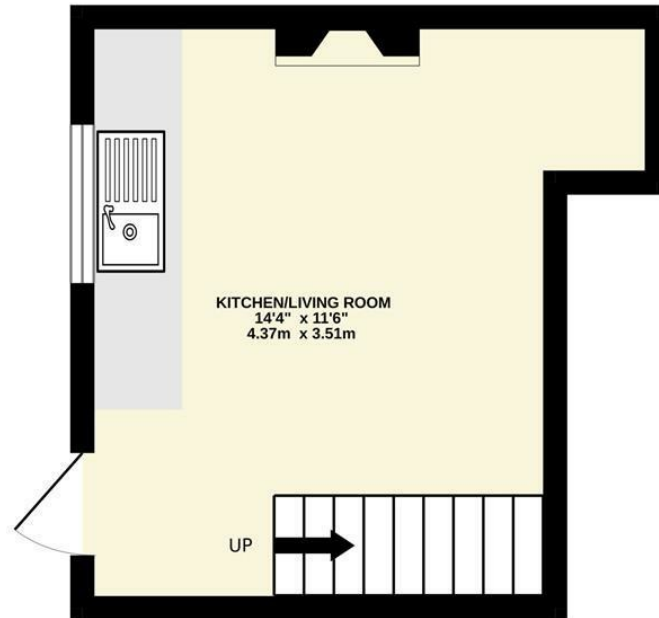
EPC Rating E

Local Authority High Peak Borough

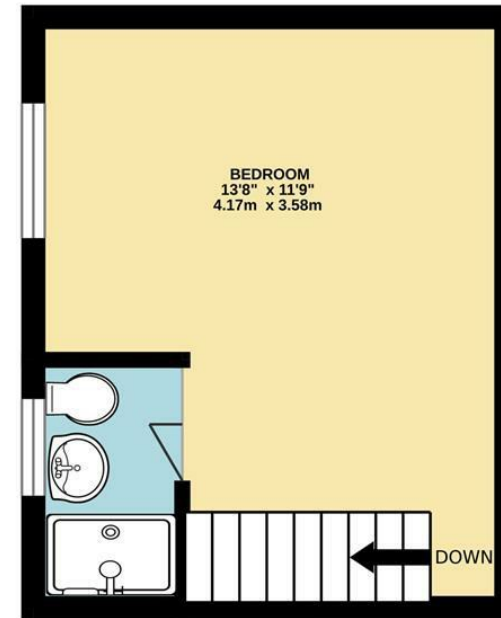
Council Tax A



GROUND FLOOR



FIRST FLOOR



Whilst every attempt has been made to ensure the accuracy of the floorplan contained here, measurements of doors, windows, rooms and any other items are approximate and no responsibility is taken for any error, omission or mis-statement. This plan is for illustrative purposes only and should be used as such by any prospective purchaser. The services, systems and appliances shown have not been tested and no guarantee as to their operability or efficiency can be given.
Made with Metropix ©2024



These particulars are believed to be accurate but they are not guaranteed and do not form a contract. Neither Jordan Fishwick nor the vendor or lessor accept any responsibility in respect of these particulars, which are not intended to be statements or representations of fact and any intending purchaser or lessee must satisfy himself by inspection or otherwise as to the correctness of each of the statements contained in these particulars. Any floorplans on this brochure are for illustrative purposes only and are not necessarily to scale.

Offices at: Chorlton, Didsbury, Disley, Hale, Glossop, Macclesfield, Manchester Deansgate, Manchester Whitworth Street, New Mills, Sale, Wilmslow and Withington

2 Union Road, New Mills, High Peak, Derbyshire, SK22 3ES

01663 767878

newmills@jordanfishwick.co.uk

www.jordanfishwick.co.uk