



jordan fishwick

Buxton Road Disley Stockport

Buxton Road Disley Stockport SK12 2HA

£270,000



The Property

Over FOUR FLOORS of spacious and versatile accommodation in the heart of Disley Village. Suitable for first time buyers or those looking for a generous, character family home. Well presented throughout, this larger style brick-built mid terraced home comprises: entrance porch/hall, living room and sitting room, lower ground floor breakfast kitchen with central island, dining room and wc, two first floor double bedrooms, bathroom with white suite and a loft conversion. Pvc double glazing, gas central heating, walled frontage, enclosed rear garden and an external electric car charger point! Viewing highly recommended



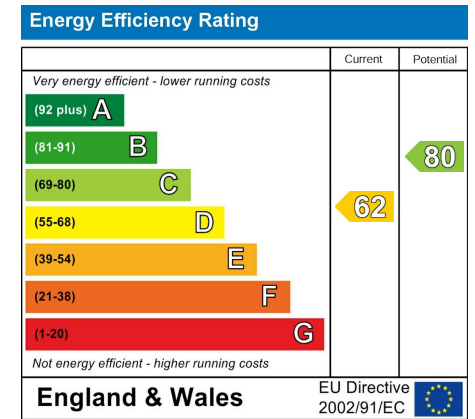
- Two Bedrooms Plus Loft Room
- Arranged Over Four Floors
- Convenient Central Disley Location
- Character Brick Built Mid Terraced
- Kitchen with Island Plus Dining Room
- Living Room and Sitting Room
- Enclosed Garden and Frontage
- Electric Car Charging Point
- Pvc Double Glazing and Gas Central Heating

Postcode SK12 2HA

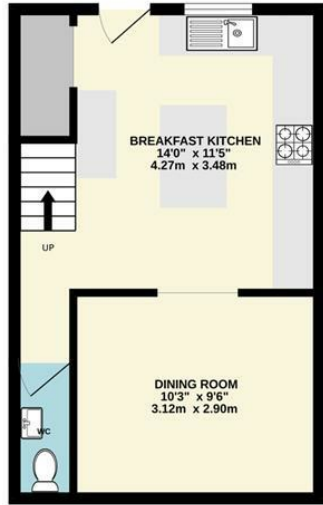
EPC Rating D

Local Authority Cheshire East

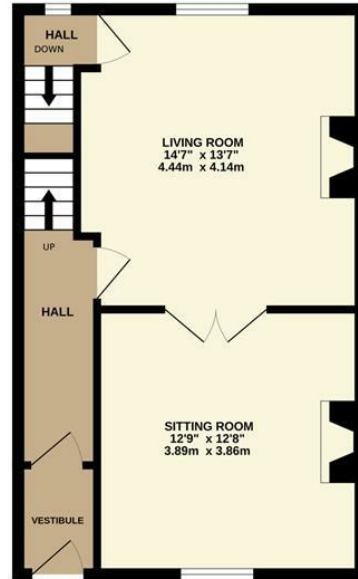
Council Tax B



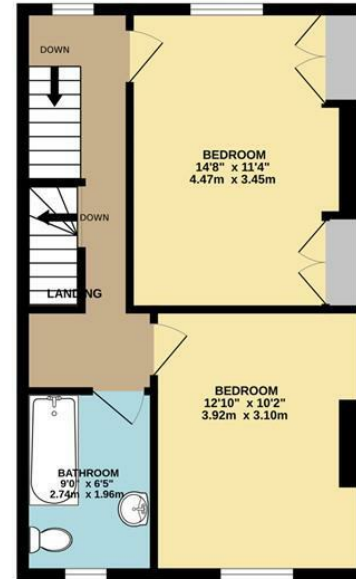
LOWER GROUND FLOOR



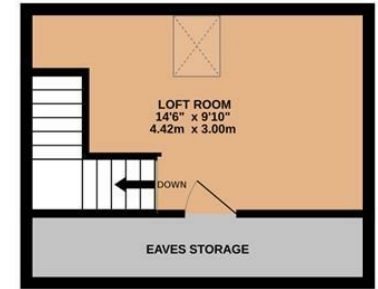
GROUND FLOOR



1ST FLOOR



2ND FLOOR



Whilst every attempt has been made to ensure the accuracy of the floorplan contained here, measurements of doors, windows, rooms and any other items are approximate and no responsibility is taken for any error, omission or mis-statement. This plan is for illustrative purposes only and should be used as such by any prospective purchaser. The services, systems and appliances shown have not been tested and no guarantee as to their operability or efficiency can be given.
Made with Metropix ©2024



These particulars are believed to be accurate but they are not guaranteed and do not form a contract. Neither Jordan Fishwick nor the vendor or lessor accept any responsibility in respect of these particulars, which are not intended to be statements or representations of fact and any intending purchaser or lessee must satisfy himself by inspection or otherwise as to the correctness of each of the statements contained in these particulars. Any floorplans on this brochure are for illustrative purposes only and are not necessarily to scale.

Offices at: Chorlton, Didsbury, Disley, Hale, Glossop, Macclesfield, Manchester Deansgate, Manchester Whitworth Street, New Mills, Sale, Wilmslow and Withington

14 Market Street, Disley, Cheshire, SK12 2AA

01663 76 78 78

disley@jordanfishwick.co.uk

www.jordanfishwick.co.uk