



*jordan fishwick*

Apt 15 The Frame, 2a The Waterfront, M11  
£900 Per Calendar Month



## The Frame Sports City M11 4BX

£900 Per Calendar Month



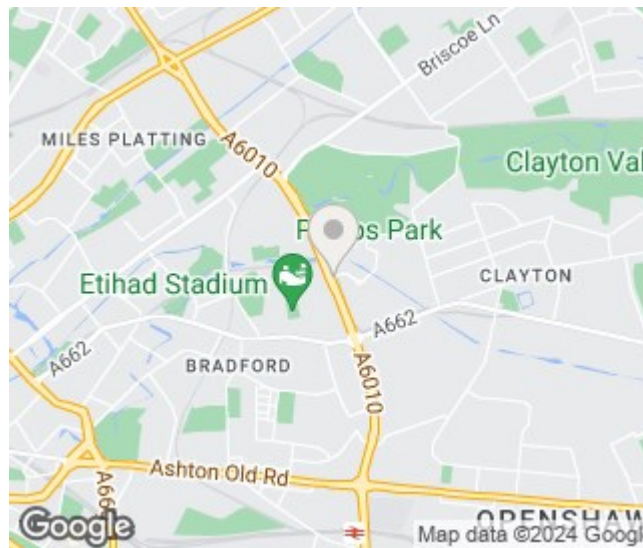
### The Property


**\*PLEASE NOTE - 6 MONTH TENANCY ONLY\***

Available Early August. This larger than average 1st floor one bedroom apartment is located in Sports City and offers excellent accommodation for the discerning tenant. Entrance hall with storage, large living room with Juliet balcony, open through to the modern kitchen with oven, hob, extractor and fridge/freezer appliances. The double bedroom has a fitted wardrobe and the shower room has part tiled walls with corner shower cubicle. Furnished. Parking included. Council Tax Band B. EPC RATING C. PROFESSIONALS ONLY!

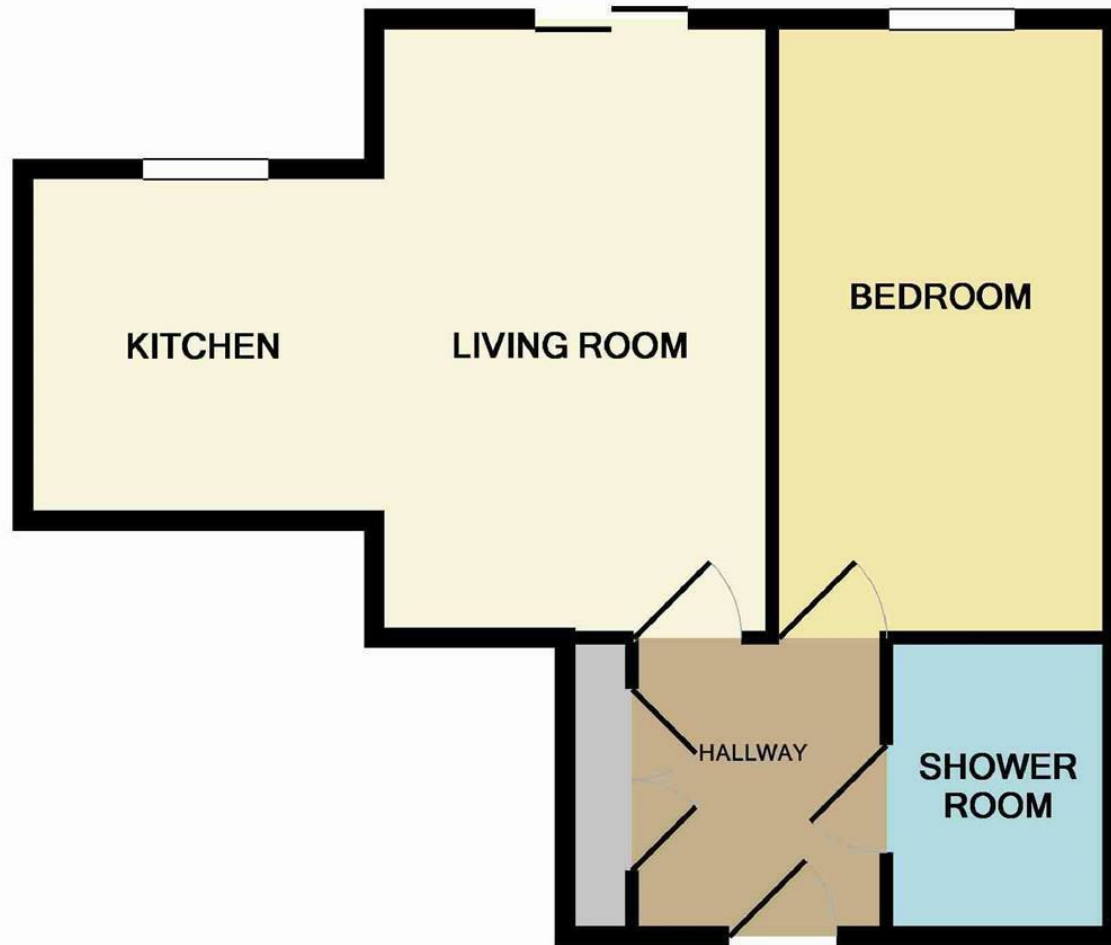
**\*VIDEO/ PHOTO OFFERS NOT ACCEPTED - PLEASE CALL TO BOOK A VIEWING\***

- Available Early August
- 6 MONTHS ONLY
- 1st Floor One Bed - Furnished
- Large Bedroom
- Juliet Balcony
- Council Tax Band B
- EPC Rating C
- Parking
- Sport City Location



Energy Efficiency Rating		
	Current	Potential
Very energy efficient - lower running costs		
(92 plus) <b>A</b>		
(81-91) <b>B</b>		
(69-80) <b>C</b>	<b>76</b>	<b>77</b>
(55-68) <b>D</b>		
(39-54) <b>E</b>		
(21-38) <b>F</b>		
(1-20) <b>G</b>		
Not energy efficient - higher running costs		
<b>England &amp; Wales</b>	EU Directive 2002/91/EC 	





Measurements are approximate. Not to scale. Illustrative purposes only  
Made with Metropix ©2012



These particulars are believed to be accurate but they are not guaranteed and do not form a contract. Neither Jordan Fishwick nor the vendor or lessor accept any responsibility in respect of these particulars, which are not intended to be statements or representations of fact and any intending purchaser or lessee must satisfy himself by inspection or otherwise as to the correctness of each of the statements contained in these particulars. Any floorplans on this brochure are for illustrative purposes only and are not necessarily to scale.

Offices at: Offices at Chorlton, Didsbury, Disley, Hale, Glossop, Macclesfield, Manchester Deansgate, Manchester Whitworth Street, New Mills, Sale, Wilmslow and Withington