



jordan fishwick

3 Chadwick Close, SK9 2GL
Guide Price £249,950

Chadwick Close Wilmslow SK9 2GL

Guide Price £249,950



NO ONWARD CHAIN... A fantastic one bedroom mews property situated on a lovely cul-de-sac among the ever popular Jones Homes 'Villas' development. Inside this light and well proportioned property the accommodation comprises briefly: an entrance hallway, lounge with French doors on to the rear garden, fitted kitchen with space for appliances and to the first floor there is a good size master bedroom and fitted bathroom with a traditional white suite. This charming property is warmed by gas central heating and has double glazing. Private gated access to a good sized garden to the rear laid mainly to lawn, and a driveway to the front offering off road parking. Viewing is highly recommended.



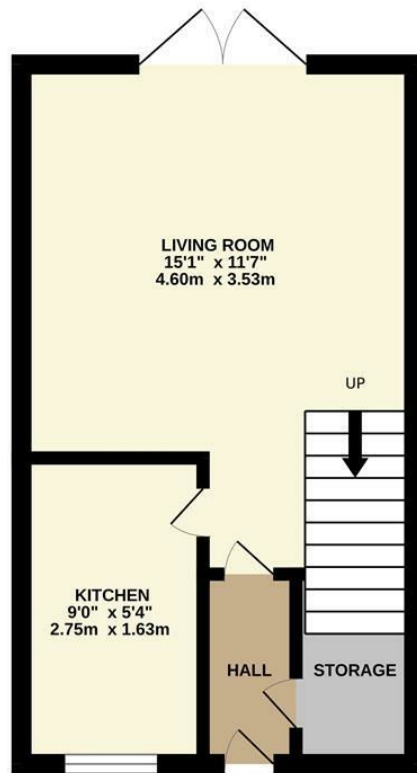


- Mews property
- One bedroom
- Modern Kitchen
- Garden
- Driveway
- No chain
- Gas central heating
- Double glazed

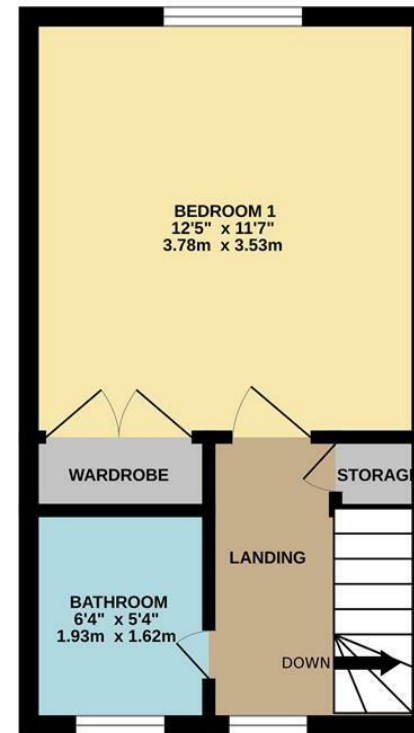


Energy Efficiency Rating		
	Current	Potential
Very energy efficient - lower running costs		
(92 plus) A		
(81-91) B		87
(69-80) C	70	
(55-68) D		
(39-54) E		
(21-38) F		
(1-20) G		
Not energy efficient - higher running costs		
England & Wales	EU Directive 2002/91/EC	

GROUND FLOOR



1ST FLOOR



Measurements are approximate. Not to scale. Illustrative purposes only.
Made with Metropix ©2024



These particulars are believed to be accurate but they are not guaranteed and do not form a contract. Neither Jordan Fishwick nor the vendor or lessor accept any responsibility in respect of these particulars, which are not intended to be statements or representations of fact and any intending purchaser or lessee must satisfy himself by inspection or otherwise as to the correctness of each of the statements contained in these particulars. Any floorplans on this brochure are for illustrative purposes only and are not necessarily to scale.

Offices at: Chorlton, Didsbury, Disley, Hale, Glossop, Macclesfield, Manchester Deansgate, Manchester Whitworth Street, New Mills, Sale, Wilmslow and Withington

36-38 Alderley Road, Wilmslow, Cheshire, SK9 1JX

01625 532000

wilmslow@jordanfishwick.co.uk

www.jordanfishwick.co.uk