



Jordan fishwick

Apt 53 Lancaster House, 71 Whitworth
£1,850 Per Calendar Month



Lancaster House Manchester M1 6LQ

£1,850 Per Calendar Month



The Property

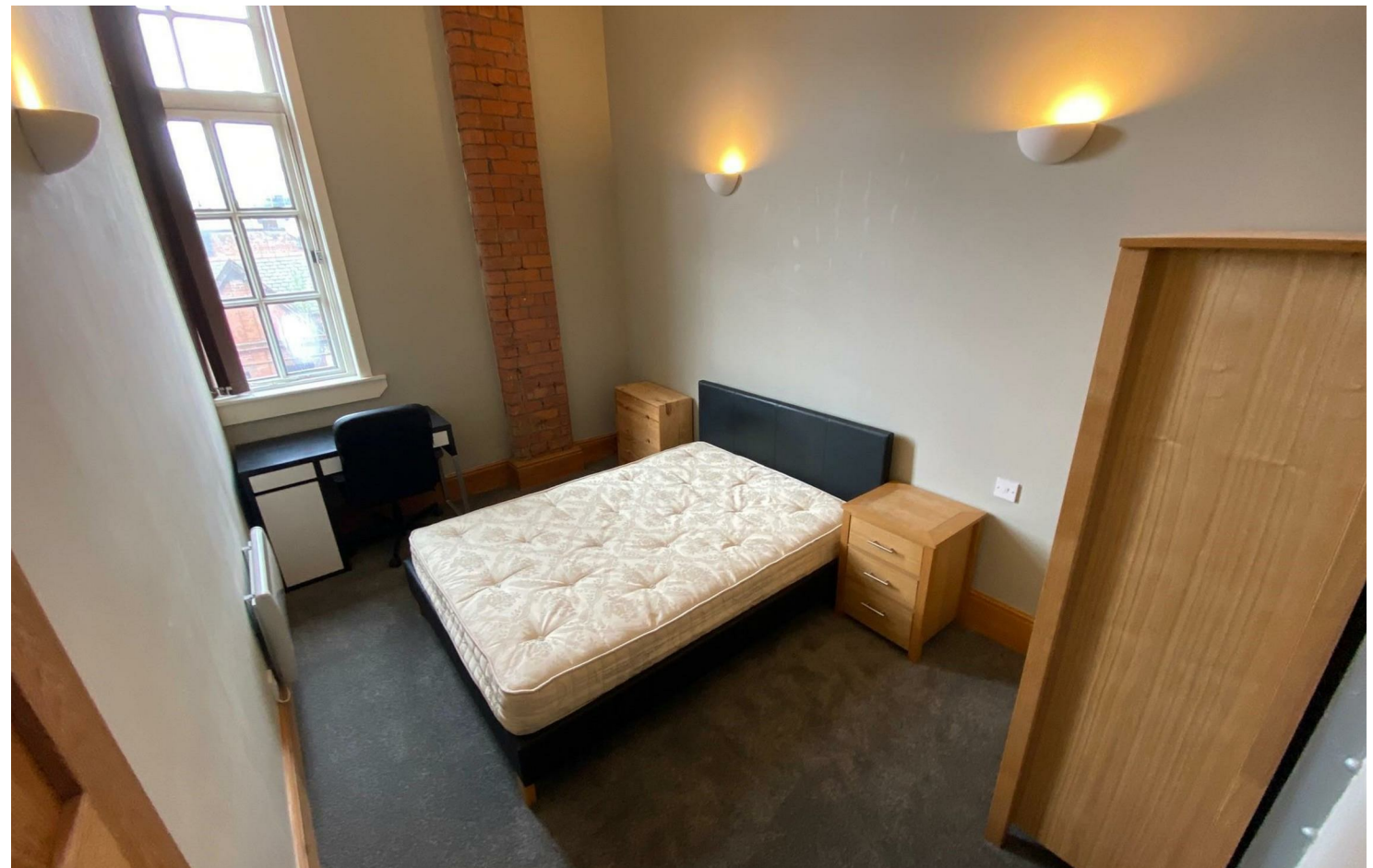
Available Early July. Jordan Fishwick presents this **THREE DOUBLE BEDROOM** apartment in the popular conversion Lancaster House on Whitworth Street West. Close to the universities and Oxford road, this 5th Floor property is finished and furnished to a high standard throughout. The property comprises of tiled hallway leading to stylish and well equipped breakfast kitchen with dishwasher, washer dryer, freestanding fridge freezer and additional integrated fridge. Lounge area with feature windows and additional mezzanine storage level accessed by stairs. Three large double bedrooms and a fabulous large bathroom featuring rain shower and jacuzzi bath. Fully Furnished. Council Tax Band D. EPC Rating D.

VIDEO/ PHOTO OFFERS NOT ACCEPTED - PLEASE CALL TO BOOK A VIEWING

- Available Early July
- THREE Double Bedrooms
- Whitworth Street Location
- Close to Transport links
- Close to Universities
- Tax Band D
- EPC Rating D
- Furnished
- No Parking



Energy Efficiency Rating		
	Current	Potential
Very energy efficient - lower running costs		
(92 plus) A		
(81-91) B		80
(69-80) C		
(55-68) D	63	
(39-54) E		
(21-38) F		
(1-20) G		
Not energy efficient - higher running costs		
England & Wales	EU Directive 2002/91/EC	





These particulars are believed to be accurate but they are not guaranteed and do not form a contract. Neither Jordan Fishwick nor the vendor or lessor accept any responsibility in respect of these particulars, which are not intended to be statements or representations of fact and any intending purchaser or lessee must satisfy himself by inspection or otherwise as to the correctness of each of the statements contained in these particulars. Any floorplans on this brochure are for illustrative purposes only and are not necessarily to scale.

Offices at: Offices at Chorlton, Didsbury, Disley, Hale, Glossop, Macclesfield, Manchester Deansgate, Manchester Whitworth Street, New Mills, Sale, Wilmslow and Withington