



jordan fishwick

ALTRINCHAM
Hawley Lane



Hawley Lane, Altrincham, WA15 0DR

£6,000 PCM



The Property

*** AVAILABLE AUGUST *** Sorrento, Hawley Lane - A beautifully updated and extended four double bedroom family home with a simply exquisite open plan kitchen/dining/living room. Located between Hale & Hale Barns, this four bedroom detached property has been lavishly appointed throughout with no expense spared creating a luxurious home that is securely gated and private to both the front and rear.

The property is arranged over two floors and offers over 2800Sqft of living accommodation: in brief the property comprises: Storm porch, two front facing reception rooms, the lounge with French doors opening to an enclosed fire pit area. A stunning open plan kitchen/diner/living room with bi-fold doors allowing natural light to stream in. Additionally you have a utility room with a separate WC and a single garage.

To the first floor you have four double bedrooms, the master with a beautiful four piece ensuite and a dressing area and a family shower room.

Externally you have self contained annex which comprises a living area with en-suite facilities, ideal for a home office or as a separate dwelling. A private landscaped rear garden and a block paved driveway with parking for five cars. Offered on an unfurnished basis. Call now to view - 0161 929 9797

Directions

WA15 0DR



- Significantly Extended
- Seperate Annexe with Ensuite
- Exquisite Open Plan Kitchen
- Gated Entrance with Parking for Five Cars
- EPC Rating - C
- Council Tax Band G
- Garage

Postcode - WA15 0DR

EPC Rating - C

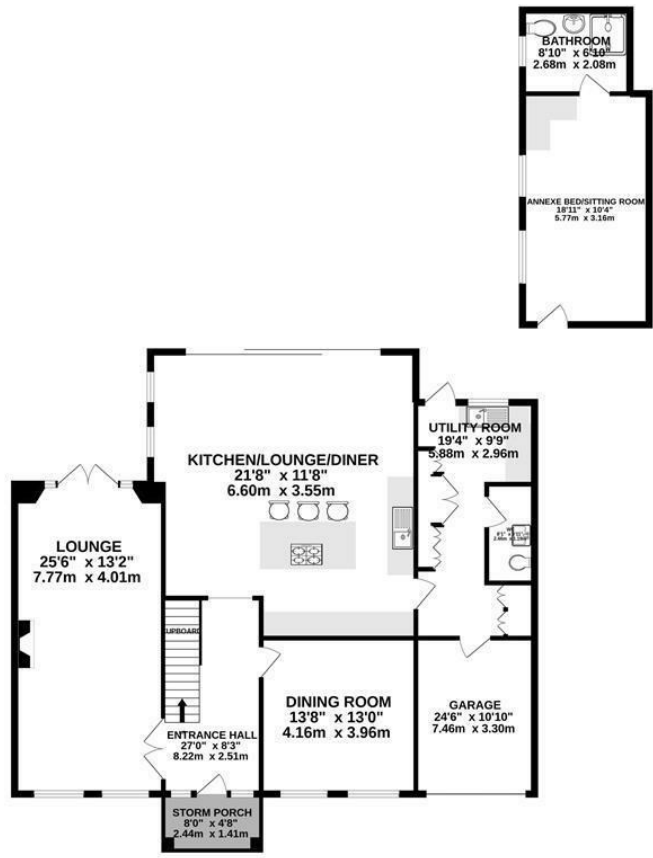
Floor Area - 2815.00 sq ft

Local Authority - Trafford Council

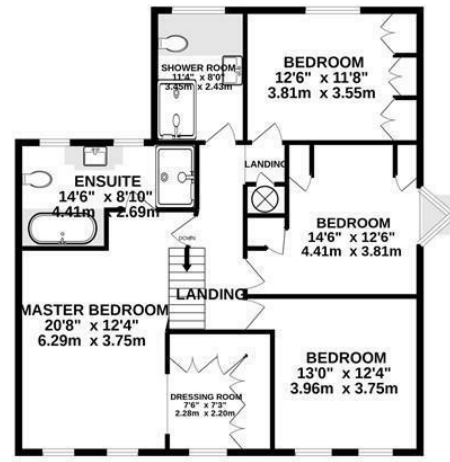
Council Tax - G



GROUND FLOOR



1ST FLOOR



TOTAL FLOOR AREA : 2815sq.ft. (261.5 sq.m.) approx.

Whilst every attempt has been made to ensure the accuracy of the floorplan contained here, measurements of doors, windows, rooms and any other items are approximate and no responsibility is taken for any error, omission or mis-statement. This plan is for illustrative purposes only and should be used as such by any prospective purchaser. The services, systems and appliances shown have not been tested and no guarantee as to their operability or efficiency can be given.
Made with Metropix ©2022



These particulars are believed to be accurate but they are not guaranteed and do not form a contract. Neither Jordan Fishwick nor the vendor or lessor accept any responsibility in respect of these particulars, which are not intended to be statements or representations of fact and any intending purchaser or lessee must satisfy himself by inspection or otherwise as to the correctness of each of the statements contained in these particulars. Any floorplans on this brochure are for illustrative purposes only and are not necessarily to scale.

Offices at: Chorlton, Didsbury, Disley, Hale, Glossop, Macclesfield, Manchester Deansgate, Manchester Whitworth Street, New Mills, Sale, Wilmslow and Withington

0161 929 9797

hale@jordanfishwick.co.uk
www.jordanfishwick.co.uk