



Jordan fishwick

Shanklin Close
Chorlton



Shanklin Close Chorlton M21 9NH

£1,050 Per Calendar Month



The Property

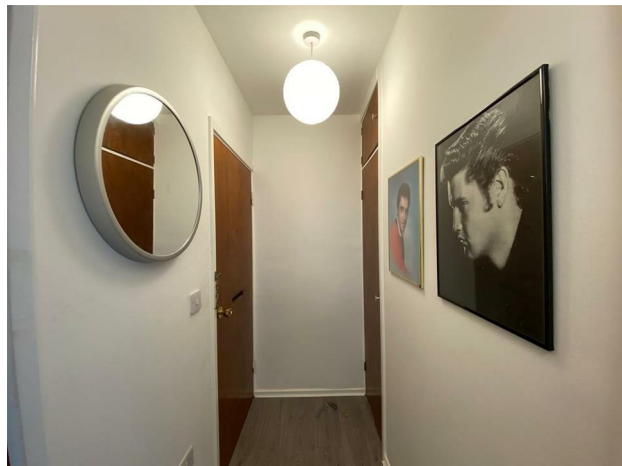
*** AVAILABLE JULY *** Located within a desirable purpose built development just a few minutes walk from both Chorlton Centre and Chorlton Green is this well presented one double bedroom first floor apartment. Benefiting from a private garage and secure off road parking. This splendid property provides spacious and light accommodation throughout, ideal for a young couple or individual and further benefits from views over the well maintained communal gardens. The accommodation briefly comprises: communal entrance hallway with stairs to first floor landing, entrance hall with large fitted storage cupboards, spacious lounge with full height window overlooking the communal gardens, kitchen with fitted units and freestanding appliances, one double bedroom and bathroom, fitted with a three piece suite with over bath shower. Double glazing and electric heating have been installed throughout. Externally there are landscaped communal gardens the garages are located to the rear of the development. An internal viewing is most highly recommended.

***** To arrange a viewing please call 0161 393 7539 *****

Directions

- Council tax Band A - EPC C
- One Bedroom Apartment
- Unfurnished
- Central Chorlton Location
- Close to all amenities and Transport links
- Off road parking and Garage
- Available End of July

Postcode - M21 9NH
EPC Rating - D
Floor Area - sq ft
Local Authority - Manchester
Council Tax - A





These particulars are believed to be accurate but they are not guaranteed and do not form a contract. Neither Jordan Fishwick nor the vendor or lessor accept any responsibility in respect of these particulars, which are not intended to be statements or representations of fact and any intending purchaser or lessee must satisfy himself by inspection or otherwise as to the correctness of each of the statements contained in these particulars. Any floorplans on this brochure are for illustrative purposes only and are not necessarily to scale.

Offices at: Offices at Chorlton, Didsbury, Disley, Hale, Glossop, Macclesfield, Manchester Deansgate, Manchester Whitworth Street, New Mills, Sale, Wilmslow and Withington

410-412 Barlow Moor Road, Chorlton, Manchester, M21
8AD

www.jordanfishwick.co.uk