



*jordan fishwick*

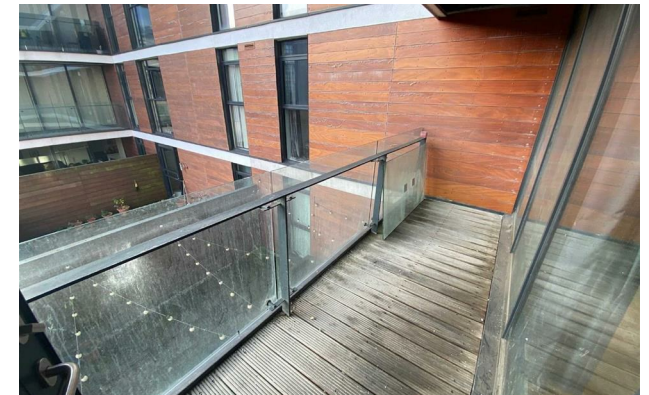
Apt 40 Hill Quays Block A, Jordan Street,  
£1,400 Per Calendar Month





## Hill Quays Block A Manchester M15 4QU

£1,400 Per Calendar Month



### The Property


Available Mid August. This Second floor, large two bedroom, two bathroom apartment on the second floor of this luxury development situated just next to Deansgate Locks. The apartment offers fantastic accommodation throughout with large open plan living area with floor to ceiling windows overlooking a huge decked balcony. The stylish kitchen has integrated appliances (including dishwasher), and there are two large double bedrooms, the master benefitting from an en-suite shower room, and a further large family bathroom. The property is presented fully furnished throughout. EPC Rating C. Tax Band D. No Parking. 12 Month Contracts only.

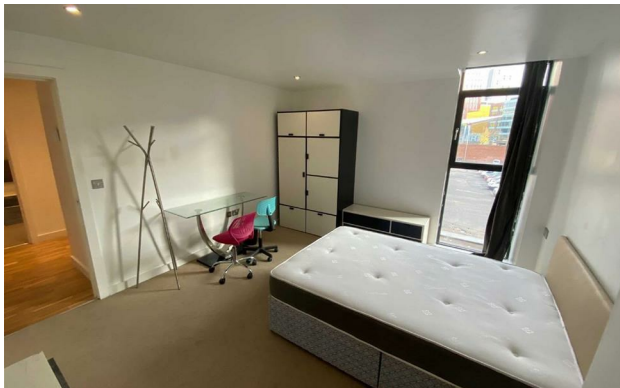
**\*VIDEO/ PHOTO OFFERS NOT ACCEPTED - PLEASE BOOK AN IN PERSON VIEWING\***



- Available Mid August
- Large 2 Bed 2 Bathroom Apartment
- Gym and Sauna on Site for Residents
- Balcony
- Fully Furnished
- Tax Band D
- EPC Rating C
- No Parking
- Concierge on Site



Energy Efficiency Rating		
	Current	Potential
Very energy efficient - lower running costs		
(92 plus) <b>A</b>		
(81-91) <b>B</b>		
(69-80) <b>C</b>	<b>77</b>	<b>84</b>
(55-68) <b>D</b>		
(39-54) <b>E</b>		
(21-38) <b>F</b>		
(1-20) <b>G</b>		
Not energy efficient - higher running costs		
<b>England &amp; Wales</b>	EU Directive 2002/91/EC 	





These particulars are believed to be accurate but they are not guaranteed and do not form a contract. Neither Jordan Fishwick nor the vendor or lessor accept any responsibility in respect of these particulars, which are not intended to be statements or representations of fact and any intending purchaser or lessee must satisfy himself by inspection or otherwise as to the correctness of each of the statements contained in these particulars. Any floorplans on this brochure are for illustrative purposes only and are not necessarily to scale.

Offices at: Offices at Chorlton, Didsbury, Disley, Hale, Glossop, Macclesfield, Manchester Deansgate, Manchester Whitworth Street, New Mills, Sale, Wilmslow and Withington