



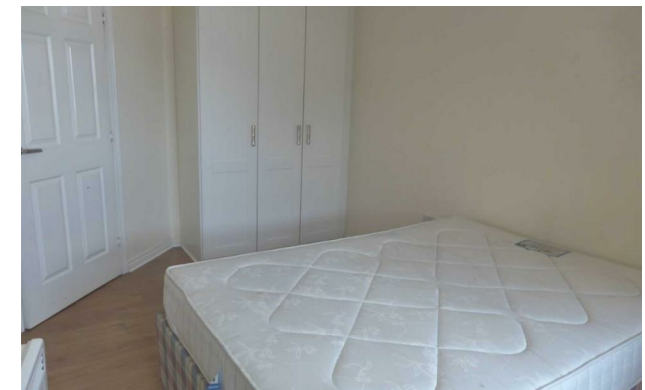
Jordan fishwick

Apt 5 Fusion Core 6, 8 Middlewood Street,
£1,150 Per Calendar Month



Fusion Core 6 Salford M5 4LN

£1,150 Per Calendar Month




The Property

Available Late August. A modern two bedroom 1st floor apartment set within George Wimpey's Fusion development just 15 minutes walk from Manchester City centre. Recently redecorated and improved throughout, the property comprises of entrance hall, leading to living room with access to the modern separate fully integrated kitchen with dishwasher, fridge/freezer and washer/dryer. Stunning bathroom with shower attachment. Two bedrooms with the master having fitted wardrobes. Off the lounge area is a fantastic large paved terrace area. Ideal for those wanting access to the Manchester ring road but within walking distance to the city. Furnished. Secure Parking. 12 month contracts preferred. Tax Band B. EPC Rating B.

VIDEO/PHOTO OFFERS NOT ACCEPTED - PLEASE BOOK AN IN PERSON VIEWING

- Available Late August
- First Floor
- Two Bedroom - Furnished
- Large Terrace
- Tax Band B
- EPC Rating B
- Secure Parking
- Modern Kitchen



Energy Efficiency Rating		
	Current	Potential
Very energy efficient - lower running costs		
(92 plus) A		
(81-91) B	83	83
(69-80) C		
(55-68) D		
(39-54) E		
(21-38) F		
(1-20) G		
Not energy efficient - higher running costs		
England & Wales	EU Directive 2002/91/EC 	





These particulars are believed to be accurate but they are not guaranteed and do not form a contract. Neither Jordan Fishwick nor the vendor or lessor accept any responsibility in respect of these particulars, which are not intended to be statements or representations of fact and any intending purchaser or lessee must satisfy himself by inspection or otherwise as to the correctness of each of the statements contained in these particulars. Any floorplans on this brochure are for illustrative purposes only and are not necessarily to scale.

Offices at: Offices at Chorlton, Didsbury, Disley, Hale, Glossop, Macclesfield, Manchester Deansgate, Manchester Whitworth Street, New Mills, Sale, Wilmslow and Withington