



*jordan fishwick*

WEST DIDSBURY  
Central Road



**Central Road, West  
Didsbury, M20 4ZD**

**Guide Price £230,000**



## The Property

A stylish, two double bedroom, lower ground floor apartment forming part of an attractive Victorian conversion in the heart of West Didsbury, close to the Metrolink and Burton Road with it's array of cafes, restaurants, & independent shops. Presented to a high standard throughout and boasting both gas central heating and uPVC double glazing, the living space in outline comprises: - Private entrance and generous hallway with cloaks space, open plan living / dining kitchen which was recently fitted with integrated appliances and a private sun terrace off, contemporary bathroom with white suite and two double bedrooms, the master with a further private sun terrace. In addition, there is residents parking at the rear of the building.

## Directions

M20 4ZD



- Stylish Victorian conversion
- Two double bedrooms
- Two private terraces
- Ideal West Didsbury location
- Modern fitted kitchen
- Living area with walk-in bay
- Private entrance & generous hallway
- Gas central heating
- uPVC double glazing
- Residents parking

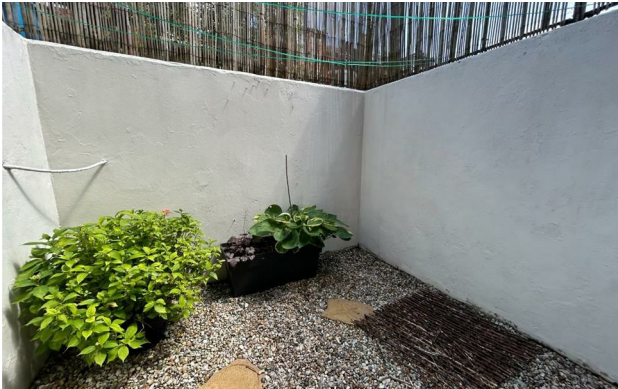
Postcode - M20 4ZD

EPC Rating - C

Floor Area - 603.00 sq ft

Local Authority - Manchester City Council

Council Tax - A



GROUND FLOOR  
603 sq.ft. (56.1 sq.m.) approx.



TOTAL FLOOR AREA : 603 sq.ft. (56.1 sq.m.) approx.  
Measurements are approximate. Not to scale. Illustrative purposes only  
Made with Microplan 92024



These particulars are believed to be accurate but they are not guaranteed and do not form a contract. Neither Jordan Fishwick nor the vendor or lessor accept any responsibility in respect of these particulars, which are not intended to be statements or representations of fact and any intending purchaser or lessee must satisfy himself by inspection or otherwise as to the correctness of each of the statements contained in these particulars. Any floorplans on this brochure are for illustrative purposes only and are not necessarily to scale.

Offices also at: Wilmslow, Macclesfield, Hale, Sale, Chorlton, Glossop, Manchester & Salford

757-759 Wilmslow Road, Didsbury Village, Manchester

0161 445 4480

didsbury@jordanfishwick.co.uk  
www.jordanfishwick.co.uk